

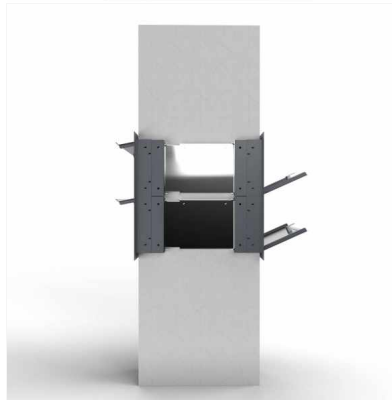


Order number: 215-MDW-4S-390

Manufacturer: Briefkasten Manufaktur Lippe

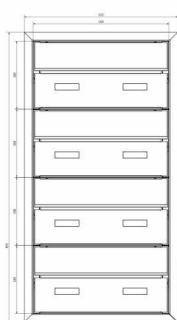
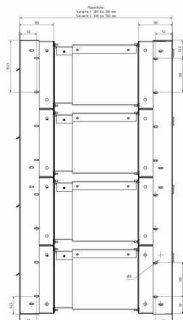
ab **€2,571.00 ***

incl. VAT [plus shipping costs](#) (exclusive of VAT for logged-in users with VAT ID and Non-EU countries)



Unser TIPP

! Flächenbündiges Namensschild - 2-teilig - Trägerblech + Namensschild
Artikel: 789-E-2T (siehe Zubehör)



4-compartment 1x4 design pass-through mailbox GOETHE MDW with nameplate - RAL of your choice

The modern 4-compartment wall pass-through mailbox GOETHE is ideal for the sophisticated entrance area. The linear design makes this mailbox look particularly elegant. Due to the variable shaft length between 300mm to 390mm or 390mm to 560mm, this mailbox can be used in pretty much all masonry.

The dimensions of the individual boxes allow a capacity of approx. 24-44 liters, the large insertion guarantees no crumpled mail even with DIN C4 envelopes and magazines or after several days of absence. Due to the water drainage edge, the mail inside is optimally protected from the weather. The insertion flap is equipped with high-quality axle dampers, so quiet closing is guaranteed and there is no annoying rattling due to weather influences. The exchangeable name plates made of Plexiglas can be operated comfortably from the front, for an optimal optic we recommend the flush name plate with laser engraving (see accessories). The 2nd nameplate is equipped with the insert advertising Yes/No.

The letterboxes of the GOETHE collection are characterized by the consistent use of stainless steel. The result is a very high durability and sustainability. The design has been developed by our own engineers with a view to high flexibility or modularity, easy spare parts assembly and uncomplicated self-assembly. Spare parts for all GOETHE systems are directly available in our store. Thanks to the design, self-assembly is uncomplicated.

Protected utility model according to DPMA file number DE: 20 2021 101 679.5

- High-quality 4-fach pass-through mailbox completely made of stainless steel.
- Shaft made of stainless steel 1.4016 (non-rusting magnetic stainless steel), bright.
- Body made of stainless steel 1.4016 (non-rusting magnetic stainless steel), powder coated in RAL of your choice.
- Quality production - Made in Germany by Briefkasten Manufaktur Lippe.
- The mailboxes comply with DIN/EN 13724. Insert size (3.5 cm x 36.0 cm) for C4 landscape, here fit even large letters without bending.
- Letterboxes & removal doors made of stainless steel V2A 1.4301, powder coated in RAL of your choice.
- Letter insertion and removal are from the front. Insertion flap with high-quality axle dampers for very quiet insertion of the mail.
- Removal doors open from top to bottom. This prevents the mail from falling towards you.
- Name plates made of Plexiglas for name inscription and 2nd name plate advertising Yes/No per party.
- Plaster cover frame made of stainless steel angle profile 25 x 58 mm, powder coated in RAL color.
- Variable shaft length 300-390mm or 390-560mm. Outer dimensions letter chute W 380mm x H 180mm.
- Outer dimensions front W 450mm x H 850mm; rear W 450mm x H 850mm.

Important information:

In order to achieve optimum water protection for your mail, the mailbox or mailbox system should be located under a canopy if possible.

Mail is only protected from water when it is completely inserted in the box and the insertion flap is closed. Mail that is not completely inserted allows moisture and dirt to enter the mailbox. This system is protected against water ingress in accordance with DIN EN 13724. Water ingress is not a reason for complaint.

Abmessungen & Details

Number of parties:	4
Item withdrawal:	Back
Base material:	Stainless steel
Height single box in cm:	20,0
Width single box in cm:	40,0
Volume single box in liters:	24,0 - 32,0 32,0 - 44,0
Height letter slot in cm:	3,5
Width letter slot in cm:	36,0
Height letterbox system in cm:	85,0
Width letterbox system in cm:	45,0
Total width in cm:	45,0
Depth in cm:	30,0 - 39,0 39,0 - 56,0
Weight in kg:	43,0
Delivery condition:	Delivery is partially disassembled
Shipping information:	Depending on the order volume, delivery is made by parcel shipment or bulky goods shipment. Partial deliveries are possible for products that can be disassembled (e.g., for floor-standing mailboxes, the stand & box can be shipped separately).