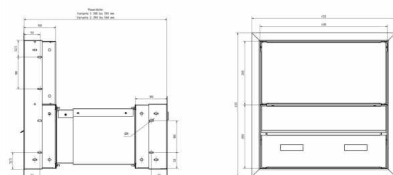
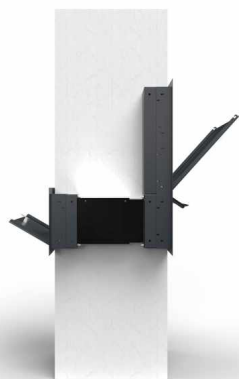


Order number: 215-MDW-1-SP-KSCSWIFI-390

Manufacturer: Briefkasten Manufaktur Lippe

ab **€1,302.00 ***

incl. VAT [plus shipping costs](#) (exclusive of VAT for logged-in users
with VAT ID and Non-EU countries)



Design pass-through mailbox GOETHE MDW - RAL of your choice - COMELIT Switch - VIDEO Complete kit

The modern wall pass-through mailbox GOETHE with bell intercom box is ideal for the demanding entrance area. The linear design makes this mailbox look particularly elegant. Due to the variable shaft length between 300mm to 390mm or 390mm to 560mm, this mailbox can be used in pretty much all brickwork. Integrated Comelit VIDEO Complete kit Wifi. The Comelit video intercom is an innovative solution with features such as facial recognition, voice commands and app operation using your smartphone. Completely pre-programmed for easy installation - connect 2 wires and DONE! Optionally with gateway without home station or with WiFi home station. The dimensions of the individual boxes allow a capacity of approx. 24-44 liters, the large insertion guarantees no crumpled mail even with DIN C4 envelopes and magazines or after several days of absence. Due to the water drainage edge, the mail inside is optimally protected from the weather. The insertion flap is equipped with high-quality axle dampers, so quiet closing is guaranteed and there is no annoying rattling due to weather influences.

The letterboxes of the GOETHE collection are characterized by the consistent use of stainless steel. The result is a very high durability and sustainability. The design has been developed by our own engineers with a view to high flexibility or modularity, easy spare parts assembly and uncomplicated self-assembly. Spare parts for all GOETHE systems are directly available in our store.

Thanks to the design, self-assembly is uncomplicated.

Protected utility model according to DPMA file number DE: 20 2021 101 679.5

- High-quality pass-through mailbox completely made of stainless steel.
- Shaft made of stainless steel 1.4016 (non-rusting magnetic stainless steel), bright.
- Body made of stainless steel 1.4016 (non-rusting magnetic stainless steel), powder-coated in RAL of your choice.
- Quality manufacturing - Made in Germany by Briefkasten Manufaktur Lippe.
- The mailbox complies with DIN/EN 13724. Insertion size (3.5 cm x 36.0 cm) for C4 landscape, here fit even large letters without bending.
- Letter slot & removal door made of stainless steel V2A 1.4301, powder coated in RAL of your choice.
- Letter insertion and removal are from the front. Insertion flap with high-quality axle dampers for very quiet insertion of the mail.
- Removal door can be opened from top to bottom. This prevents the mail from falling towards you.
- Function box (BH 400x200mm) made of stainless steel 1.4016 (non-rusting magnetic stainless steel), powder coated in RAL of your choice.
- 8-12V DC short-stroke bell pushbutton with LED ring illumination white.
- Optionally with name inscription approx. 10-20mm high.
- Optionally with house number inscription approx. 60-80mm high.
- Plaster cover frame made of stainless steel angle profile 25 x 58 mm, powder coated in RAL color.
- Variable shaft length 300-390mm or 390-560mm. Outer dimensions letter chute W 380mm x H 180mm.
- External dimensions front W 450mm x H 450mm; rear W 450mm x H 250mm.

Important information:

Camera or intercom preparation

Intercom systems must be connected by an electrician. Contact your trusted electrician for planning, mounting and installation.

Water protection

In order to achieve optimum water protection for your mail, the mailbox or mailbox system should, if possible, be located under a canopy. Mail is only protected from water when it is completely inserted in the box and the insertion flap is closed. Mail that is not completely inserted allows moisture and dirt to enter the mailbox. This system is protected against water ingress in accordance with DIN EN 13724. Water ingress is not a reason for complaint.

Abmessungen & Details

Number of parties:	1
Item withdrawal:	Back
Base material:	Stainless steel
Height single box in cm:	20,0
Width single box in cm:	40,0
Volume single box in liters:	24,0 - 32,0 32,0 - 44,0
Height letter slot in cm:	3,5
Width letter slot in cm:	36,0
Overall height in cm:	recommended 140.0 - 160.0
Total width in cm:	45,0
Depth in cm:	BK 30,0 - 39,0 BK 39,0 - 56,0 FK 10,0
Weight in kg:	21,0
Delivery condition:	Delivery is partially disassembled
Shipping information:	Depending on the order volume, delivery is made by parcel shipment or bulky goods shipment. Partial deliveries are possible for products that can be disassembled (e.g., for floor-standing mailboxes, the stand & box can be shipped separately).