



Order number: 215-STQ-2S-400

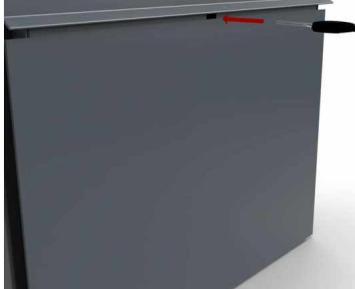
Manufacturer: Briefkasten Manufaktur Lippe

ab **€1,783.00 ***

incl. VAT [plus shipping costs](#) (exclusive of VAT for logged-in users with VAT ID and Non-EU countries)



Push-Key-Schloss
Nur noch stecken!

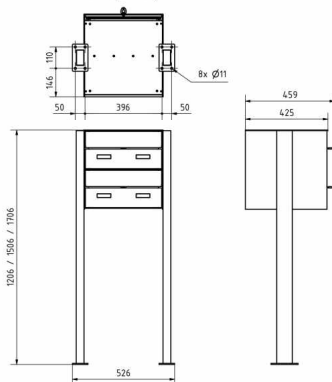


Unser TIPP

! Flächenbündiges Namensschild - 2-teilig - Trägerblech + Namensschild
Artikel: 789-E-2T (siehe Zubehör)



Montagebohrung



2-compartment 1x2 Design free-standing letterbox GOETHE ST-Q - RAL of your choice

Free-standing 2-part mailbox system with horizontal boxes in 400mm depth and elegant rectangular stand elements. The modern letterbox GOETHE is ideal for the demanding entrance area. The linear design without a visible lock makes this mailbox look particularly elegant.

The dimensions of the individual boxes allow a capacity of approx. 32 liters, the large insertion guarantees no crumpled mail even with DIN C4 envelopes and magazines or after several days of absence. The innovative push-key lock is invisibly hidden inside the mailbox. The key is simply inserted into the existing opening (no turning required) and the door opens. With the arrangement of the lock, this mailbox is designed so that the removal door prevents mail from falling towards you. Due to the water drainage edge, the mail inside is optimally protected from the weather. The insertion flap is equipped with high-quality axle dampers, so quiet closing is guaranteed and there is no annoying rattling due to weather influences. The exchangeable name plates made of Plexiglas can be operated comfortably from the front, for an optimal optic we recommend the flush name plate with laser engraving (see accessories). The 2nd nameplate is equipped with the insert advertising Yes/No.

The letterboxes of the GOETHE collection are characterized by the consistent use of stainless steel and aluminum. The result is very high durability and sustainability. The design has been developed by our own engineers with a view to high flexibility or modularity, easy spare parts assembly and uncomplicated self-assembly. Spare parts for all GOETHE systems are directly available in our store. Thanks to the design, self-assembly is uncomplicated.

Protected utility model according to DPMA file number DE: 20 2021 101 679.5

- 2-compartment free-standing letterbox made of stainless steel and aluminum.
- Mailboxes made of stainless steel 1.4016 (non-rusting magnetic stainless steel), powder-coated in RAL of your choice.
- Quality manufacturing - Made in Germany by Briefkasten Manufaktur Lippe.
- Innovative push-key lock with 2 keys per party.
- Letter insertion and removal from the front. Insertion flap with high-quality axle dampers for very quiet insertion of mail.
- The mailboxes comply with DIN/EN 13724. Insertion size (3.5 cm x 36.0 cm) for C4 crosswise, large letters also fit in here without bending.
- Removal doors open from top to bottom. So the mail can not fall against you.
- Name plate made of Plexiglas for name inscription and 2nd name plate advertising Yes/No per party.
- Optimal rain protection due to rain protection edges and a rain canopy made of 3mm aluminum AlMg3 W19, powder coated in RAL of your choice.
- Side panel made of 3mm aluminum AlMg3 W19, powder coated in RAL of your choice.
- Back panel made of 1mm stainless steel V2A 1.4301, powder coated in RAL of your choice.
- The W 40 mm x D 80 mm stand columns are made of 2mm stainless steel V2A 1.4301, powder coated in RAL color for setting in concrete or screw mounting.

Important information:

In order to achieve optimum water protection for your mail, the mailbox or mailbox system should, if possible, be located under a canopy.

Mail is only protected from water when it is completely deposited in the box and the insertion flap is closed. Mail that is not completely inserted allows moisture and dirt to enter the mailbox. This system is protected against water ingress in accordance with DIN EN 13724. Water ingress is not a reason for complaint.

Abmessungen & Details

Number of parties:	2
Item withdrawal:	Front
Base material:	Stainless steel, Aluminum
Height single box in cm:	20,0
Width single box in cm:	40,0
Volume single box in liters:	32,0
Height letter slot in cm:	3,5
Width letter slot in cm:	36,0
Height letterbox system in cm:	40,0
Width letterbox system in cm:	40,0
Overall height in cm:	120,0 150,0 170,0
Total width in cm:	48,8
Depth in cm:	40,0 + 2,5 Regendach
Weight in kg:	38,0
Delivery condition:	Delivery is made in blocks, stand elements / letterbox divided
Shipping information:	Depending on the order volume, delivery is made by parcel shipment or bulky goods shipment. Partial deliveries are possible for products that can be disassembled (e.g., for floor-standing mailboxes, the stand & box can be shipped separately).