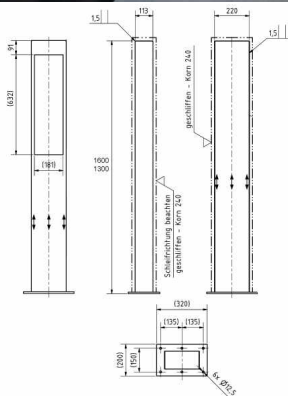
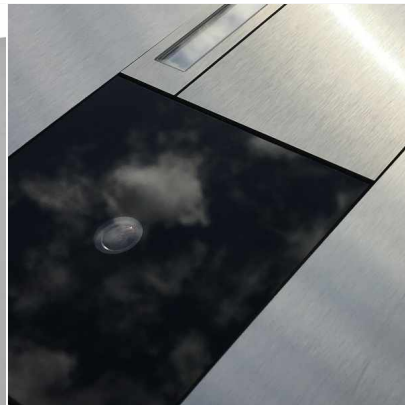


Order number: 870-VA-V-GI106-160

Manufacturer: Briefkasten Manufaktur Lippe

ab **€1,690.00 ***

incl. VAT [plus shipping costs](#) (exclusive of VAT for logged-in users with VAT ID and Non-EU countries)



Stainless steel bell pillar designer - GIRA System 106 - 5-fach prepared

High-quality manufactured bell pillar of the brand Briefkasten Manufaktur. The Gira System 106 can be used seamlessly in flush design. The preparation is intended for 5 pieces GIRA 106 system modules. The modules can be used flush with the surface thanks to the simple holding system (surface-mounted housing 5505910 required!).

This is a real eye-catcher among the technology pedestals. Clear lines and no-frills design characterize the designer collection with GIRA System 106. Our products have a high value, reliable functionality and their own identity. Made by Mailbox Manufaktur.

- Bell pillar made of 1.5 mm stainless steel V2A 1.4301, 240 grain ground.
- The speaking part is made of 2mm stainless steel V2A 1.4301, 240 grain ground. Dimensions: W 190 mm x H 640 mm x D 110 mm.
- Incl. 6x screws cover caps made of stainless steel V2A, ground, so that the screws for fixing the front panel are not visible. See pictures.
- The fully welded column is made of 1.5mm stainless steel V2A 1.4301, ground. Construction height is either 1.30 m or 1.60 m.
- The pillar is equipped with a base plate made of VA. This is 10 mm thick and is finished with a cover plate. See pictures.
- Invisible cable feed through the body possible.

• **WITHOUT GIRA system components!**

Important information

Camera or intercom preparation

Intercom systems must be connected by an electrician. Please contact your trusted electrician for planning, installation and wiring.

Water protection

In order to achieve optimum water protection for your mail, the mailbox or mailbox system should, if possible, be located under a canopy.

Mail is only protected from water when it is completely inserted in the box and the insertion flap is closed. Mail that is not completely inserted allows moisture and dirt to enter the mailbox. Therefore, it is necessary to plan sufficiently sized mailboxes for the upcoming needs. In certain extreme weather conditions, water can still enter (according to DIN EN 13724 up to 1ccm). This is not a reason for complaint.

Abmessungen & Details

Base material: Stainless steel

Height single box in cm: 64,0

Width single box in cm: 19,0

Overall height in cm: 130,0 | 160,0

Total width in cm: 22.0 (footplate 32.0)

Depth in cm: 11.0 (footplate 21.0)

Weight in kg: 40,0

Delivery condition: Delivery is assembled

Shipping information: Delivery by forwarding agent on one-way pallet. Before delivery, the forwarding agent will contact you by phone to arrange the date.