

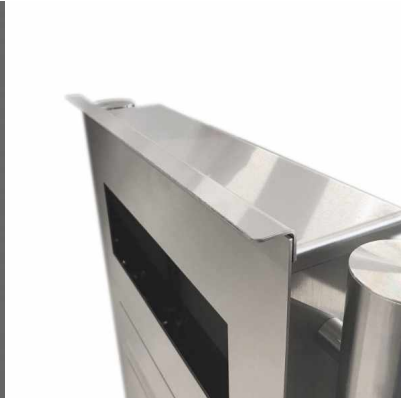
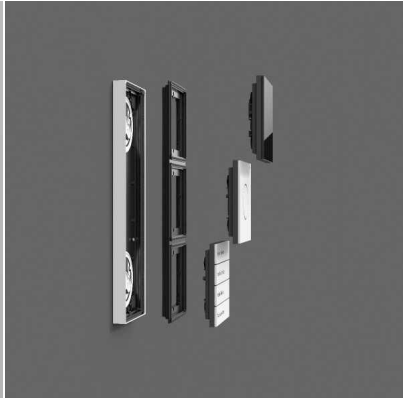
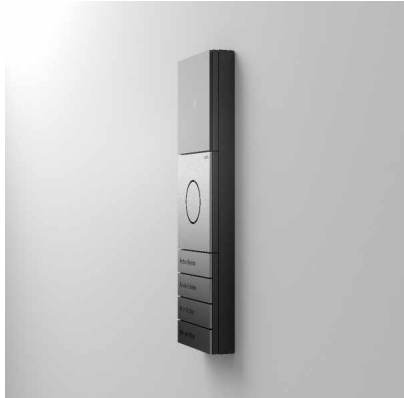
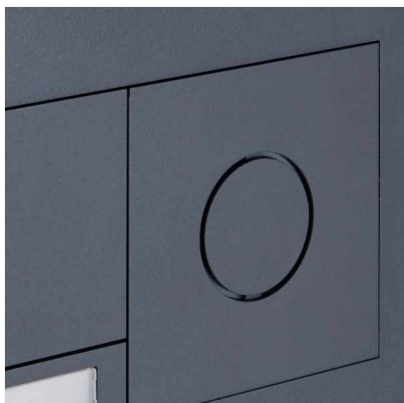


Order number: 325B-R-KSVG1106-7016

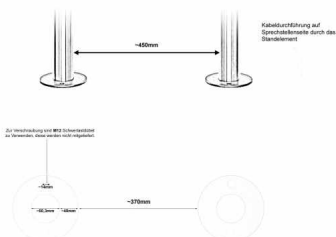
Manufacturer: Briefkasten Manufaktur Lippe

ab **€4,750.00 ***

incl. VAT [plus shipping costs](#) (exclusive of VAT for logged-in users
with VAT ID and Non-EU countries)



Alle Angaben unter Vorbehalt von technischen Änderungen in mm. Maßtoleranzen möglich +/- 2mm.



Regendach "DESIGNER"

Für Aufputz-, Zaun- und Standbriefkästen der Kollektion
Designer liegt ein Regendach bei. Dieses ist selbstklebend und
nach erfolgreicher Montage oben auf dem Briefkasten
aufzusetzen. Achten Sie dabei auf eine genaue Ausrichtung!



Stainless steel free-standing letterbox Designer BIG - RAL at choice - GIRA System 106 - VIDEO complete set

High-quality manufactured free-standing letterbox of the brand letterbox manufacture in extra large format. Seamlessly integrated Gira System 106 in flush design. 3 GIRA system modules are included, so the letterbox can be used directly. The matching GIRA home station and the control unit to complete this letterbox are included. The modules can be subsequently replaced as desired due to the simple holding system.

This is a real eye-catcher among the letterboxes. Clear lines and no-frills design characterize the designer mailbox with GIRA System 106. Our products have a high value, reliable functionality and their own identity. Made by Briefkasten Manufaktur.

- Stainless steel free-standing letterbox made of 2 mm stainless steel V2A. Front panel, powder coated according to RAL color.
- Front mail removal door 320 mm x 300 mm, to open from top to bottom. Incl. 2 keys with key number.
- Mail slot from front, dimensions of slot: W 32 cm x H 6.3 cm, C4 landscape. Very large letters fit in here without bending.
- **From now on with built-in damping elements, these let the insertion flap close slowly and quietly.**
- Nameplate made of stainless steel, powder coated. Your name is optionally lasered on the nameplate.
- Optionally with house number, lasered.
- Incl. GIRA home station & control unit enclosed, System 106 door station module, info module & camera module installed.
- The pedestals are made of 60.3 mm stainless steel V2A 1.4301, ground. Invisible cable routing through the pillars.

GIRA

Camera module Gira System 106 - 5561 000, installed without cabling

- A high-quality camera with high light sensitivity is concealed behind the replaceable black glass pane. Thanks to a detection angle of 100°, the user is always in the picture about what is happening outside his front door.

Info module Gira System 106 - 5560 920, installed

- For house numbers that need to be clearly visible.

Door station module Gira System 106 - 5565 920, installed without wiring

- Compact voice module with integrated call button for communication between inside and outside.
- A high-quality microphone and a weatherproof loudspeaker ensure good communication.
- Power supply via 2-wire bus. Additional connection for ZV (e.g. necessary from 3rd camera module).
- All other System 106 modules (except voice module) are supplied with voltage via the door station module.

Home station Gira video surface-mounted 7 1209xx, enclosed

- Video home station with a 17.78 cm (7") TFT color display and convenient hands-free function for surface mounting or wall mounting with flush-mounted device box or cavity wall box. With the optional stand (see accessories) also suitable for placement on furniture. A 32 GB SD memory card is included for internal image storage. Full-surface glass front with touch functionality and tactile feedback.

• [Further information](#)

Control device video REG Gira 128800, enclosed

- Control device for supplying the audio and video components of the Gira door communication bus.
- Supply of the reverse polarity protected and short-circuit proof 2-wire bus when using video components such as color camera, TFT color display.
- Up to 2 door stations with color camera and 28 home stations with TFT color display can be supplied via the video control device.
- A total of up to 15 color cameras can be controlled by the video control device (5 door stations video and 10 TKS camera gateways), of which two door stations with color camera can be supplied with voltage by the video control device. The other color cameras must each be operated with their own power supply for door communication.
- Self-resetting electronic short-circuit and overload detection of the operating voltages and the bus connection.
- Buttons for system and door opener programming.
- LED status indicators for operation, overload, system programming and door strike programming.
- AC 12 V output for powering a standard electric strike.
- Relay output for switching a door opener with its own power supply.
- Door opener switching time continuously adjustable from 1 to 10 s.

• [Further information](#)

Important information

Camera or intercom preparation

The intercom systems must be connected by an electrician. Please contact your local electrician for planning, installation and wiring.

Water protection

To achieve optimum water protection for your mail, the mailbox or mailbox system should be located under a canopy if possible.

Mail is only protected from water when it is completely inserted in the box and the insertion flap is closed. Mail that is not completely inserted allows moisture and dirt to enter the mailbox. Therefore, it is necessary to plan sufficiently sized mailboxes for the upcoming needs. In certain extreme weather conditions, water can still enter (according to DIN EN 13724 up to 1ccm).

This is not a reason for complaint.

Abmessungen & Details

| | |
|------------------------------|--|
| Number of parties: | 1 |
| Item withdrawal: | Front |
| Base material: | Stainless steel |
| Connection technology: | 2-wire bus technology |
| Height single box in cm: | 71,0 75,0 |
| Width single box in cm: | 41,0 45,0 |
| Volume single box in liters: | 21,0 |
| Height letter slot in cm: | 6,3 |
| Width letter slot in cm: | 32,0 |
| Overall height in cm: | 150,0 |
| Total width in cm: | 57,0 |
| Depth in cm: | 10,0 |
| Weight in kg: | 35,0 |
| Delivery condition: | Delivery is made in blocks, stand elements / letterbox divided |
| Shipping information: | Depending on the order volume, delivery is made by parcel shipment or bulky goods shipment. Partial deliveries are possible for products that can be disassembled (e.g., for floor-standing mailboxes, the stand & box can be shipped separately). |