



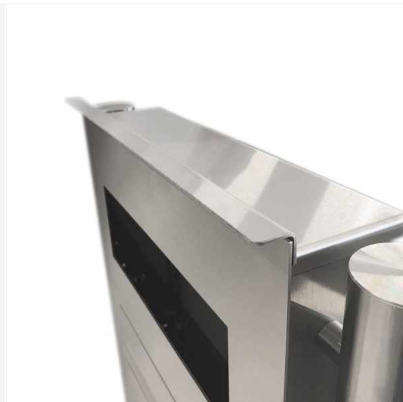
Order number: 592D-B-R-ST-R

Note: After your order, you will receive a design drawing by email as a PDF to realize your wishes even to the last detail. Here, your wishes will be addressed in detail.

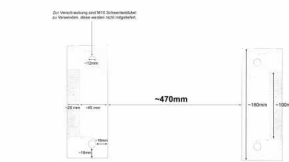
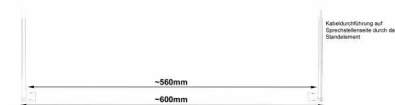
Manufacturer: Briefkasten Manufaktur Lippe

ab **€1,660.00 ***

incl. VAT [plus shipping costs](#) (exclusive of VAT for logged-in users with VAT ID and Non-EU countries)



Alle Angaben unter Vorbehalt von technischen Änderungen in mm. Maßtoleranzen möglich +/- 2mm.



Regendach "DESIGNER"

Für Aufputz-, Zaun-, und Standbriefkästen der Kollektion Designer liegt ein Regendach bei. Dieses ist selbstklebend und nach erfolgreicher Montage oben auf dem Briefkasten aufzusetzen. Achten Sie dabei auf eine genaue Ausrichtung!



Eingebaute Dämpfungselemente lassen die Einwurfklappe langsam und leise schließen

Stainless steel letterbox designer model BIG ST-P - lateral - RAL of your choice - INDIVIDUAL

High quality mailbox free-standing the brand mailbox manufactory with powder-coated front panel in RAL color. A real eye-catcher among the mailboxes. Clear line and straightforward design characterize the designer mailbox free-standing. With a lot of volume for very large amounts of posts.

in the Edition ST-P with a flush design. The elegant rectangular standstill pillars are made of 2 mm stainless steel V2A 1.4301, sanded and optionally equipped with a 10mm thick fuzeplatte for screw mounting.

Our products have a high value, reliable functionality and their own identity. Made by mailbox manufactory.

- Designer stainless steel mailbox free-standing made of 2mm stainless steel V2A 1.4301, front panel powder-coated in RAL color; Dimensions single box: height 550 mm; Width: 600 mm; Depth 100 mm.

- Fronts side post-withdrawal door 350 mm x 300 mm, to open from top to bottom. Including 2 key with key number.

- Settling from the front, dimensions of the insertion: W 35 cm x H 6.3 cm, C4 across. Very large letters fit here without kinking.

Attention no withdrawal protection!

- With built-in damping elements, which let the throw-in flap slowly and quietly close.

- Optionally interchangeable name tag made of stainless steel with laser lettering or name tag made of plexi.

- 8-12V DC Kurzhub bell button with LED ring lighting (blue, white, red or green). The lighting of the bell button cannot be supplied by the control unit. It must be connected to an additional power supply 8-12 V DC.

- Optional is an 8-12V DC short-lived light button with pictogram.

- Preparation (installation speaker not included) for intercom.

- Optional with universal adapter for all commercially available installation speakers.

- Optional preparation (not included in the scope of delivery) for a camera.

- Optional with house number in polished optics (67mm high), offset or house number approx. 70mm high (max. 3-digit) with power-saving LED lighting 12V DC approx. 50mA / 1W, white.

- The W 20 mm x D 100 mm stand columns consist of 2mm stainless steel V2A 1.4301, powder-coated in RAL color for concreting or screw mounting. Invisible cable routing through the stand columns.

Important information

Camera or voice center preparation

We always recommend the electrical installation to be carried out by an electrical installer.

We offer the preparation of cameras & speakers from different manufacturers for our mailboxes. The preparation does not contain any end devices, which are the provision of the screw recordings, bores and perforations. So that you can easily install your device.

Water protection

In order to achieve optimal water protection of your post, the mailbox or the mailbox system should be under a canopy if possible. If you set up this system completely freely, it is recommended to use a rain roof. Connected self-adhesive rain roof included.

The post office is only protected from water if it is completely stored in the box and the throw-in flap is closed. Unskinned mail enables the penetration of moisture and dirt into the mailbox. It is therefore necessary to plan sufficiently dimensioned mailboxes for the upcoming need. In certain extreme weather conditions, water can still occur (according to DIN EN 13724 to 1ccm). This is not a reason for complaint.

Abmessungen & Details

Number of parties:	1
Item withdrawal:	Front
Base material:	Stainless steel
Height single box in cm:	51,0 55,0
Width single box in cm:	56,0 60,0
Volume single box in liters:	21,0
Height letter slot in cm:	6,3
Width letter slot in cm:	35,0
Overall height in cm:	140,0 160,0
Total width in cm:	60,0
Depth in cm:	10,0
Weight in kg:	40,0
Delivery condition:	Delivery is made in blocks, stand elements / letterbox divided
Shipping information:	Depending on the order volume, delivery is made by parcel shipment or bulky goods shipment. Partial deliveries are possible for products that can be disassembled (e.g., for floor-standing mailboxes, the stand & box can be shipped separately).