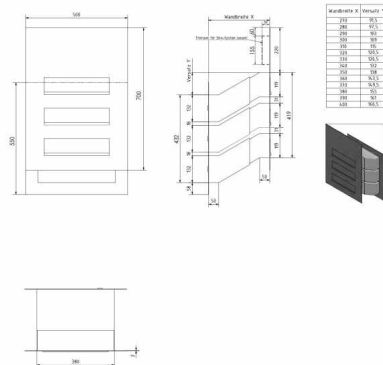
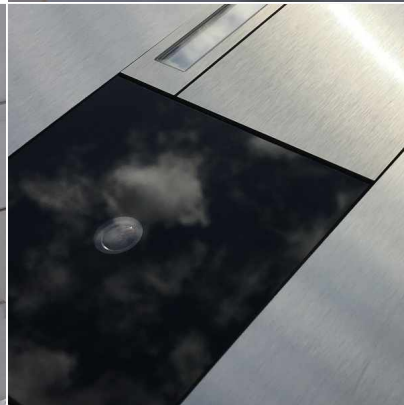
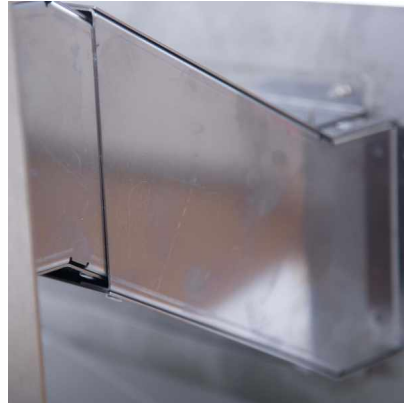
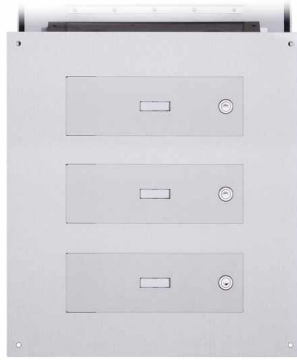


Order number: 515DW-3-V-GI106

Manufacturer: Briefkasten Manufaktur Lippe

ab **€1,489.00 ***

incl. VAT [plus shipping costs](#) (exclusive of VAT for logged-in users with VAT ID and Non-EU countries)



3-compartment Stainless steel wall pass-through letterbox designer model - GIRA System 106 - 3-fach prepared

High-quality manufactured pass-through letterbox of the brand Briefkasten Manufaktur. Due to the variable shaft length between 270mm to 400mm, this mailbox can be used in pretty much all masonry. The mail removal takes place on the back. The front and rear stainless steel plates made of 2mm stainless steel V2A, ground are fixed with screws to the wall (caps included).

The Gira System 106 can be used seamlessly in flush design. The preparation is intended for 3 pieces GIRA 106 system modules. The modules can be used flush with the surface thanks to the simple holding system (surface-mounted housing 5503910 required!). This is a real eye-catcher among the letterboxes. Clear lines and no-frills design characterize the designer letterbox with GIRA System 106. Our products have a high value, reliable functionality and their own identity. Made by Briefkasten Manufaktur.

- 3-compartment Designer stainless steel pass-through mailbox made of 2 mm stainless steel V2A, 1.4301 240 grain ground.
- Rear mail removal door 300x100mm, to open from left to right.
- Stainless steel cylinder lock with dust cover & 2 keys with key number per party.
- Replaceable anti-vandalism nameplates made of plexiglass incl. tools - The nameplate is dent-proof and impact-resistant, the plastic is flame-retardant.
- Mail slot from the front, dimensions slot: W 32 cm x H 3.5 cm, C4 landscape. Very large letters fit in here without bending. Attention no removal protection!
- Dimension front panel W 500mm x H 700mm.
- Dimension cover plate with removal door W 500mm x H 550mm.
- Dimension letter chute W 380mm x H 210-280mm.
- Variable shaft length 270-400mm.
- WITHOUT GIRA system components!

Important information

Camera or intercom preparation

Intercom systems must be connected by an electrician. Contact your trusted electrician for planning, mounting and installation.

Water protection

In order to achieve optimum water protection for your mail, the mailbox or mailbox system should, if possible, be located under a canopy.

Mail is only protected from water when it is completely inserted in the box and the insertion flap is closed. Mail that is not completely inserted allows moisture and dirt to enter the mailbox. Therefore, it is necessary to plan sufficiently sized mailboxes for the upcoming needs. In certain extreme weather conditions, water can still enter (according to DIN EN 13724 up to 1ccm). This is not a reason for complaint.

Abmessungen & Details

Number of parties:	3
Item withdrawal:	Back
Base material:	Stainless steel
Volume single box in liters:	21,0 - 31,0
Height letter slot in cm:	3,5
Width letter slot in cm:	32,0
Depth in cm:	27,0 - 40,0
Weight in kg:	42,0
Delivery condition:	Delivery is partially disassembled. Front panel/shaft separated
Shipping information:	Depending on the order volume, delivery is made by parcel shipment or bulky goods shipment. Partial deliveries are possible for products that can be disassembled (e.g., for floor-standing mailboxes, the stand & box can be shipped separately).