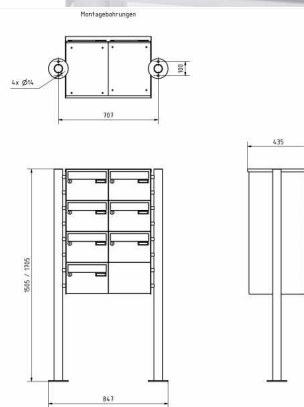
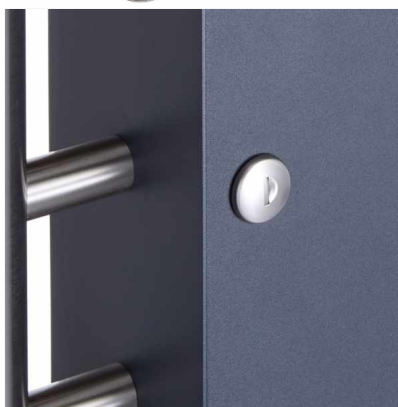


Order number: 385XR220-7S

Manufacturer: Briefkasten Manufaktur Lippe

ab **€2,992.00 ***

incl. VAT [plus shipping costs](#) (exclusive of VAT for logged-in users with VAT ID and Non-EU countries)



7-compartment 4x2 stainless steel free-standing letterbox Design BASIC Plus 385X ST-R - 220mm - RAL of your choice

Modern free-standing letterbox for 7 parties made in Germany by Briefkasten Manufaktur.

The large mailboxes with 25 liters volume are made of stainless steel V2A, powder coated in RAL color, the stand elements are made of weather-resistant stainless steel V2A, ground. The very high quality workmanship and the sophisticated concept make this mailbox system our top seller. A rain drainage edge for optimal water protection, an insertion flap with rubber lip, the solid changeable name plate and the robust lock distinguish this free-standing letterbox. This letterbox is easy to clean and insensitive. The letterboxes of the BASIC Plus collection are characterized by the consistent use of stainless steel V2A. The result is a very high durability and sustainability. The construction has been developed by our own engineers with regard to high flexibility resp. modularity, easy spare parts assembly and uncomplicated self-assembly. Spare parts are directly available for all BASIC Plus systems.

• 7-compartment free-standing letterbox made of stainless steel V2A, powder coated in RAL color

- The system is manufactured at Briefkasten Manufaktur. German quality production "Made in Germany".
- The mailboxes comply with DIN/EN 13724. Insertion size (3.5 cm x 26.5 cm) for C4 high, here fit even large letters without bending.
- Insertion flaps with noise-damping rubber lip for very quiet insertion of mail.
- The doors can be opened from left to right.
- Incl. 2 keys with key number and change name plate under the access flap per mailbox.
- Incl. close-fitting side panel + rain cover made of stainless steel V2A, powder-coated in RAL color.
- The stand elements are made of 60.0 mm V2A stainless steel 1.4301, ground for screw mounting or for setting in concrete.

Important information:

Mail is only protected from moisture and dirt when fully inserted and the flap is closed. In certain extreme weather conditions, water can still enter (according to DIN EN 13724 up to 1ccm). This is not a reason for complaint.

Abmessungen & Details

Number of parties:	7
Item withdrawal:	Front
Base material:	Stainless steel
Height single box in cm:	22,0
Width single box in cm:	30,0
Volume single box in liters:	25,0
Height letter slot in cm:	3,5
Width letter slot in cm:	26,5
Height letterbox system in cm:	88,0
Width letterbox system in cm:	60,0
Overall height in cm:	150,0 170,0
Total width in cm:	76,5
Depth in cm:	43,5
Weight in kg:	34,0
Delivery condition:	Delivery is made in blocks, stand elements / letterbox divided
Shipping information:	Depending on the order volume, delivery is made by parcel shipment or bulky goods shipment. Partial deliveries are possible for products that can be disassembled (e.g., for floor-standing mailboxes, the stand & box can be shipped separately).