

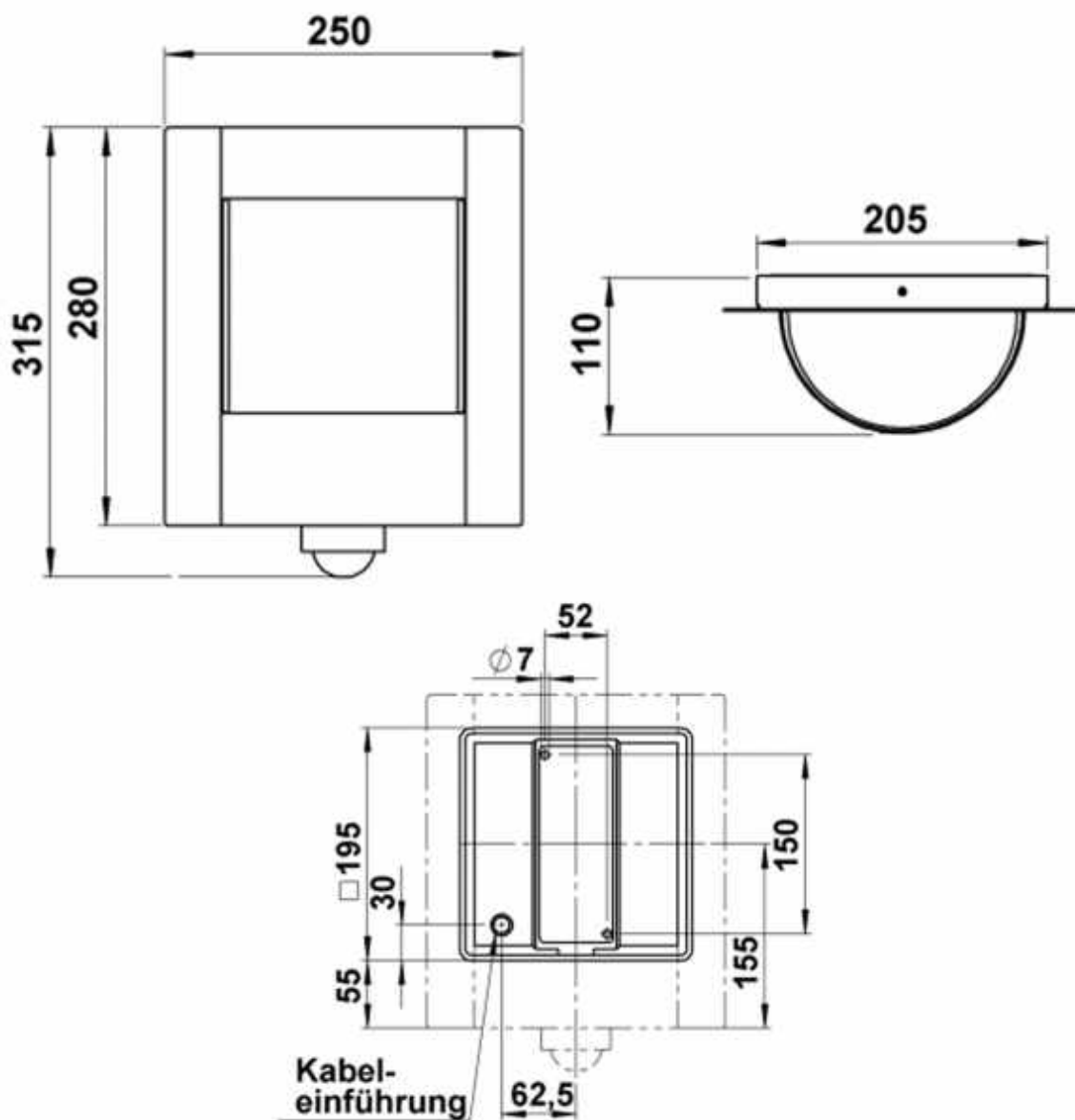


**Order number:** 636R

**Manufacturer:** Briefkasten Manufaktur OEM

ab **€361.00 \***

incl. VAT [plus shipping costs](#) (exclusive of VAT for logged-in users with VAT ID and Non-EU countries)



## Design wall lamp cellar with motion detector 250x315- stainless steel powder-coated- RAL of choice

High quality wall lamp with motion detector for the outer and indoor area with aperture made of stainless steel, powder-coated.

- The wall lamp consists of cast aluminum, stainless steel, powder-coated and press glass, opal.
- incl. Integrated motion detector.
- Socket E 27, suitable for lamps of the energy classes A ++ to e max. 57 w.
- protective conductor connection.
- Protection class IP 44- splash-protected.
- with an assembly plate made of aluminum casting for fastening.
- 2 fastening holes 6 mm, distance diagonal, vertical 150 mm, horizontal 52 mm connection clamp 2 x 2.5 mm<sup>2</sup>.
- CE- signs of conformity.

### assembly :

for the installation and for the operation of this lamp are the national and to observe international electronic safety regulations. With the help of the three threads, loosen the wall shield from the light fitting. Purify the network guide connection through the cable throughput and the wall shield Fix on the assembly. Push the enclosed silicone hoses over the connectors. Make the protective conductor connection and electrical connection to the terminal. Use lamps. Luminaire fitting and glass with the threads on Tense the wall shield. To handle the integrated motion detector, please read the enclosed Operating instructions.

### Abmessungen & Details

**Illuminant:** without

**Depth in cm:** 11,0

**Base material:** Stainless steel

**Width in cm:** 25,0

**Height in cm:** 31,5