

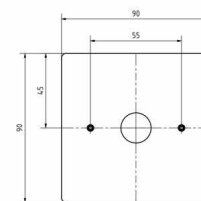
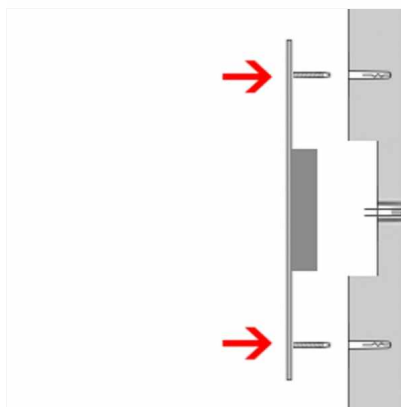
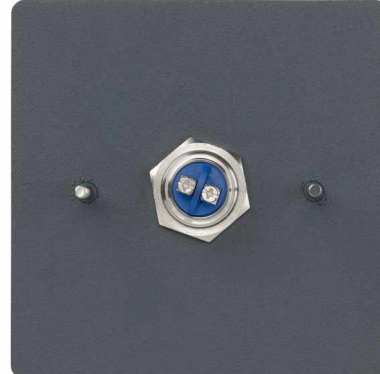
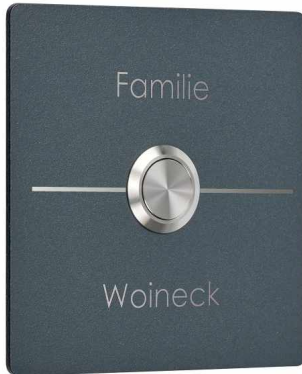


**Order number:** 421E1-9090-7016

**Manufacturer:** Briefkasten Manufaktur Lippe

ab **€69.00 \***

incl. VAT [plus shipping costs](#) (exclusive of VAT for logged-in users with VAT ID and Non-EU countries)



## Stainless steel bell plate BASIC Elegance I 421E1-9090 powder coated - QUADRATIC

The bell plate BASIC in RAL color has a very high quality finish and a robust stainless steel button. The inscription of the name in stainless steel looks very elegant and modern. Installation is simple by inserting the supplied dowels into the masonry, then the element is "hammered" into the dowels. In this way, you achieve an optimal and secure fastening. The fixing material is included. Optionally, surface mounting is possible with the surface-mounted housing.

- Bell plate made of 2mm stainless steel, powder coated in RAL color fine structure matt.
- Round stainless steel bell push button, max. 24 V AC/DC, 1.5 A, IP 54 (pressure force limitation).
- Dimensions: 90 x 90 x 2 mm (W x H x D).
- Optional name inscription, lasered approx. 7mm high.

### Abmessungen & Details

<b>Number of bell buttons:</b>	1
<b>Number of parties:</b>	1
<b>Base material:</b>	Stainless steel
<b>Height in cm:</b>	9,0
<b>Width in cm:</b>	9,0
<b>Depth in cm:</b>	UP 0.2   AP 2.7