

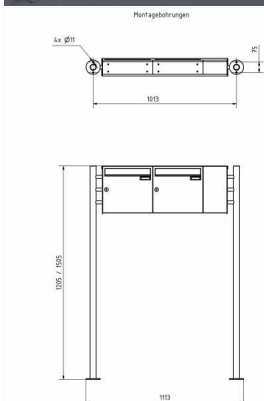


Order number: 381X-2W-SP-100-R

Manufacturer: Briefkasten Manufaktur Lippe

ab **€1,205.00 ***

incl. VAT [plus shipping costs](#) (exclusive of VAT for logged-in users
with VAT ID and Non-EU countries)



2-compartment Stainless steel free-standing letterbox Design BASIC Plus 381X ST-R with bell box on the side - RAL of your choice

Modern free-standing letterbox for 2 parties - made in Germany by Briefkasten Manufaktur.

The letterboxes are made of stainless steel V2A, powder coated in RAL color, the stand elements are made of weather-resistant stainless steel V2A, ground. The very high quality workmanship and the sophisticated concept make this free-standing letterbox our top seller. A rain drainage edge for optimal water protection, a continuous rubber lip for quiet insertion, the solid interchangeable name plate, a practical mail holding bracket and the very robust lock distinguish this free-standing letterbox. The side panel with protruding rain cover made of stainless steel V2A offers optimum protection against the weather and guarantees a very long service life.

The letterboxes of the BASIC Plus collection are characterized by the consistent use of stainless steel V2A. The result is a very high durability and sustainability. The design has been developed by our own engineers with a view to high flexibility or modularity, easy spare parts assembly and uncomplicated self-assembly. Spare parts are directly available for all BASIC Plus units.

• 2-compartment free-standing letterbox made of stainless steel V2A, powder coated in RAL color

- The system is manufactured at Briefkasten Manufaktur. German quality production "Made in Germany".
- The mailboxes comply with DIN/EN 13724. Insertion size (3.5 cm x 32.5 cm) for C4 crosswise, here fit even large letters without bending.

- Insertion flap with noise-damping rubber seal for very quiet insertion of mail.

- The door can be opened from left to right.

- Incl. 2 keys with key number, changeable name plate (type 2) under the access flap and mail retainer.

- Large capacity due to optional mailbox depth +50 mm = approx. 17 l. Suitable for companies and households with very large mail volumes.

- Incl. side cover + rain roof made of stainless steel V2A, powder coated in RAL color.

• Bell box made of stainless steel V2A, powder coated in RAL color fine structure matt

- Speech hole with universal adapter. (Intercom system / built-in speaker not included). Optionally also available without speech perforation.

- Universal adapter is suitable for all commercially available built-in speakers (Siedle, Ritto, TCS, Busch-Jäger, Gira, Legrand Bticino, ELCOM, Auerswald, Comelit and many more).

- Round stainless steel bell push button type: Grothe Protact, max. 24 V AC/DC, 1.5 A, IP 54 (pressure force limitation).

- Anti-vandalism - the nameplate is dent-proof and impact-resistant, the plastic is flame-retardant.

- Cable access: Ø 10.4 mm (right side). Invisible cable routing through the stand element.

- The stand elements are made of 42.4 mm V2A stainless steel 1.4301, ground for screw mounting or setting in concrete.

Important information:

Mail is only protected from moisture and dirt when fully inserted and the flap is closed. In certain extreme weather conditions, water can still enter (according to DIN EN 13724 up to 1ccm). This is not a reason for complaint.

Abmessungen & Details

Number of parties:	2
Item withdrawal:	Front
Base material:	Stainless steel
Height single box in cm:	33,0
Width single box in cm:	35,5
Volume single box in liters:	12,0 17,0
Height letter slot in cm:	3,5
Width letter slot in cm:	32,5
Height letterbox system in cm:	33,0
Width letterbox system in cm:	88,0
Overall height in cm:	120,0 150,0
Total width in cm:	106,0
Depth in cm:	10,0 15,0
Weight in kg:	26,0
Delivery condition:	Delivery is made in blocks, stand elements / letterbox divided
Shipping information:	Depending on the order volume, delivery is made by parcel shipment or bulky goods shipment. Partial deliveries are possible for products that can be disassembled (e.g., for floor-standing mailboxes, the stand & box can be shipped separately).