



Order number: 381X-1S-KSVST7-100

Manufacturer: Briefkasten Manufaktur Lippe

ab **€2,922.00 ***

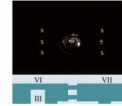
incl. VAT [plus shipping costs](#) (exclusive of VAT for logged-in users
with VAT ID and Non-EU countries)



Die überblickbare Auswahlkarte und die komplette Suchfunktion helfen beim schnellen Auffinden der gewünschten Person auch bei einer Vielzahl von gespeicherten Teilnehmern.

Die Infocreen mit großzügigen Text- und Bildinformationen vermittelt das Auffinden des gewünschten Teilnehmers bei Firmen, Abteilungen, Wohngemeinschaften, Anwohnern etc.

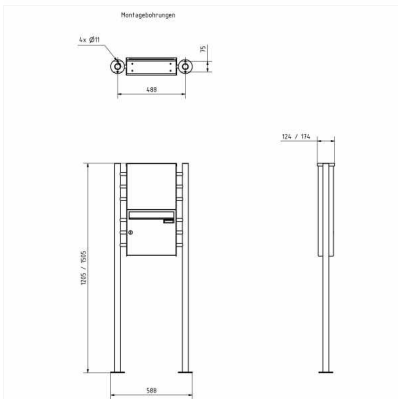
Unser Beitrag für barrierefreies Bauen nach DIN 19164: Für Menschen mit beeinträchtigten Hörvermögen werden die jeweiligen Funktionsschritte visuell angezeigt.



Für jeden Teilnehmer können eine Größe in B. Länge und bis zu 4 Textzeilen gespeichert werden. So lassen sich zusätzlich zur Frage auch Gebäudefarbe, Abteilungen, Öffnungszeiten etc. anzeigen.

Die integrierte Technik für Dualbus-Sprechungen steht für eine hohe Sprachqualität. Für Videosprechanlagen liefert die integrierte Kamera ein scharfes, kontrastreiches Bild.

Mit elektronischem Schlüssel oder Ziffernkombi mit rotierender Ziffernanzeige erhalten berechnete Personen durch Auslösen des elektronischen Türöffners einen einfachen und sicheren Zugang zum Gebäude.



Stainless steel free-standing letterbox BASIC Plus 381X ST-R - RAL at choice - digital camera - intercom - VIDEO complete set

Modern free-standing letterbox - made in Germany by Briefkasten Manufaktur.

The mailbox is made of stainless steel V2A, powder coated in RAL color, the stand elements are made of weather-resistant stainless steel V2A, ground. With the integrated Qwiksmart Touch door station, every visitor feels welcome immediately. Door call, intercom and electronic access control are combined in one compact, easy-to-use device. An easy-to-read, large 7" color display behind the elegant front made of special tempered glass automatically greets the user as he approaches with a customizable welcome screen. Simply with a tap of the finger, the visitor selects the desired function directly on the capacitive touch display, which the powerful computer, specially developed for industrial applications, implements quickly and precisely. The very high-quality workmanship and the well thought-out concept make this free-standing letterbox our top seller. A rain drainage edge for optimal water protection, a continuous rubber lip for quiet insertion, the solid interchangeable name plate, a practical mail retaining bracket and the very robust lock are the distinguishing features of this free-standing letterbox. The side panel with protruding rain cover made of stainless steel V2A offers optimal protection against the weather and guarantees a very high durability.

The letterboxes of the BASIC Plus collection are characterized by the consistent use of stainless steel V2A. The result is a very high durability and sustainability. The design has been developed by our own engineers with a view to high flexibility or modularity, easy spare parts assembly and uncomplicated self-assembly. Spare parts are directly available for all BASIC Plus systems.

- free-standing letterbox completely made of stainless steel V2A with letterbox, powder coated in RAL color of your choice.
- The system is made at the Briefkasten Manufaktur. German quality production "Made in Germany".
- The letterbox complies with DIN/EN 13724. Insertion size (3.5 cm x 32.5 cm) for C4 crosswise, here fit even large letters without bending.
- Insertion flap with noise-damping rubber seal for very quiet insertion of mail.
- The door can be opened from left to right.
- Incl. 2 keys with key number, 2-piece flush removable nameplate under the access flap and mail retaining bracket.
- Large capacity due to optional mailbox depth +50 mm = approx. 17 l. Suitable for companies and households with very large mail volumes.
- Incl. side cover + rain roof made of stainless steel V2A, powder coated in RAL color.
- The stand elements are made of 60.3 mm V2A stainless steel 1.4301, ground for screw mounting or for setting in concrete.



STR Qwiksmart Touch 7 Digital Door Station - 13610

The operation of the Qwiksmart Touch door station is very comfortable and very easy. Thanks to a specially developed user interface as well as the intuitive operating concept, every user finds his way around quickly and safely. Few operating steps as well as easily understandable symbols help with the operation in a language-neutral way. Visual and acoustic feedback in the operating sequence also supports people with impaired vision or hearing. The integrated search function allows the desired person to be found and called quickly, even from a large number of subscribers. The perfect combination of design and technology Door call and communication between visitor and subscriber take place securely and with excellent speech quality in conjunction with a Qwikbus intercom system. A color camera is already integrated for the video function. The LEDs are switched on automatically and the system switches to night mode. Two different methods for electronic access control are also already integrated: The RFID reader is suitable for opening the door by means of an electronic key. Alternatively, the switching process can also be triggered by entering a PIN code via the virtual numeric keypad.

Mobile door communication via app

The door station can forward the doorbell ring to the Qwiksmart plus smartphone app, thus enabling the door to be spoken to, seen and opened using the app. For this to work, the smartphone must be connected to an existing account at the door station. For this purpose, the "Qwiksmart plus app activation" function must be activated in the account. Two licenses for the "Qwiksmart plus app connection" are automatically included with the purchase of the door station. If more apartments want to use the Qwiksmart plus app connection, the corresponding licenses must be purchased. Up to five end devices can be registered per account.

- multifunctional unit for 2-wire intercom systems.
- 7" touch display for operation directly on the display.
- integrated audio/video intercom, usable with all Qwikbus indoor stations for audio and video.
- acoustic and visual status indication of the intercom system for accessibility according to DIN 18040 (two-senses principle).
- Subscriber list for up to 2000 subscribers, with convenience search function (by name, department, etc.).
- Proximity sensor for automatic activation of the display when a person approaches.
- multiple languages, logos, maps etc.
- integrated camera, resolution up to Full-HD 1920 x 1080 px, automatic activation of integrated IR-LED illumination in darkness, recommended installation height camera approx. 160 cm above OKFF.
- Temperature range -20°/+50° C.
- integrated technology for electronic keyless access control by means of virtual code module (combination lock with rotating numeric display) and integrated RFID reader (for electronic transponder keys).
- required power supply 12 V DC or PoE.
- Connection for door opener (requires 12 V AC bell transformer, NTR201).
- Programming/administration by means of PC or mobile device via network (also via remote maintenance).
- Detection of tampering attempts with tamper contact.
- Front safety glass black for high vandalism protection.
- as a compact complete unit for flush mounting directly in the wall or as a rear-mounted device for flush mounting in metal door stations, letterboxes or multifunctional pedestals.

STR handsfree station - optionally AUDIO or VIDEO

STR bus power supply SP333 - 33306

- The bus power supply SP333 manages the bus data and provides up to 4x door opener outputs 12V/AC 1A and 2x light relay outputs 12V/AC 1A. The device is mounted on a top-hat rail according to DIN EN 60715.
- for top hat rail mounting, 6 TE

STR Power supply unit SNT333 - 33305

- The power supply unit SNT333 is used for power supply of STR Qwikbus video systems. It is also used in Qwikbus audio systems from approx. 30 subscribers. The output voltage is 24V/DC and can also be adjusted via a potentiometer (ADJ). It is mounted on a top-hat rail according to DIN EN 60715.
- for top hat rail mounting, 5 TE

STR DC power supply for operating external cameras - 31512

- for top hat rail mounting, 1 division unit.

STR ballast transformer NTR201 - 10631

- for top hat rail mounting, 6 division units

Important information:

Mail is protected from moisture and dirt only when fully inserted and the flap is closed. In certain extreme weather conditions, water may nevertheless enter (according to DIN EN 13724 up to 1ccm). This is not a reason for complaint.

Abmessungen & Details

Number of parties:	1
Item withdrawal:	Front
Base material:	Stainless steel
Height single box in cm:	33,0
Width single box in cm:	35,5
Volume single box in liters:	12,0 17,0
Height letter slot in cm:	3,5
Width letter slot in cm:	32,5
Height letterbox system in cm:	66,0
Width letterbox system in cm:	35,5
Overall height in cm:	170,0
Total width in cm:	56,5
Depth in cm:	10,0 15,0
Weight in kg:	18,0
Delivery condition:	Delivery is made in blocks, stand elements / letterbox divided
Shipping information:	Depending on the order volume, delivery is made by parcel shipment or bulky goods shipment. Partial deliveries are possible for products that can be disassembled (e.g., for floor-standing mailboxes, the stand & box can be shipped separately).