



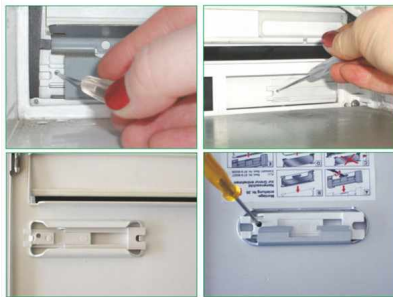
**Order number:** BML-STPKV

**Manufacturer:** Briefkasten Manufaktur Lippe

**Gewicht:** 0.1 kg

ab **€16.90 \***

incl. VAT [plus shipping costs](#) (exclusive of VAT for logged-in users with VAT ID and Non-EU countries)



## Stopy letterbox flap lock for mounting in the punched hole of the name plate

The Stopy plastic letterbox flap lock is mounted over the nameplate opening and protects against unwanted mail delivery. This is useful when the tenant moves out, for example. In this way, you efficiently protect yourself from overfilled letterboxes during transitional periods.

The installation is done via the nameplate opening (legally protected). When the tenant moves out, remove the nameplate. The Stopy letterbox flap lock is inserted into the nameplate opening from the outside and locked from the inside - done. The flap is blocked and the deliverer sees at first glance that the flat is empty. When the apartment is re-rented, the Stopy is removed and the name tag is put back into the opening. Stopy can be used several times and your letterbox remains permanently beautiful.

### The advantages of the Stopy letterbox flap lock

- Your letterbox remains clean and tidy
- You don't have to deal with former tenant's mail and junk mail.
- Stopy is suitable for many types of letterboxes.
- Stopy can be used several times.
- Tool-free mounting via the nameplate.
- Fits all letterbox types of the BASIC collection.

### Abmessungen & Details

**Base material:** Plastic

**Height in cm:** 6,0

**Width in cm:** 9,0