

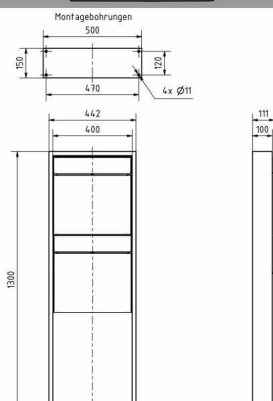
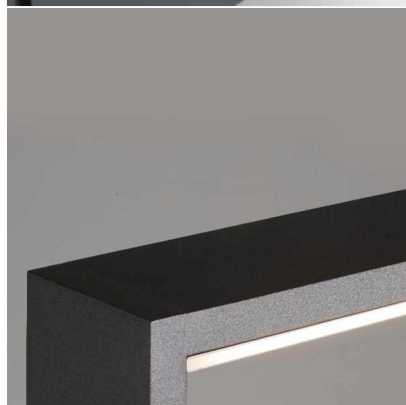


Order number: 215-LIB-2

Manufacturer: Briefkasten Manufaktur Lippe

ab **€1,431.00 ***

incl. VAT [plus shipping costs](#) (exclusive of VAT for logged-in users
with VAT ID and Non-EU countries)



2-compartment Design free-standing letterbox GOETHE LIB - LED design element - RAL of your choice

High-quality manufactured 2-compartment free-standing letterbox with elegant stainless steel rectangular tube stand incl. LED design element. The modern GOETHE letterbox is ideal for the sophisticated entrance area. The linear design without a visible lock makes this letterbox look particularly elegant.

The dimensions of the individual box allow for a capacity of approx. 16 liters, while the large slot guarantees no crumpled mail, even with DIN C4 envelopes and magazines or after several days of absence. The innovative push-key lock is concealed inside the letterbox. The key is simply inserted into the existing opening (no turning necessary) and the door opens. With the arrangement of the lock, this letterbox is designed in such a way that the removal door prevents the mail from falling towards you. The water drainage edge ensures that the mail inside is optimally protected from the weather. The insertion flap is equipped with high-quality axle dampers, guaranteeing quiet closing and preventing annoying rattling caused by the weather.

The letterbox systems in the GOETHE collection are characterized by the consistent use of stainless steel. The result is a very long service life and sustainability. The design has been developed by our own engineers with a view to high flexibility and modularity, simple spare parts assembly and uncomplicated self-assembly. Spare parts for all GOETHE systems are available directly in our store.

Thanks to the design, self-assembly is uncomplicated.

Protected utility model according to DPMA file number DE: 20 2021 101 679.5

- 2-compartment free-standing letterbox with rectangular tube stand element and stainless steel letterbox.
- Quality production - Made in Germany by Briefkasten Manufaktur Lippe.
- Flat LED lighting unit as a design element. LED 3000 K 395x100 mm x 5 mm, IP65 2 meter supply cable 24 Volt, 10 Watt, Plexiglas edges satined incl. LED power supply unit
- Letterboxes (BH 400x400mm) made of stainless steel 1.4016 (non-rusting magnetic stainless steel), powder-coated in RAL of your choice.
- Innovative push-key lock with 2 keys.
- Letter insertion and removal from the front. Insertion flap with high-quality axle dampers for very quiet mail insertion.
- The letterbox complies with DIN/EN 13724. Insertion size (3.5 cm x 36.0 cm) for C4 across, even large letters fit in here without creasing.
- Removal door opens from top to bottom. So the mail cannot fall towards you.
- Optional name lettering approx. 15-20 mm high.
- Optimum rain protection thanks to rain run-off edges.
- The stand is made of 2mm stainless steel rectangular tube, powder-coated in RAL color with 6mm base plate for screw mounting.

Important information:

To achieve optimum water protection for your mail, the letterbox or letterbox system should be located under a canopy if possible. The mail is only protected from water if it is fully inserted in the box and the flap is closed. Mail that is not fully inserted allows moisture and dirt to enter the letterbox. This system is protected against the ingress of water in accordance with DIN EN 13724. Water ingress is not a reason for complaint.

Abmessungen & Details

Number of parties:	2
Item withdrawal:	Front
Base material:	Stainless steel
Illuminant:	LED, 10 watt
Height single box in cm:	40,0
Width single box in cm:	40,0
Volume single box in liters:	16,0
Height letter slot in cm:	3,5
Width letter slot in cm:	36,0
Height letterbox system in cm:	80,0
Width letterbox system in cm:	40,0
Overall height in cm:	130,0
Total width in cm:	44,0
Depth in cm:	10,0
Weight in kg:	26,0
Delivery condition:	Delivery is assembled
Shipping information:	Depending on the order volume, delivery is made by parcel shipment or bulky goods shipment. Partial deliveries are possible for products that can be disassembled (e.g., for floor-standing mailboxes, the stand & box can be shipped separately).