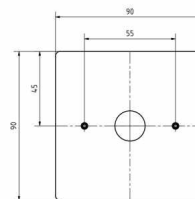


**Order number:** 422-9090

**Manufacturer:** Briefkasten Manufaktur Lippe

ab **€44.90 \***

incl. VAT [plus shipping costs](#) (exclusive of VAT for logged-in users with VAT ID and Non-EU countries)



## Stainless steel bell plate BASIC 422-9090 - SQUARE

The bell plate BASIC made of stainless steel V2A has a very high quality finish and a robust stainless steel button. Installation is simple by inserting the supplied dowels into the masonry, then the element is "hammered" into the dowels. In this way, you achieve an optimal and secure fastening. The fixing material is included. Optionally, surface mounting is possible with the surface-mounted housing.

- Bell plate made of 2mm stainless steel, ground.
- Round stainless steel bell push button, max. 24 V AC/DC, 1.5 A, IP 54 (pressure force limitation).
- Dimensions: 90 x 90 x 2 mm (W x H x D).
- Optional name inscription, lasered approx. 7mm high.

### Abmessungen & Details

**Number of bell buttons:** 1

**Number of parties:** 1

**Base material:** Stainless steel

**Height in cm:** 9,0

**Width in cm:** 9,0

**Depth in cm:** UP 0.2 | AP 2.7