

# Stainless steel letterbox BASIC 810 W with newspaper compartment, for side wall mounting | with newspaper compartment | 100mm depth | Stainless steel, ground

**Product number** 810-1-W-ZF



## Product description

### Stainless steel letterbox BASIC 810 W with newspaper compartment, for side wall mounting

This letterbox combines the highest quality and modern design. The letterbox is made entirely of stainless steel V2 A 1.4301, polished. The polished appearance is characterised by the highest level of elegance. Extremely high-quality workmanship and the well thought-out concept make this free-standing letterbox our top seller. A rain drainage edge for optimum water protection, a continuous rubber lip for quiet insertion and the very robust interchangeable nameplate characterise this letterbox.

Thanks to the design, self-assembly is straightforward.

The letterbox is manufactured by Briefkasten Manufaktur. 100% Made in Germany, Bad Salzuffen.

- Letterbox made of stainless steel V2A 1.4301, polished.
- Newspaper compartment made of V2A stainless steel, polished. Open on both sides.
- The removal doors can be opened from left to right with rain drainage edge for optimum water protection.
- Insertion flap with sound-absorbing rubber seal for very quiet mail insertion.
- With changeable nameplate and 2 keys.
- Incl. rain cover made of stainless steel V2A 1.4301, 240 grain polished.
- The letterboxes comply with DIN EN 13724. Insertion size (5.5 cm x 34.0 cm) for DIN C4 landscape, large letters also fit in here without creasing.
- The mounting pillars are made of 42.4 mm stainless steel V2A 1.4301, polished for screw mounting on the house wall.

#### Important information:

The post is only protected from moisture and dirt when it is fully inserted and the flap is closed. Under certain extreme weather conditions, water can still enter (up to 1ccm according to DIN EN 13724). This is not a reason for complaint.

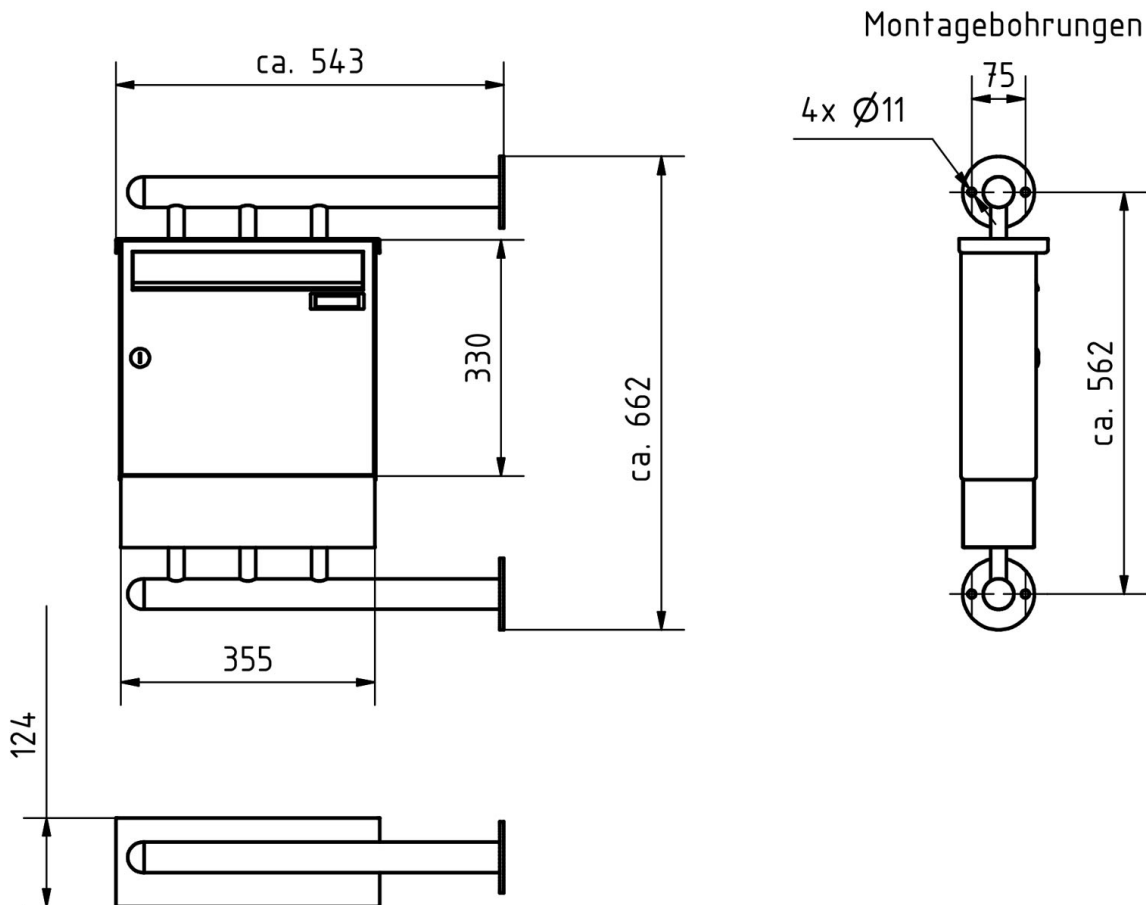
## Product properties

<b>Series</b>	BASIC
<b>Functions</b>	Newspaper compartment
<b>Boxes by volume</b>	Normal > 10 litres
<b>Name labelling</b>	Nameplate
<b>Material</b>	Stainless steel V2A 1.4301
<b>House number</b>	House number as laser engraving
<b>Removal of mail</b>	On the front
<b>Number of boxes</b>	with 1 letterbox
<b>Surface/colour</b>	Brushed
<b>Mounting type</b>	Surface-mounted

## Dimensions

<b>Height of single box in mm</b>	330,0
<b>Width of single box in mm</b>	355,0
<b>Capacity in litres</b>	12,0   17,0
<b>Height of letterbox slot in mm</b>	35,0
<b>Width of letter slot in mm</b>	325,0
<b>Height of letterbox in mm</b>	430,0
<b>Width of letterbox system in mm</b>	355,0
<b>Depth in mm</b>	100,0   150,0
<b>Weight in kg</b>	12

## Drawing



## More images

