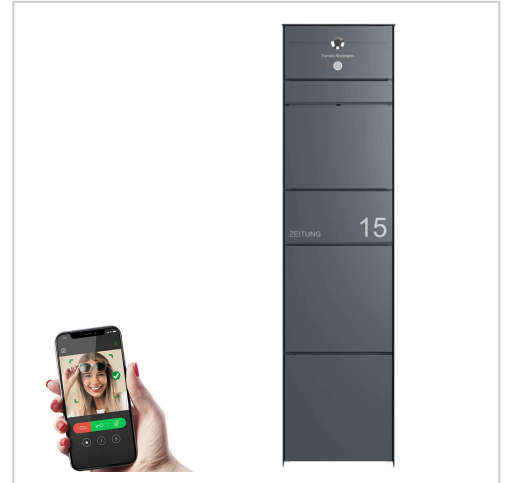


# Design letterbox pedestal GOETHE with newspaper compartment - RAL of your choice - COMELIT Switch - VIDEO complete set Wifi | 100mm depth

**Product number** 215-STL-160-1ZFSP-KSCS-10



## Product description

### Design letterbox pedestal GOETHE with newspaper compartment - RAL of your choice - COMELIT Switch - VIDEO complete set

High-quality letterbox pedestal with newspaper compartment and video intercom system in flush-mounted design. The modern GOETHE letterbox is ideal for the sophisticated entrance area. The linear design without a visible lock makes this letterbox look particularly elegant. Integrated Comelit VIDEO complete set Wifi. The Comelit video intercom system is an innovative solution with functions such as face recognition, voice commands and operation via smartphone app. Completely pre-programmed for easy installation - connect 2 wires and DONE! Optionally with gateway without home station or with WiFi home station.

The dimensions of the individual box allow a capacity of approx. 16 or 32 litres, the large slot guarantees no crumpled mail even with DIN C4 envelopes and magazines or after several days of absence. The innovative push-key lock is concealed inside the letterbox. The key is simply inserted into the existing opening (no turning required) and the door opens. With the arrangement of the lock, this letterbox is designed in such a way that the removal door prevents the mail from falling towards you. The water drainage edge ensures that the mail inside is optimally protected from the weather. The insertion flap is fitted with high-quality axle dampers, guaranteeing quiet closing and preventing annoying rattling caused by the weather.

The letterbox systems in the GOETHE collection are characterised by the consistent use of stainless steel and aluminium. The result is a very long service life and sustainability. The design has been developed by our own engineers with a view to high flexibility and modularity, simple spare parts assembly and uncomplicated self-assembly. Spare parts for all GOETHE systems are available directly in our shop.

Thanks to the design, self-assembly is uncomplicated.

**Protected utility model according to DPMA file number DE: 20 2021 101 679.5**

- High-quality letterbox pillar made of stainless steel and aluminium.
- Quality production - Made in Germany by Briefkasten Manufaktur Lippe.
- Letterbox (BH 400x400mm) made of stainless steel 1.4016 (non-rusting magnetic stainless steel), powder-coated in RAL of your choice.
- Innovative push-key lock with 2 keys.
- Mail is inserted and removed from the front. Insertion flap with high-quality axle dampers for very quiet mail insertion.
- The letterbox complies with DIN/EN 13724. Insertion size (3.5 cm x 36.0 cm) for C4 across, even large letters fit in here without creasing.
- Removal door opens from top to bottom. So the mail cannot fall towards you.
- Newspaper compartment (BH 400x200mm) made of stainless steel 1.4016 (non-rusting magnetic stainless steel), powder-coated in RAL of your choice with stainless steel laser inscription "ZEITUNG" (font ARIAL, if name/house number, then the same as your chosen font).
- Newspaper compartment can be opened from bottom to top.
- Function box (BH 400x200mm) made of stainless steel 1.4016 (magnetic stainless steel), powder-coated in RAL colour of your choice.
- 8-12V DC short-stroke bell push-button with white LED ring lighting.
- Optionally with name labelling approx. 10-20mm high.
- Optionally with house number lettering approx. 60-80mm high.
- Optimum rain protection thanks to rain run-off edges and a rain canopy made of 3mm aluminium AlMg3 W19, powder-coated in RAL of your choice.
- Side cladding made of 3mm aluminium AlMg3 W19, powder-coated in RAL of your choice.
- Rear panel and base plate made of 6mm aluminium AlMg3 W19, powder-coated in RAL of your choice.
- Invisible fastening in the column thanks to reinforced base plate.
- Invisible cable feed through the body possible. The overall height is 1.65 m.

## Important information

### Camera or intercom preparation

**The intercom systems must be connected by an electrician. Please contact your trusted electrician for planning, fitting and installation.**

### Water protection

To achieve optimum water protection for your mail, the letterbox or letterbox system should be located under a canopy if possible.

The mail is only protected from water if it is fully inserted in the box and the flap is closed. Mail that is not fully inserted allows moisture and dirt to enter the letterbox. This system is protected against the ingress of water in accordance with DIN EN 13724. Water ingress is not a reason for complaint.

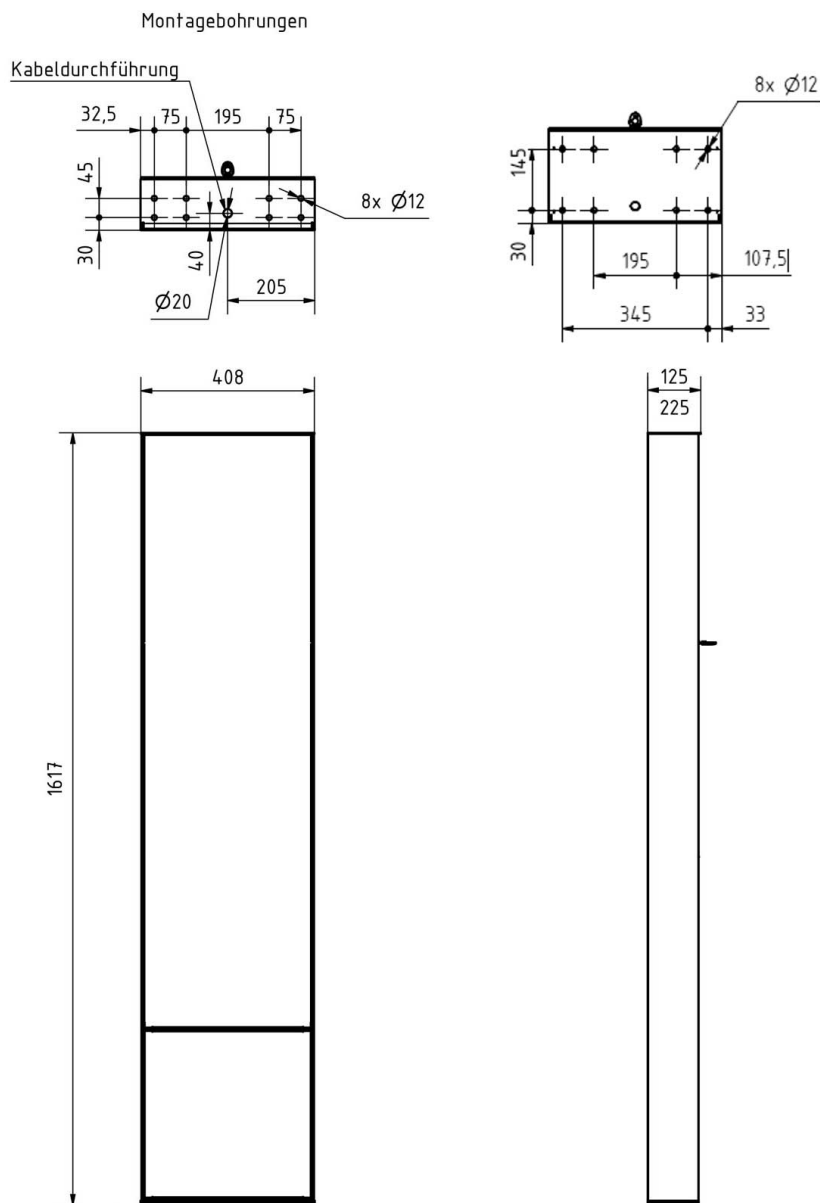
## Product properties

Surface/colour	RAL 9005 deep black, RAL 3004 crimson red, DB 703 iron mica, RAL 7016 anthracite grey, RAL of your choice (according to colour table), RAL 9007 grey aluminium, RAL 9016 traffic white
Series	GOETHE
Connection technology	2-wire
Number of bell push buttons	1 button
Functions	Newspaper compartment, Camera, Intercom
Functional box prepared for manufacturer	Comelit
Material	Aluminium AlMg3 W19, Stainless steel V2A 1.4301, Stainless steel 1.4016 (non-rusting magnetic stainless steel)
Mounting type	Free-standing
House number	House number as laser engraving
Name labelling	Laser-engraved
Removal of mail	On the front
Number of letterboxes	with 1 letterbox
Boxes by volume	Large > 16 litres

## Dimensions

Height of single box in mm	BK 400.0   ZF 200.0
Width of single box in mm	400,0
Capacity in litres	BK 16.0 - 32.0   ZF 8.0 - 16.0
Height of letterbox slot in mm	35,0
Width of letter slot in mm	360,0
Height of letterbox in mm	800,0
Width of letterbox system in mm	400,0
Overall height in mm	1614,0
Total width in mm	408,0
Depth in mm	100.0 + 25.0 Rain roof   200.0 + 25.0 Rain roof
Weight in kg	45
Delivery condition	Delivery is assembled

## Drawing



## More images

