

2-piece stainless steel letterbox Designer BIG - RAL of your choice - GIRA System 106 - 3-gang prepared | RAL 7016 anthracite grey, fine structure, matt | Plastered or flush-mounted variant 100mm

Product number 515B-2-R-V-GI106-UP100-70



Product description

2-piece stainless steel letterbox Designer BIG - RAL colour of your choice - GIRA System 106 - 3-gang prepared

High-quality manufactured letterbox with powder-coated front panel in RAL colour in extra-large format. The Gira System 106 can be used seamlessly in a flush-mounted design. The preparation is intended for 3 GIRA 106 system modules. The modules can be flush-mounted using the simple mounting system (surface-mounted housing 5503910 required!).

This is a real eye-catcher among letterboxes. Clear lines and no-frills design characterise the designer letterbox with GIRA System 106. Our products have a high quality, reliable functionality and their own identity. Made by Briefkasten Manufaktur.

- 2-piece designer stainless steel flush-mounted letterbox made of 2 mm stainless steel V2A with front panel powder-coated in RAL colour.
- Front mail removal door 320 mm x 300 mm, opens from top to bottom. Incl. 2 keys with key number per party.
- Mail slot from the front, dimensions: W 32 cm x H 6.3 cm, C4 landscape. Very large letters fit in here without creasing. Attention no removal protection!
- **Now with built-in damping elements that allow the flap to close slowly and quietly.**
- Flush-mounted or surface-mounted box dimensions: H 1220 mm x W 410 x D 100 | 150 mm. ATTENTION: The front panel protrudes by 2 cm all round, even with surface-mounted boxes.
- Plaster box made of galvanised steel. Surface-mounted box made of stainless steel V2A, ground on all sides without visible screw connection.
- Plaster box with pre-punched cable inlets on all sides.
- **WITHOUT GIRA system components!**

Important information

Camera or intercom preparation

The intercom systems must be connected by an electrician. Please contact your trusted electrician for planning, fitting and installation.

Water protection

To achieve optimum water protection for your mail, the letterbox or letterbox system should be located under a canopy if possible.

The mail is only protected from water if it is fully inserted in the box and the flap is closed. Mail that is not fully inserted allows moisture and dirt to penetrate the letterbox. It is therefore necessary to plan sufficiently dimensioned letterboxes for the upcoming requirements. In certain extreme weather conditions, water can still enter (up to 1ccm according to DIN EN 13724). This is not a reason for complaint.

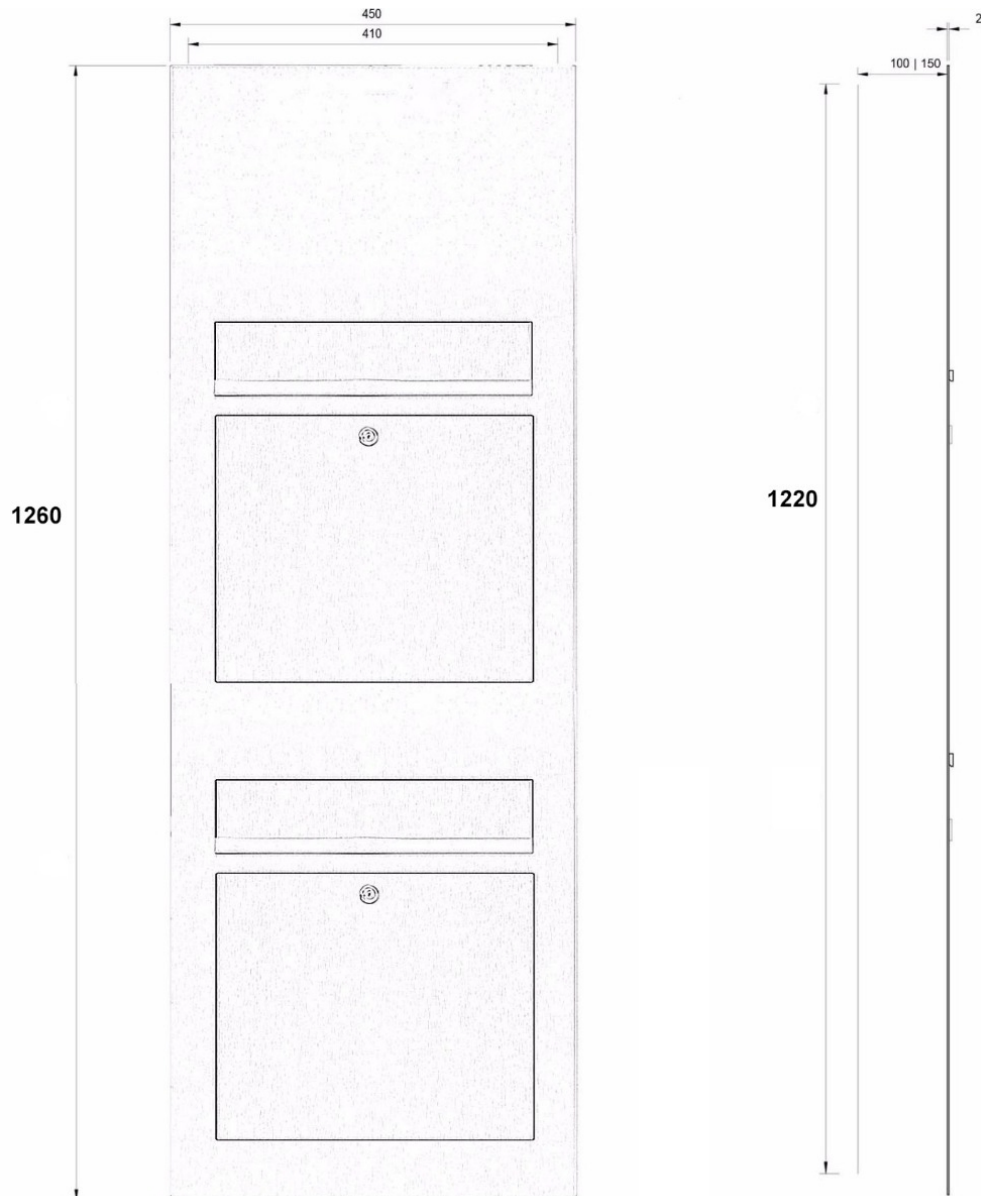
Product properties

| | |
|---|----------------------------|
| Series | DESIGNER |
| Functions | Newspaper compartment |
| Functional box prepared for manufacturer | GIRA |
| Material | Stainless steel V2A 1.4301 |
| Surface/colour | RAL 7016 anthracite grey |
| Number of boxes | with 2 letterboxes |
| Removal of mail | On the front |
| Boxes by volume | Large > 16 litres |
| Mounting type | Flush-mounted |

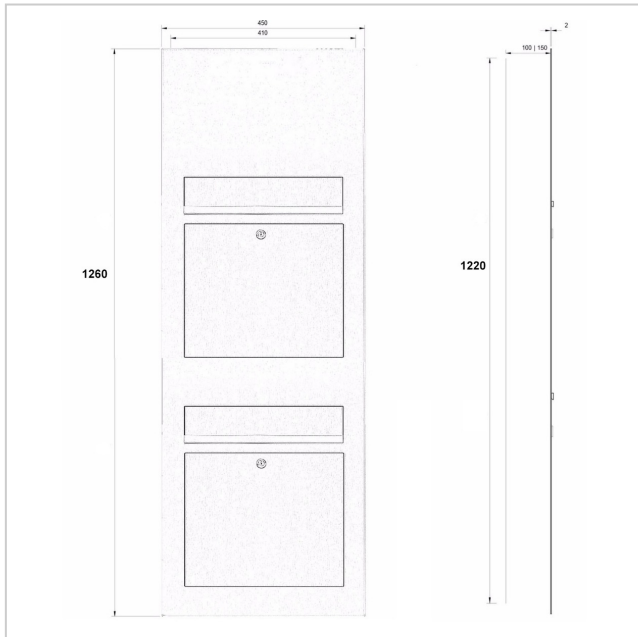
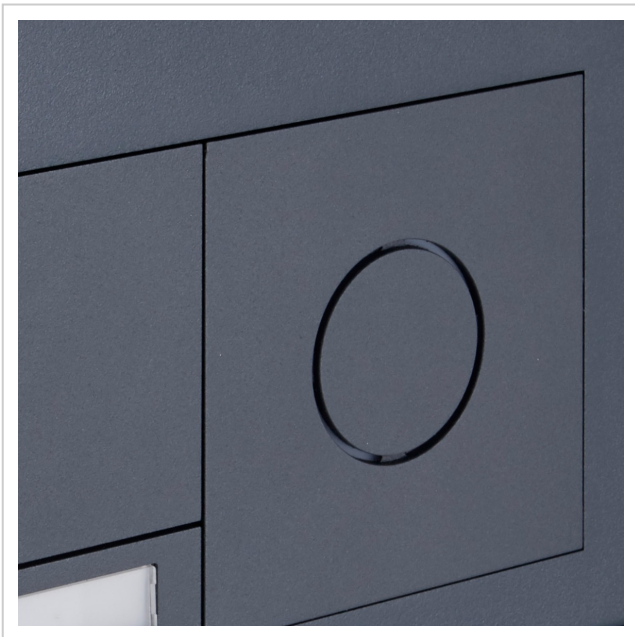
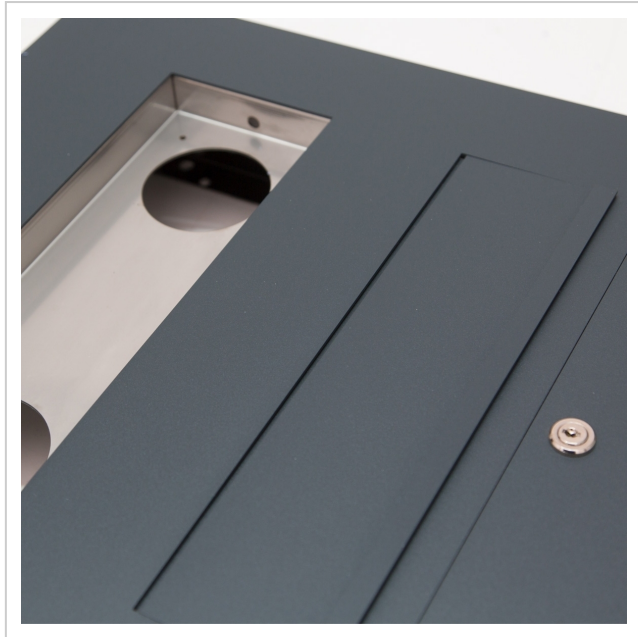
Dimensions

| | |
|---------------------------------------|-----------------------|
| Height of single box in mm | 1220,0 1260,0 |
| Width of single box in mm | 410,0 450,0 |
| Capacity in litres | 21,0 31,0 |
| Height of letterbox slot in mm | 63,0 |
| Width of letter slot in mm | 320,0 |
| Depth in mm | 100,0 150,0 |
| Weight in kg | 48 |
| Delivery condition | Delivery is assembled |

Drawing



More images







Eingebaute Dämpfungselemente lassen die Einwurflappe langsam und leise schließen