

BRENTANO® design letterbox - BI-Color VA polished - RAL 7016 anthracite grey | without newspaper compartment | Bi-colour polished stainless steel | RAL 7016 anthracite grey

Product number 803-7016VA-AP



Product description

BRENTANO® design letterbox - BI-Color VA polished - RAL 7016 anthracite grey

The BRENTANO® letterbox combines modern design with maximum functionality without a visible lock and elegant labelling of the house number and name. Manufactured from high-quality materials and powder-coated, this letterbox not only offers a stylish eye-catcher for your home, but also long-lasting quality. The clear design language and precise workmanship make the BRENTANO® letterbox a timeless solution for the highest demands. Thanks to its robust construction, it is particularly weather-resistant and reliably protects your mail. Ideal for anyone who values a perfect combination of design and function.

The generous dimensions of the BRENTANO® design letterbox allow a capacity of approx. 20 litres, which means that larger items such as DIN C4 envelopes or magazines can also be accepted without creasing - even after several days of absence. Top-loading ensures convenient handling. The letterbox is also equipped with dampers that ensure the flap closes gently and quietly. The innovative push-key lock, which is concealed inside, allows the door to be opened without turning the key - simply insert the key into the opening and the door opens effortlessly. The clever arrangement of the lock and the removal door prevents the mail from falling towards you when opening. Manufactured from stainless steel and galvanised steel with an additional powder-coated finish, this letterbox is particularly durable and has a high-quality finish.

The unique one-hand operating concept with the push-key lock, available exclusively from Briefkasten Manufaktur Lippe, makes it particularly easy to use: you can open the letterbox, remove the post and close it again with just one hand. Protected by a utility model (DPMA file number DE: 20 2021 101 679.5), this innovation offers real added value.

Thanks to the design, self-assembly is uncomplicated.

- High-quality surface-mounted letterbox, powder-coated in RAL 7016 anthracite grey.
- Quality production - Made in Germany
- Innovative push-key lock including 2 keys with key number. Convenient locking without a key.
- Letterbox body made of 1.5 mm galvanised steel.
- Removal door made of 1.5 mm stainless steel V2A 1.4301, polished with opening limiter, can be opened from top to bottom. The retaining plate prevents the mail from falling towards you.
- Mail is inserted from the top.
- The throw-in flap has an opening limiter that prevents it from touching the house wall. In addition, high-quality dampers ensure that the flap closes quietly and gently.
- The letterbox complies with DIN/EN 13724 and has a slot size (3.5 cm x 36.0 cm) for C4 landscape, so even large letters fit in without creasing.
- Includes self-adhesive and engravable name plate.
- Optional name labelling approx. 20-30 mm high.
- Optional house number labelling approx. 80-100mm high.
- For surface wall mounting including mounting screws and spacers.

Important information:

To achieve optimum water protection for your mail, the letterbox or letterbox system should be located under a canopy if possible.

The mail is only protected from water if it is fully inserted in the box and the flap is closed. Mail that is not fully inserted allows moisture and dirt to enter the letterbox. This system is protected against the ingress of water in accordance with DIN EN 13724. Water ingress is not a reason for complaint.

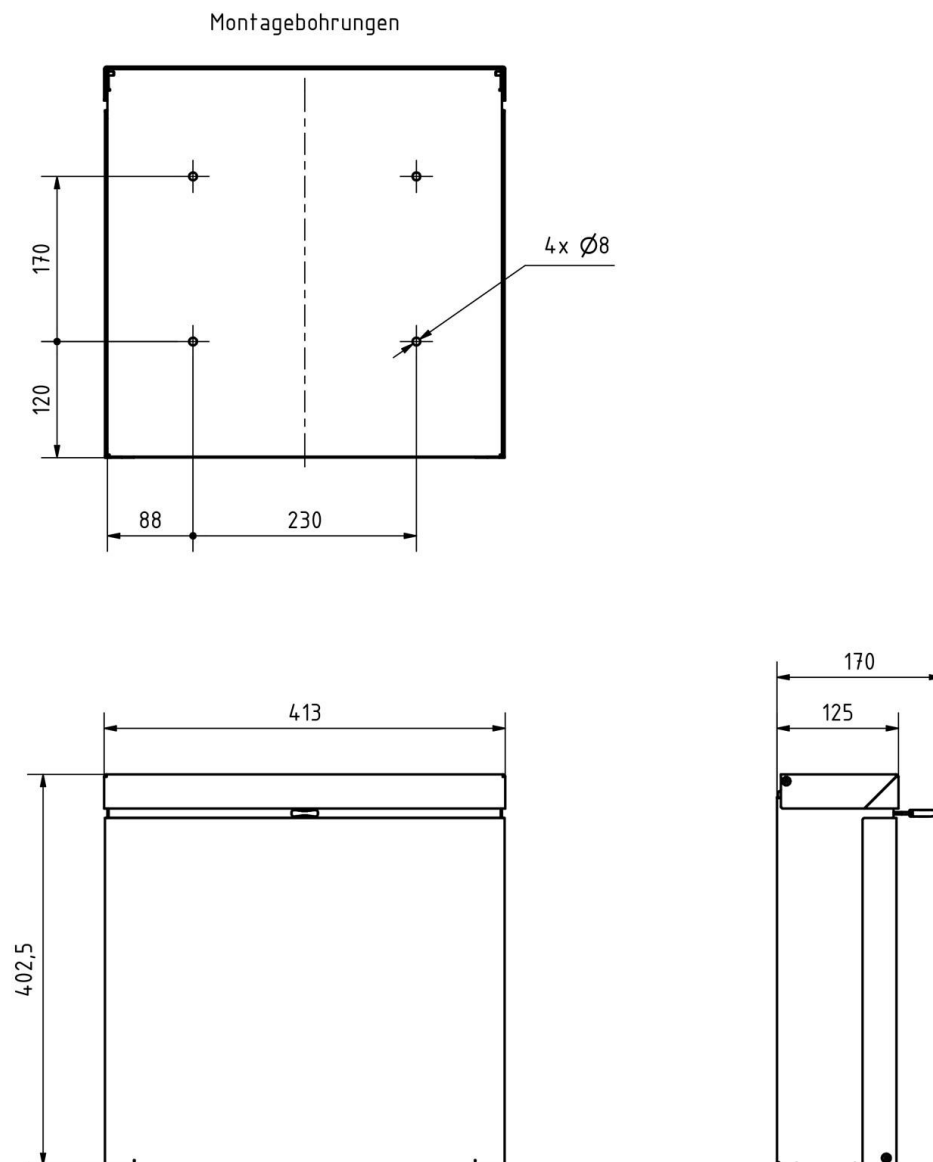
Product properties

Material	Steel, galvanised, Stainless steel V2A 1.4301
Series	BRENTANO
House number	House number as laser engraving
Surface/colour	RAL 7016 anthracite grey, Brushed
Name labelling	Laser-engraved
Removal of mail	On the front
Number of boxes	with 1 letterbox
Boxes by volume	Large > 16 litres
Mounting type	Surface-mounted

Dimensions

Height of single box in mm	400,0
Width of single box in mm	400,0
Capacity in litres	19,5
Height of letterbox slot in mm	35,0
Width of letter slot in mm	360,0
Total width in mm	410,0
Depth in mm	125,0
Weight in kg	11
Delivery condition	Lieferung erfolgt komplett montiert

Drawing



More images



