

# 4-post letterbox Design BASIC Plus 381X ST-R with bell box & newspaper compartment - stainless steel | 150mm depth | Stainless steel, ground | with 4 letterboxes

**Product number** 381X-VA-4-SP-ZFG-150



## Product description

### 4-post letterbox design BASIC Plus 381X ST-R with bell box & newspaper compartment closed - polished V2A stainless steel

Modern free-standing letterbox for 4 parties - made in Germany by Briefkasten Manufaktur.

The complete letterbox system is made of weather-resistant stainless steel V2A 1.4301, polished. The very high-quality workmanship and the well thought-out concept make this free-standing letter box our top seller. A rain drainage edge for optimum water protection, a continuous rubber lip for quiet insertion, the solid interchangeable nameplate, a practical post holder and the very robust lock characterise this free-standing letterbox. The side panelling with protruding rain cover made of V2A stainless steel offers optimum protection against the weather and guarantees a very long service life.

The letterbox systems in the BASIC Plus collection are characterised by the consistent use of V2A stainless steel. The result is a very long service life and sustainability. The design has been developed by our own engineers with a view to high flexibility and modularity, simple spare parts assembly and uncomplicated self-assembly. Spare parts are directly available for all BASIC Plus systems.

- **4-post letterbox made of V2A stainless steel, polished**
- The system is manufactured by Briefkasten Manufaktur. German quality production "Made in Germany".
- The letterbox complies with DIN/EN 13724. Insertion size (3.5 cm x 32.5 cm) for C4 landscape, large letters also fit in here without creasing.
- Insertion flap with sound-absorbing rubber seal for very quiet insertion of mail.
- The door can be opened from left to right.
- Newspaper compartment with door and toggle lock made of stainless steel V2A 1.4301, polished. Laser inscription "ZEITUNG" grey. Dimensions: 355x165x100/150mm.
- Incl. 2 keys with key number, changeable name plate (type 2) under the flap and post holder.
- Large capacity thanks to optional letterbox depth +50 mm = approx. 17 litres. Suitable for companies and households with very high mail volumes.
- Incl. side panelling + rain cover made of V2A stainless steel, polished.
- **Bell box made of V2A stainless steel, polished**
- Intercom hole with universal adapter. (Intercom system/ built-in loudspeaker not included in scope of delivery). Also available without speech perforation.
- Universal adapter is suitable for all commercially available built-in loudspeakers (Siedle, Ritto, TCS, Busch-Jäger, Gira, Legrand Bticino, ELCOM, Auerswald, Comelit and many more).
- Round stainless steel bell button, max. switching capacity: 5A @ 250V AC, IP 65 (pressure force limitation).
- Anti-vandalism - The nameplate is indentation-proof and impact-resistant, the plastic is flame-retardant.
- Cable access: Ø 10.4 mm (on the right-hand side). Invisible cable routing through the stand element.
- The stand elements are made of 42.4 mm V2A stainless steel 1.4301, polished for screw mounting or setting in concrete.

## Important information

Camera or intercom preparation

**The intercom systems must be connected by an electrician. Please contact your trusted electrician for planning, fitting and installation.**

Water protection

The mail is only protected against moisture and dirt when it is fully inserted and the flap is closed. Under certain extreme weather conditions, water may still enter (up to 1ccm according to DIN EN 13724). This is not a reason for complaint.

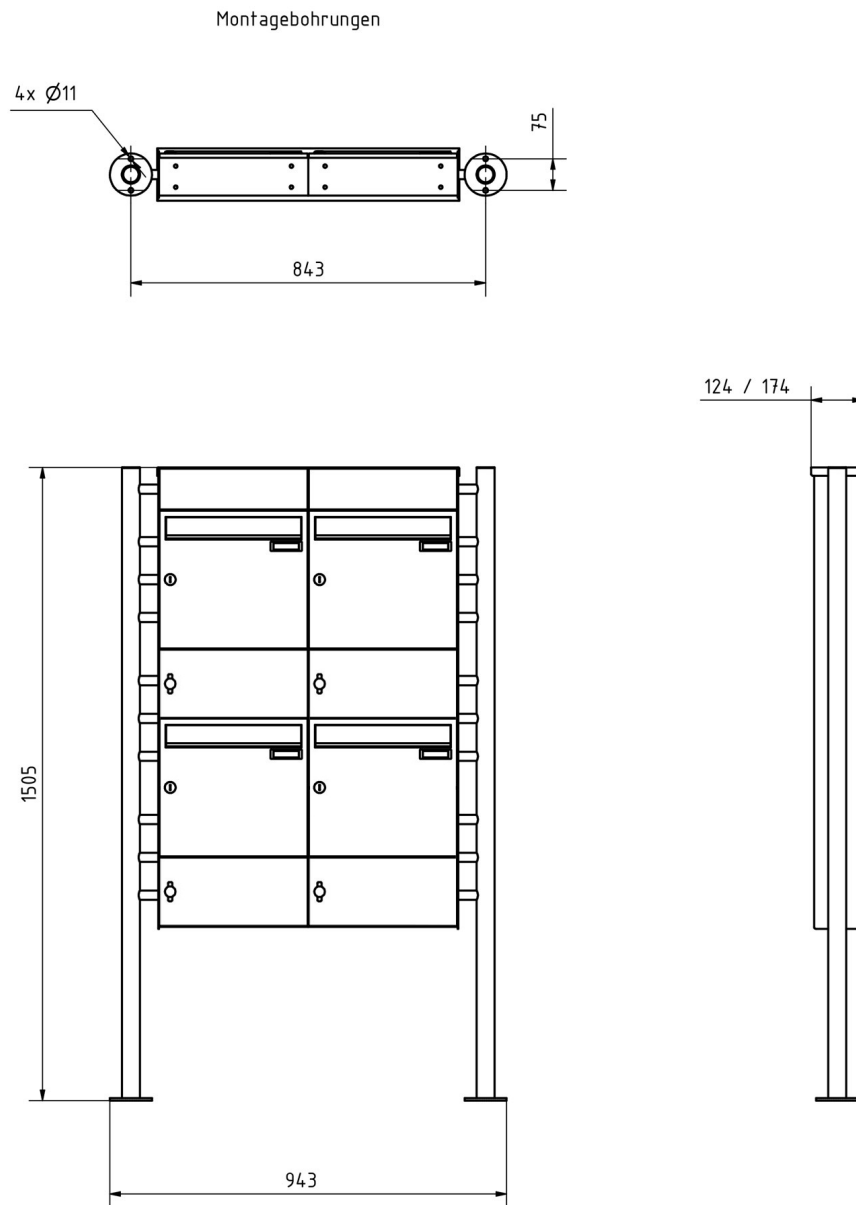
## Product properties

<b>Series</b>	BASIC
<b>Number of bell push buttons</b>	4 buttons
<b>Functions</b>	Newspaper compartment, Light button, Camera, Intercom
<b>Functional box prepared for manufacturer</b>	GIRA, Busch Jaeger, Siedle, STR Elektronik, ELCOM, TCS, Ritto, ALGO, Telegärtner, Auerswald, Legrand Bticino, Comelit
<b>Number of letterboxes</b>	with 4 letterboxes
<b>Name labelling</b>	Nameplate
<b>Mounting type</b>	Free-standing
<b>Material</b>	Stainless steel V2A 1.4301
<b>Removal of mail</b>	On the front
<b>Surface/colour</b>	Brushed
<b>Boxes by volume</b>	Large > 16 litres

## Dimensions

<b>Height of single box in mm</b>	330,0
<b>Width of single box in mm</b>	355,0
<b>Capacity in litres</b>	12,0   17,0
<b>Height of letterbox slot in mm</b>	35,0
<b>Width of letter slot in mm</b>	325,0
<b>Height of letterbox in mm</b>	1090,0
<b>Width of letterbox system in mm</b>	710,0
<b>Overall height in mm</b>	1500,0
<b>Total width in mm</b>	890,0
<b>Depth in mm</b>	100,0   150,0
<b>Weight in kg</b>	50
<b>Delivery condition</b>	Supplied in blocks, stand elements / letterbox divided

## Drawing



## More images



