

Stainless steel fence mailbox designer model BIG - Clean Edition - RAL of your choice - INDIVIDUAL

Product number 515BR-VAR



Product description

Stainless steel fence letterbox designer model BIG - rear removal - RAL colour with bell & name lettering, optional camera, intercom system

High-quality stainless steel letterbox from Briefkasten Manufaktur in an extra-large format. A real eye-catcher among letterboxes. Clear lines and a no-frills design characterise this designer letterbox. The post is inserted at the front and residents can remove their mail from the back. Our products have a high quality, reliable functionality and their own identity. Made by Briefkasten Manufaktur.

- Designer stainless steel fence letterbox made of 2 mm stainless steel V2A, powder-coated in RAL textured matt.
- Rear mail removal door 240 mm x 300 mm, opens from top to bottom. Incl. 2 keys with key number.
- Mail slot from the front, dimensions: W 35 cm x H 6.3 cm, C4 landscape. Very large letters fit in here without creasing. Attention, no removal protection!
- With built-in damping elements that allow the flap to close slowly and quietly.
- Optional replaceable stainless steel nameplate with laser inscription or Plexiglas nameplate.
- 8-12V DC short-stroke bell push with LED ring lighting (blue, white, red or green). The bell button lighting cannot be supplied via the control unit. It must be connected to an additional power supply.
- An 8-12V DC short-stroke light button with pictogram is available as an option.
- Preparation (built-in loudspeaker not included) for intercom system possible.
- Optionally with universal adapter for all commercially available built-in loudspeakers.
- Optional preparation (camera not included in scope of delivery) for a camera.
- Optional house number approx. 70mm high (max. 3 digits) with energy-saving LED lighting 12V DC approx. 50mA / 1W, white. Incl. EVN LED power supply unit / transformer IP65 12V/DC 0.1-4W for the LED lighting (house number, bell button and nameplate if selected).
- Surface-mounted box dimensions: H 710 mm x W 410 x D 100 without perforation. The perforation for fixing must be provided by the customer.
- Surface-mounted box made of V2A stainless steel, ground on all sides.

Camera or call station preparation

We recommend that the electrical installation is always carried out by an electrician.

We offer the preparation of cameras and intercoms from various manufacturers for our letterboxes. The preparation does not include any end devices, but only the provision of screw mounts, drill holes and perforations. So that you can mount your end device without any problems.

Water protection

To achieve optimum water protection for your mail, the letterbox or letterbox system should be located under a canopy if possible.

The mail is only protected from water if it is fully inserted in the box and the flap is closed. Mail that is not fully inserted allows moisture and dirt to penetrate the letterbox. It is therefore necessary to plan sufficiently dimensioned letterboxes for the upcoming requirements. In certain extreme weather conditions, water can still enter (up to 1ccm according to DIN EN 13724). This is not a reason for complaint.

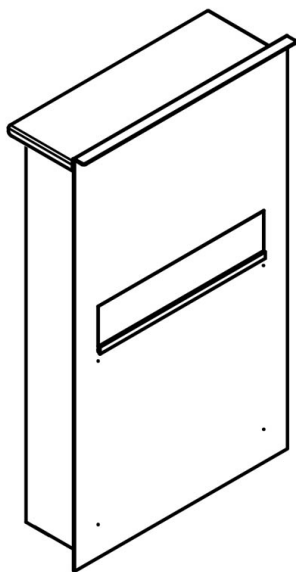
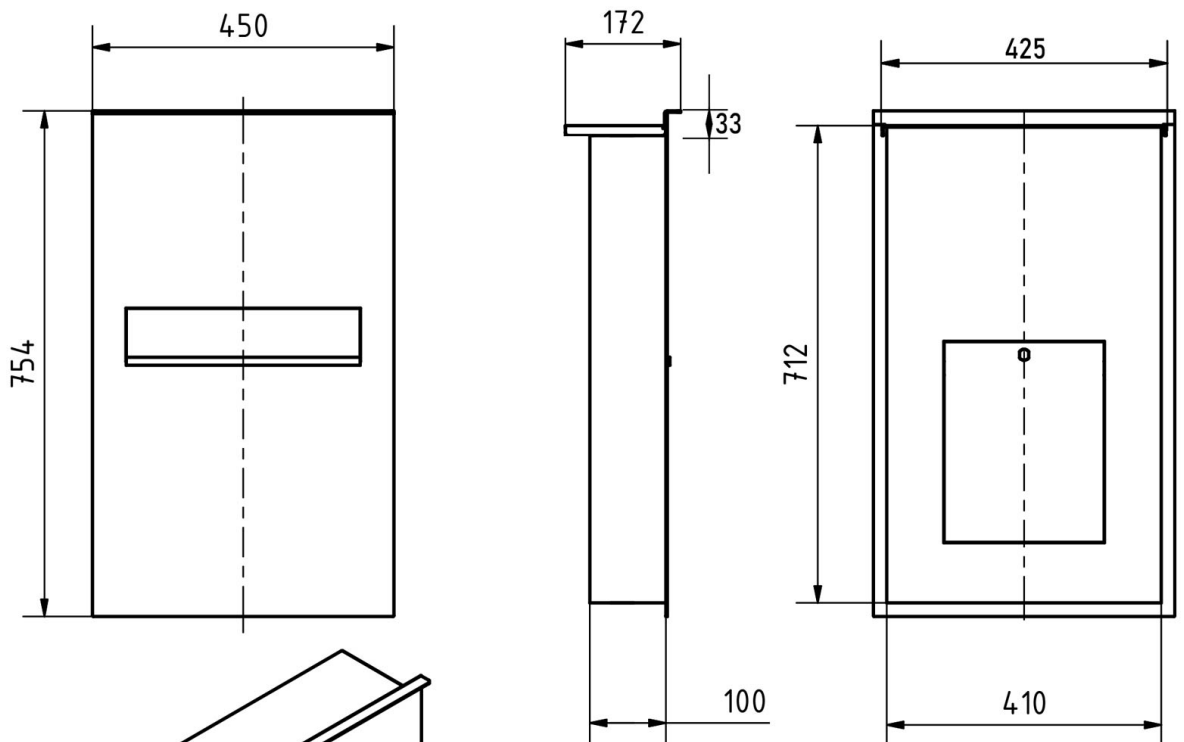
Product properties

| | |
|------------------------|--|
| Surface/colour | RAL 9005 deep black, RAL 3004 crimson red, DB 703 iron mica, RAL 7016 anthracite grey, RAL of your choice (according to colour table), RAL 9007 grey aluminium, RAL 9016 traffic white |
| Series | DESIGNER |
| Functions | Newspaper compartment |
| Boxes by volume | Normal > 10 litres |
| Material | Stainless steel V2A 1.4301 |
| Mounting type | Fence |
| Number of boxes | with 1 letterbox |
| Removal of mail | On the back |

Dimensions

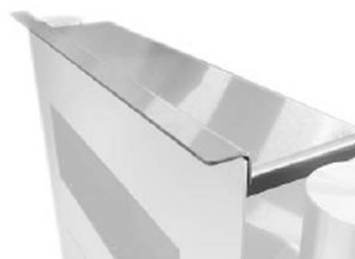
| | |
|---------------------------------------|-----------------------|
| Height of single box in mm | 710,0 750,0 |
| Width of single box in mm | 410,0 450,0 |
| Capacity in litres | 21 |
| Height of letterbox slot in mm | 63,0 |
| Width of letter slot in mm | 350,0 |
| Depth in mm | 100,0 |
| Weight in kg | 32 |
| Delivery condition | Delivery is assembled |

Drawing

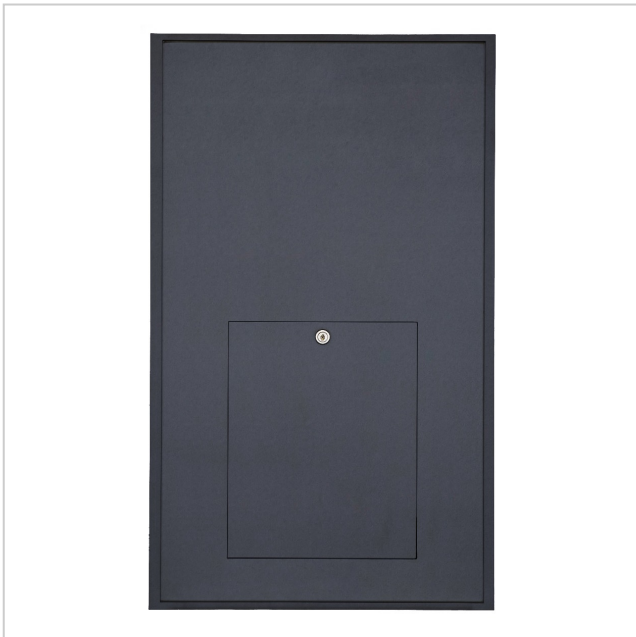


Regendach "DESIGNER"

Für Aufputz-, Zaun-, und Standbriefkästen der Kollektion Designer liegt ein Regendach bei. Dieses ist selbstklebend und nach erfolgreicher Montage oben auf dem Briefkasten aufzusetzen. Achten Sie dabei auf eine genaue Ausrichtung!



More images



Eingebaute Dämpfungselemente lassen die
Einwurfklappe langsam und leise schließen

