

6er 2x3 letterbox system free-standing GOETHE ST-Q-400 - RAL of your choice | 400mm depth | with 6 letterboxes (2x3)

Product number 215-STQ-6-400



Product description

6-piece 2x3 free-standing letterbox system GOETHE ST-Q-400 - RAL of your choice

Freestanding 6-piece letterbox system with horizontal boxes 400 mm deep and elegant rectangular stand elements. The modern GOETHE letterbox is ideal for the sophisticated entrance area. The linear design without a visible lock makes this letterbox look particularly elegant.

The dimensions of the individual boxes allow for a capacity of approx. 32 litres, while the large slot guarantees no crumpled mail, even with DIN C4 envelopes and magazines or after several days of absence. The innovative push-key lock is concealed inside the letterbox. The key is simply inserted into the existing opening (no turning required) and the door opens. With the arrangement of the lock, this letterbox is designed in such a way that the removal door prevents the mail from falling towards you. The water drainage edge ensures that the mail inside is optimally protected from the weather. The insertion flap is fitted with high-quality axle dampers, guaranteeing quiet closing and preventing annoying rattling caused by the weather. The interchangeable Plexiglas name plates can be conveniently operated from the front; for an optimum look, we recommend the flush-fitting name plate with laser engraving (see accessories). The 2nd nameplate is fitted with a Yes/No advertising insert.

The letterbox systems in the GOETHE collection are characterised by the consistent use of stainless steel and aluminium. The result is a very long service life and sustainability. The design has been developed by our own engineers with a view to high flexibility and modularity, simple spare parts assembly and uncomplicated self-assembly. Spare parts for all GOETHE systems are available directly in our shop.

Thanks to the design, self-assembly is uncomplicated.

Protected utility model according to DPMA file number DE: 20 2021 101 679.5

- 6-post letterbox made of stainless steel and aluminium.
- Letterboxes made of stainless steel 1.4016 (non-rusting magnetic stainless steel), powder-coated in RAL colour of your choice.
- Quality production - Made in Germany by Briefkasten Manufaktur Lippe.
- Innovative push-key lock with 2 keys per party.
- Letters are inserted and removed from the front. Insertion flap with high-quality axle dampers for very quiet mail insertion.
- The letterboxes comply with DIN/EN 13724. Insertion size (3.5 cm x 36.0 cm) for C4 across, even large letters fit in here without creasing.
- Removal doors open from top to bottom. This prevents the mail from falling towards you.
- Plexiglas nameplate for name labelling and 2nd nameplate advertising yes/no per party.
- Optimum rain protection thanks to rain run-off edges and a rain cover made of 3 mm aluminium AlMg3 W19, powder-coated in RAL of your choice.
- Side cladding made of 3mm aluminium AlMg3 W19, powder-coated in RAL of your choice.
- Rear panel made of 1mm stainless steel V2A 1.4301, powder-coated in RAL of your choice.
- The W 40 mm x D 80 mm uprights are made of 2 mm stainless steel V2A 1.4301, powder-coated in RAL colour for setting in concrete or screw mounting.

Important information:

To achieve optimum water protection for your mail, the letterbox or letterbox system should be located under a canopy if possible.

The mail is only protected from water if it is completely placed in the box and the flap is closed. Mail that is not fully inserted allows moisture and dirt to enter the letterbox. This system is protected against the ingress of water in accordance with DIN EN 13724. Water ingress is not a reason for complaint.

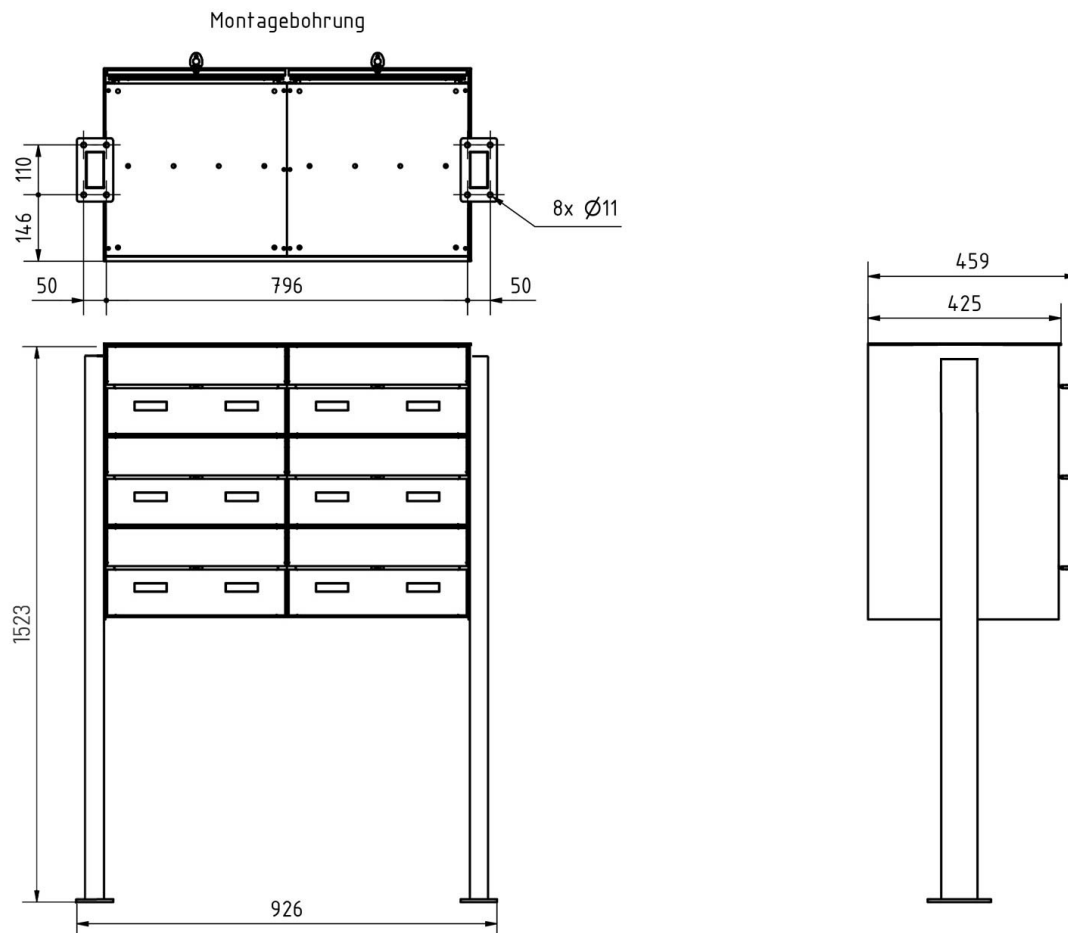
Product properties

Surface/colour	RAL 9005 deep black, RAL 3004 crimson red, DB 703 iron mica, RAL 7016 anthracite grey, RAL of your choice (according to colour table), RAL 9007 grey aluminium, RAL 9016 traffic white
Series	GOETHE
Number of boxes	with 6 letterboxes
Name labelling	Nameplate
Material	Aluminium AlMg3 W19, Stainless steel V2A 1.4301, Stainless steel 1.4016 (non-rusting magnetic stainless steel)
Mounting type	Free-standing
Removal of mail	On the front
Boxes by volume	Large > 16 litres

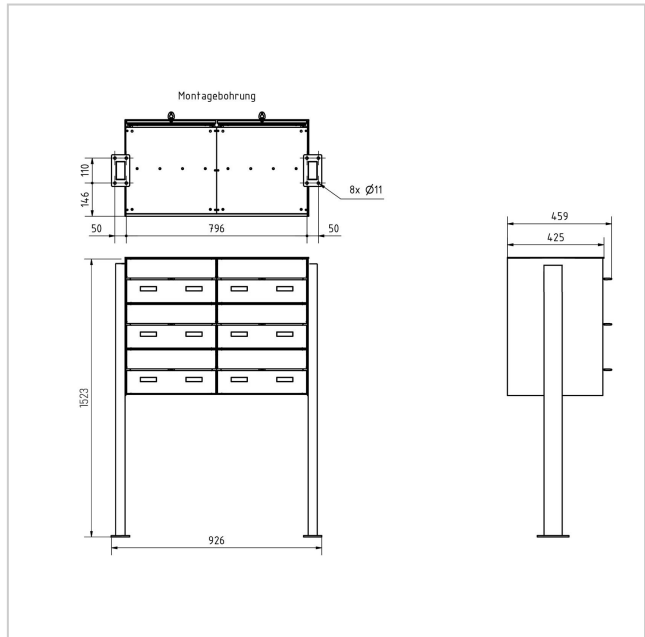
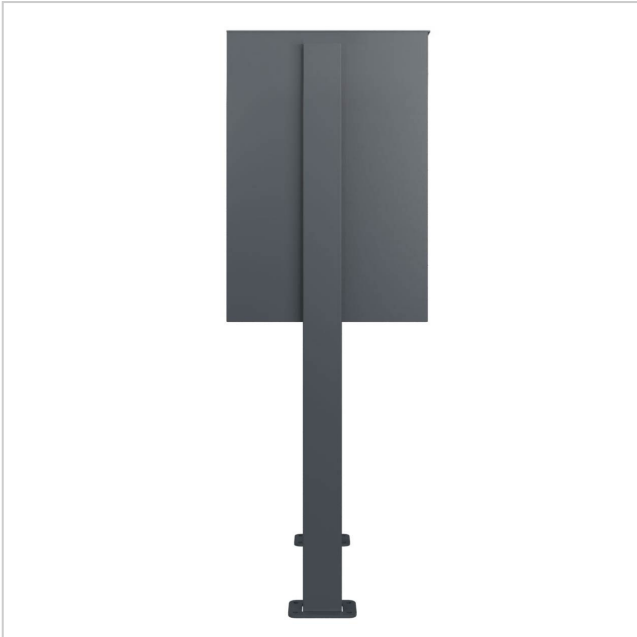
Dimensions

Width in mm	1
Height in mm	1
Height of single box in mm	200,0
Width of single box in mm	400,0
Capacity in litres	32
Height of letterbox slot in mm	35,0
Width of letter slot in mm	360,0
Height of letterbox in mm	600,0
Width of letterbox system in mm	800,0
Overall height in mm	1200,0 1500,0 1700,0 + 23,0
Total width in mm	888,0
Depth in mm	400.0 + 25.0 Rain roof
Weight in kg	85
Delivery condition	Supplied in blocks, stand elements / letterbox divided

Drawing



More images





Unser TIPP

! Flächenbündiges Namensschild - 2-teilig - Trägerblech + Namensschild
Artikel: 789-E-2T (siehe Zubehör)



Push-Key-Schloss Nur noch stecken!

