

Design flush-mounted letterbox GRIMM - colour of your choice with DoorBird video intercom right | Right | DoorBird | ? Colour of your choice | Flush-mounted

Product number 562-UP-SPR-1-SF-DB



Product description

Design letterbox GRIMM® with DoorBird video intercom - A masterpiece of letterbox manufacturing

The GRIMM flush-mounted designer letterbox combines modern design with first-class workmanship - ideal for discerning builders and architects looking for an elegant solution for integrating DoorBird. Manufactured from high-quality stainless steel and completely "Made in Germany" by the letterbox manufacturer Lippe, this model stands for durability, functionality and a stylish look. The powder-coated front panel made of 2 mm stainless steel V2A (#####) impresses with its timeless appearance and high corrosion resistance.

At the centre of this system is the DoorBird IP Video Door Station D2100E or D1100E, which can be optimally integrated into modern smart home solutions. It offers live video transmission, intercom function and mobile control via the DoorBird app. Whether at home or on the move - you can see and speak to visitors at your front door at any time using your smartphone. Classic components such as doorbells, electric door openers or gate operators can be easily integrated and controlled via the system.

The GRIMM® letterbox is not only a visual highlight, but also at the forefront in terms of functionality and quality. Thanks to the innovative push-key lock, the letterbox can be operated easily and conveniently with one hand. Open the door with one push and close the door without using a key. The lock is optimally protected from the weather. The letterbox also features an intelligent removal system: the door opens from top to bottom, ensuring that the mail remains securely in the box and cannot fall towards you. Mail is also conveniently inserted from the front, with high-quality axle dampers ensuring that the flap closes gently. The GRIMM is particularly unique thanks to its double box system: the flush-mounted box can be installed during the shell construction phase, while the front panel is only fitted once the construction work has been completed - for maximum flexibility in the future and protection from dirt and dust during the construction phase. The plaster box is made of stainless steel and has pre-punched cable inlets on all sides to allow easy electrical installation.

Thanks to the DIN/EN 13724 standard, the GRIMM is ideal for large letters in C4 format, which can be inserted without creasing. The GRIMM® letterbox impresses with its durable quality, timeless design and sophisticated functionality.

- High-quality letterbox made entirely of stainless steel for flush mounting.
- Front panel made of 2 mm stainless steel V2A 1.4301, powder-coated in the colour of your choice.
- Quality production - Made in Germany by Briefkasten Manufaktur Lippe.
- Integrated DoorBird IP video door station - modern door communication with your mobile phone. Compatible with many smart home systems & existing building technology.
- Innovative push-key lock including 2 keys with key number, convenient locking without a key, optimally protected from the weather.
- The removal door with opening limiter opens from top to bottom to prevent mail from falling towards you.
- Front mail slot with high-quality axle dampers for very quiet mail insertion.
- DIN/EN 13724-compliant letterbox, insertion size (3.5 cm x 32.5 cm) for C4 landscape - even large letters remain intact. Additional stainless steel removal protection integrated.
- Optimum weather protection thanks to offset cover.
- Double box system: Ideal for flush mounting. The cover can be easily installed once the construction work is complete.
- Plaster box made of stainless steel ##### (stainless, magnetic stainless steel) with pre-punched cable inlets on all sides.

Important information:

To achieve optimum water protection for your mail, the letterbox or letterbox system should be located under a canopy if possible.

The mail is only protected from water if it is completely placed in the box and the flap is closed. Mail that is not fully inserted allows moisture and dirt to enter the letterbox. This system is protected against the ingress of water in accordance with DIN EN 13724. Water ingress is not a reason for complaint.

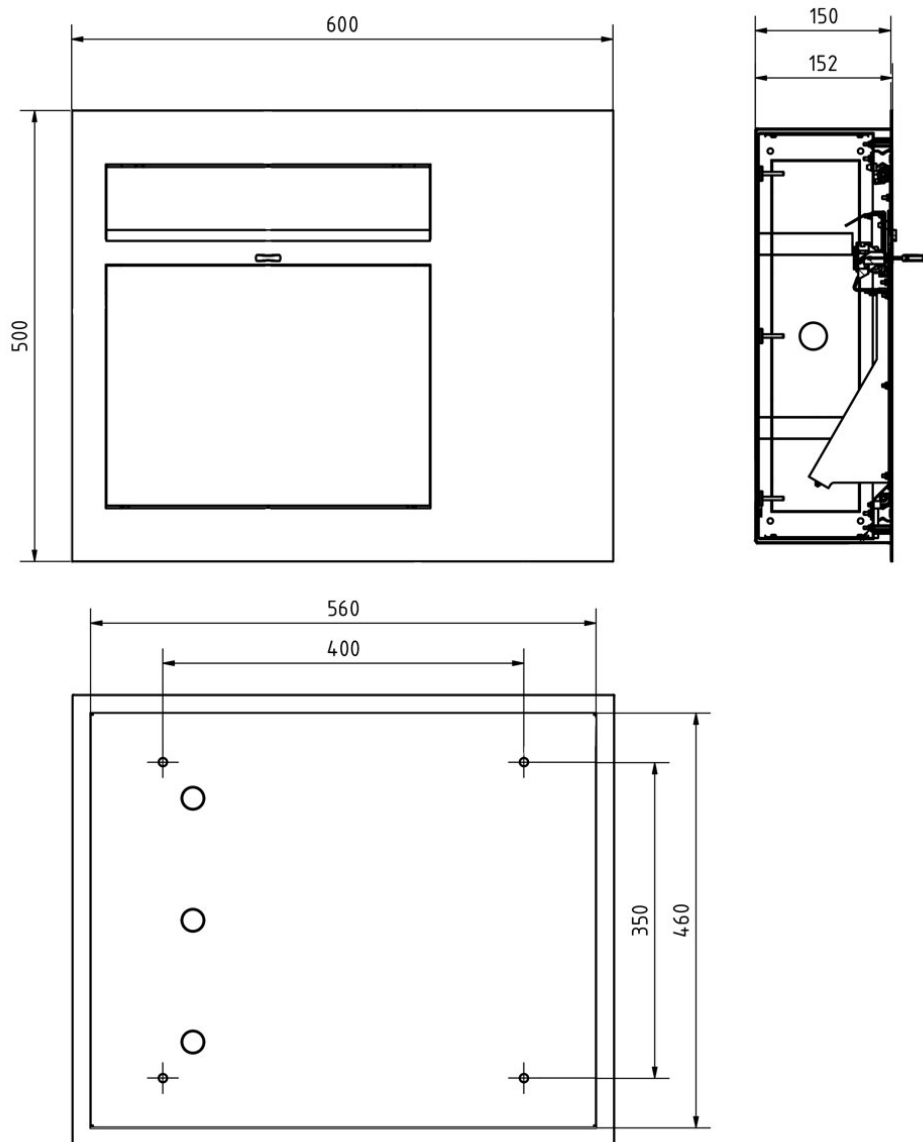
Product properties

Surface/colour	RAL 9005 deep black, RAL 3004 crimson red, DB 703 iron mica, RAL 7016 anthracite grey, RAL of your choice (according to colour table), RAL 9007 grey aluminium, RAL 9016 traffic white
Series	GRIMM
Connection technology	2-wire, LAN
Number of bell push buttons	1 button
Functions	Camera, Intercom, Fingerprint, Keypad
Functional box prepared for manufacturer	DoorBird
Material	Stainless steel V2A 1.4301, Stainless steel 1.4016 (non-rusting magnetic stainless steel)
House number	House number as laser engraving, House number as laser cut, illuminated
Name labelling	Laser-engraved
Removal of mail	On the front
Number of boxes	with 1 letterbox
Boxes by volume	Large > 16 litres
Mounting type	Flush-mounted

Dimensions

Height of single box in mm	460,0
Width of single box in mm	560,0
Capacity in litres	26,0
Height of letterbox slot in mm	35,0
Width of letter slot in mm	325,0
Height of letterbox in mm	External dimension 500.0 installation dimension 460.0
Width of letterbox system in mm	External dimension 600.0 installation dimension 560.0
Depth in mm	150,0
Weight in kg	19
Delivery condition	Delivery is assembled

Drawing



More images

