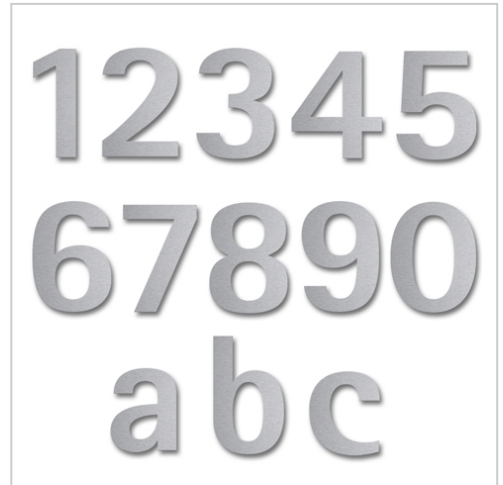


Stainless steel house number Klopstock | a (lower case) | 150mm | Stainless steel, ground

Product number 528-VA-11



Product description

Stainless steel house number Klopstock

Choosing the right font is crucial for a house number. Optimum legibility is the top priority. However, the house number is also an important design element. There are two 30 mm long welding studs with threads on the back. After drilling the holes and inserting the plugs, all you need to do is attach the numbers/letters.

Made in Germany, manufactured in Bad Salzungen

- House number made of stainless steel V2A 1.4301.
- Fastening to the wall is carried out using welding studs, which are simply inserted into the dowel holes.
- Material thickness 2 mm.
- Supplied with dowels (S6).

Product properties

Mounting type Plug-in bolt

Material Stainless steel V2A 1.4301

Surface/colour Brushed

Abmessungen

Height in mm: max. 150

Depth in mm: 2,0

Weight in kg: 0,5

More images



12345
67890
a b c

