

Stainless steel interior door letterbox BIG - RAL of your choice - Suitable for letter slot 410x140mm | ? Colour of your choice

Product number 205ITB-VAR-B



Product description

Stainless steel inside door letterbox BIG - RAL of your choice - Suitable for letter slot 410x140mm

High-quality interior door letterbox made entirely of 1.5 mm stainless steel V2A 1.4301, powder-coated. Mail is inserted from the front, residents can remove their mail from the rear. The letterbox can be integrated into any wall in combination with the letter slot 555 (410x140mm), which does not exceed a thickness of 20mm. The installation of the system is very simple and is carried out using 4 screws.

The dimensions allow a capacity of approx. 16 litres, the large insertion guarantees no crumpled mail even with DIN C4 envelopes and magazines or after several days of absence. With the lock at the top, this letter box is designed so that the removal door prevents the post from falling towards you. This letterbox spares no comparison, extremely high-quality workmanship and precision. Every component of this letter box, including the rear panels and internal components, is made of V2A 1.4301 stainless steel.

- Inner door of letterbox made of 1.5 mm stainless steel V2A 1.4301, powder-coated in RAL colour.
- Quality production - Made in Germany.
- Optimum rain protection thanks to rain guard edge and water protection plate on the inside.
- Stainless steel cylinder lock with dust protection flap & 2 keys.
- Removal door opens from top to bottom. So the mail cannot fall towards you.
- Suitable for letterboxes: 555-BE-35, 555-BE-35-VAR

Important information:

Mail is only protected from water if it is fully inserted in the box and the flap is closed. Mail that is not fully inserted allows moisture and dirt to penetrate the letterbox. It is therefore necessary to plan sufficiently dimensioned letterboxes for the upcoming requirements. Under certain extreme weather conditions, water can still enter (up to 1ccm according to DIN EN 13724). This is not a reason for complaint.

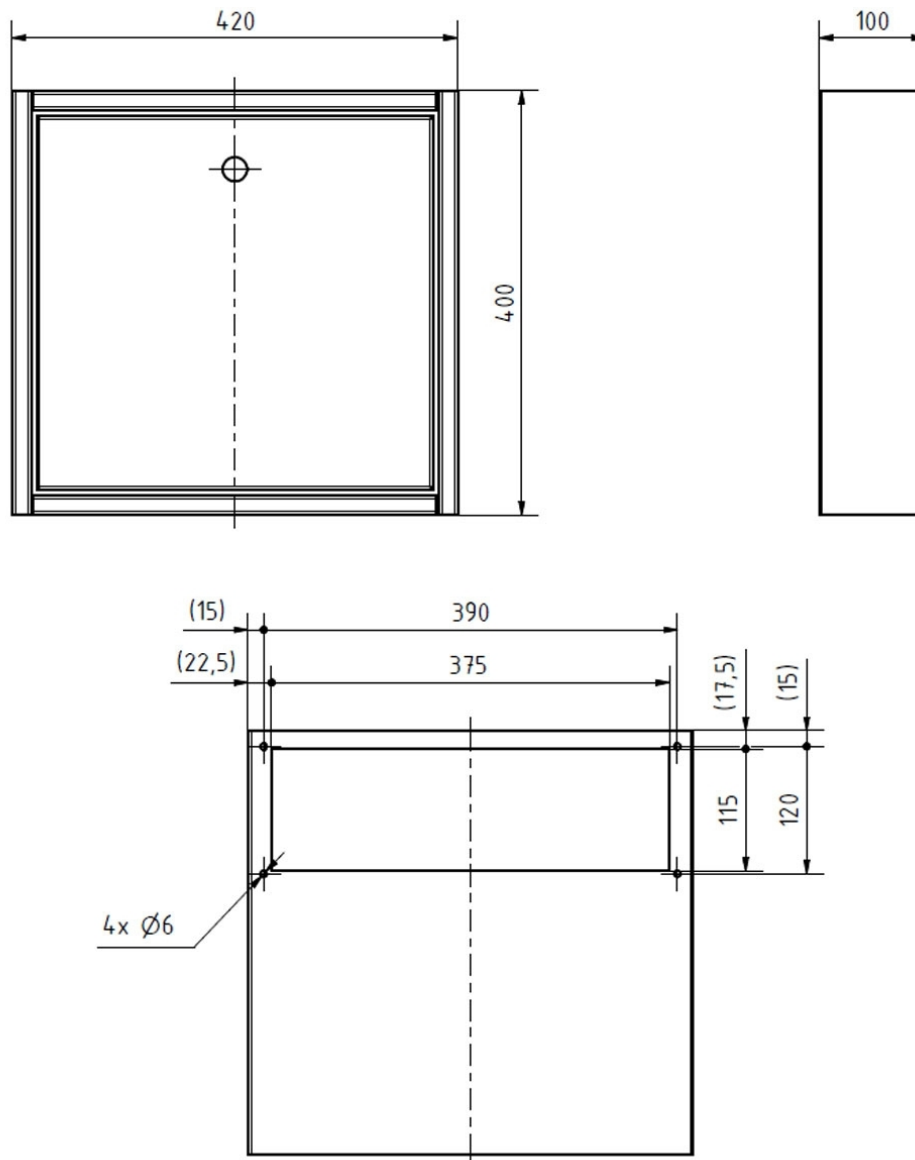
Product properties

Surface/colour	RAL 9005 deep black, RAL 3004 crimson red, DB 703 iron mica, RAL 7016 anthracite grey, RAL of your choice (according to colour table), RAL 9007 grey aluminium, RAL 9016 traffic white
Mounting type	Screw
Boxes by volume	Normal > 10 litres
Number of letterboxes	with 1 letterbox
Removal of mail	On the back

Dimensions

Height of single box in mm	400,0
Width of single box in mm	420,0
Capacity in litres	16
Depth in mm	100,0
Weight in kg	7
Delivery condition	Delivery is assembled

Drawing



More images



