

Stainless steel fence letterbox designer model BIG - rear removal - GIRA System 106 - 3-gang prepared

Product number 515BR-V-GI106



Product description

Stainless steel fence mailbox designer model BIG - rear removal - GIRA System 106 - 3-gang prepared

High-quality fence letterbox from the Briefkasten Manufaktur brand in extra-large format. The Gira System 106 can be used seamlessly in a flush-mounted design. The preparation is intended for 3 GIRA 106 system modules. The modules can be flush-mounted using the simple mounting system (surface-mounted housing 5503910 required!).

This is a real eye-catcher among letterboxes. Clear lines and no-frills design characterise the designer letterbox with GIRA System 106. Our products have a high quality, reliable functionality and their own identity. Made by Briefkasten Manufaktur.

- Designer stainless steel fence letterbox made of 2 mm V2A stainless steel.
- Rear mail removal door 240 mm x 300 mm, opens from top to bottom. Incl. 2 keys with key number.
- Post insertion from the front, insertion dimensions: W 32 cm x H 6.3 cm, C4 landscape. Very large letters fit in here without creasing. Attention no removal protection!
- **Now with built-in damping elements that allow the flap to close slowly and quietly.**
- Surface-mounted box dimensions: H 710 mm x W 410 x D 100 without fixing holes (must be provided by customer). ATTENTION the front panel protrudes 2 cm all round.
- Surface-mounted box made of V2A stainless steel, polished on all sides.
- **WITHOUT GIRA system components!**

Important information

Camera or intercom preparation

The intercom systems must be connected by an electrician. Please contact your trusted electrician for planning, fitting and installation.

Water protection

To achieve optimum water protection for your mail, the letterbox or letterbox system should be located under a canopy if possible.

The mail is only protected from water if it is fully inserted in the box and the flap is closed. Mail that is not fully inserted allows moisture and dirt to penetrate the letterbox. It is therefore necessary to plan sufficiently dimensioned letterboxes for the upcoming requirements. In certain extreme weather conditions, water can still enter (up to 1ccm according to DIN EN 13724). This is not a reason for complaint.

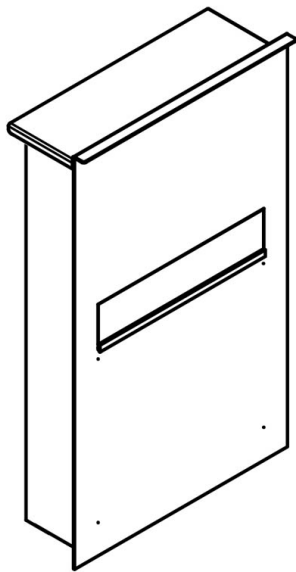
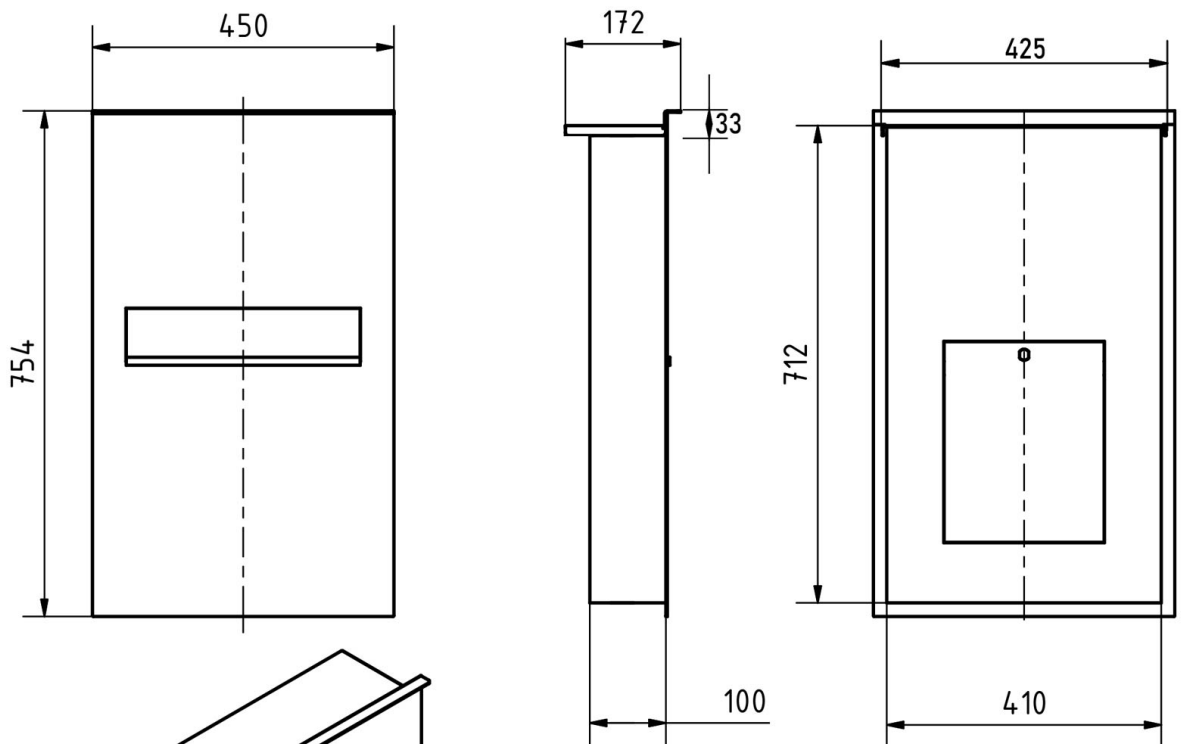
Product properties

Series	DESIGNER
Functions	Newspaper compartment
Material	Stainless steel V2A 1.4301
Mounting type	Fence
Number of boxes	with 1 letterbox
Surface/colour	Brushed
Boxes by volume	Large > 16 litres
Removal of mail	On the back

Dimensions

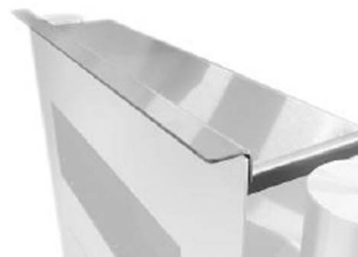
Height of single box in mm	710,0 750,0
Width of single box in mm	410,0 450,0
Capacity in litres	21
Height of letterbox slot in mm	63,0
Width of letter slot in mm	350,0
Depth in mm	100,0
Weight in kg	32
Delivery condition	Delivery is assembled

Drawing



Regendach "DESIGNER"

Für Aufputz-, Zaun-, und Standbriefkästen der Kollektion Designer liegt ein Regendach bei. Dieses ist selbstklebend und nach erfolgreicher Montage oben auf dem Briefkasten aufzusetzen. Achten Sie dabei auf eine genaue Ausrichtung!



More images

