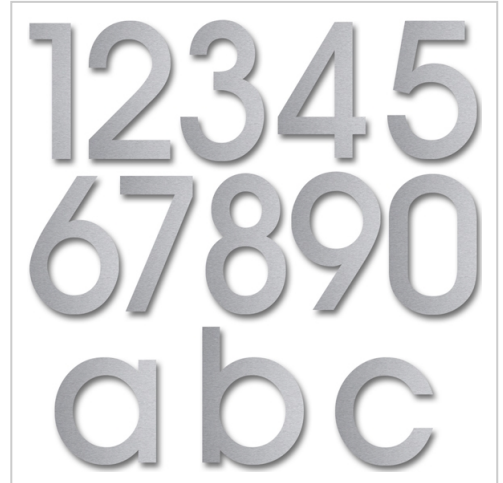


Stainless steel house number Hölderlin | c (lower case) | 300mm | Stainless steel, ground

Product number 528-01-300-VA-13



Product description

Stainless steel house number Hölderlin

Choosing the right font is crucial for a house number. Optimum legibility is the top priority. However, the house number is also an important design element. There are two 30 mm long threaded welding studs on the back. After drilling the holes and inserting the plugs, all you need to do is attach the numbers/letters.

Made in Germany, manufactured in Bad Salzuflen

- House number made of stainless steel V2A 1.4301.
- Fastening to the wall is carried out using welding studs, which are simply inserted into the dowel holes.
- Material thickness 2 mm.
- Supplied with dowels (S6).

Product properties

Mounting type Plug-in bolt

Material Stainless steel V2A 1.4301

Surface/colour Brushed

Dimensions

Height in mm max. 300

Depth in mm 2,0

Weight in kg 0,5

More images

