

# Design pedestal letterbox GOETHE ST-R - RAL of your choice | with 1 letterbox

**Product number** 215-STR-1



## Product description

### Design pedestal letterbox GOETHE ST-R - RAL colour of your choice

High-quality, free-standing letterbox with elegant round tube stand elements. The modern GOETHE letterbox is ideal for sophisticated entrance areas. The linear design without a visible lock makes this letter box look particularly elegant.

The dimensions of the individual box allow for a capacity of approx. 16 litres, while the large slot guarantees no crumpled mail, even with DIN C4 envelopes and magazines or after several days of absence. The innovative push-key lock is concealed inside the letterbox. The key is simply inserted into the existing opening (no turning required) and the door opens. With the arrangement of the lock, this letterbox is designed in such a way that the removal door prevents the mail from falling towards you. The water drainage edge ensures that the mail inside is optimally protected from the weather. The insertion flap is fitted with high-quality axle dampers, guaranteeing quiet closing and preventing annoying rattling caused by the weather.

The letterbox systems in the GOETHE collection are characterised by the consistent use of stainless steel and aluminium. The result is a very long service life and sustainability. The design has been developed by our own engineers with a view to high flexibility and modularity, simple spare parts assembly and uncomplicated self-assembly. Spare parts for all GOETHE systems are available directly in our shop.

Thanks to the design, self-assembly is uncomplicated.

#### Protected utility model according to DPMA file number DE: 20 2021 101 679.5

- Free-standing letterbox made of stainless steel and aluminium.
- Letterbox made of stainless steel 1.4016 (non-rusting magnetic stainless steel), powder-coated in RAL colour of your choice.
- Quality production - Made in Germany by Briefkasten Manufaktur Lippe.
- Innovative push-key lock with 2 keys.
- Letter insertion and removal from the front. Insertion flap with high-quality axle dampers for very quiet mail insertion.
- The letterbox complies with DIN/EN 13724. Insertion size (3.5 cm x 36.0 cm) for C4 across, even large letters fit in here without creasing.
- Removal door opens from top to bottom. So the mail cannot fall towards you.
- Optional name labelling approx. 15-20 mm high.
- Optional house number labelling approx. 70-80 mm high.
- Optimum rain protection thanks to rain run-off edges and a rain canopy made of 3 mm aluminium AlMg3 W19, powder-coated in RAL of your choice.
- Side cladding made of 3mm aluminium AlMg3 W19, powder-coated in RAL of your choice.
- The uprights are made of 60.3 mm stainless steel V2A 1.4301, polished for screw mounting or setting in concrete.

#### Important information:

To achieve optimum water protection for your mail, the letterbox or letterbox system should be located under a canopy if possible.

The mail is only protected from water if it is completely placed in the box and the flap is closed. Mail that is not fully inserted allows moisture and dirt to enter the letterbox. This system is protected against the ingress of water in accordance with DIN EN 13724. Water ingress is not a reason for complaint.

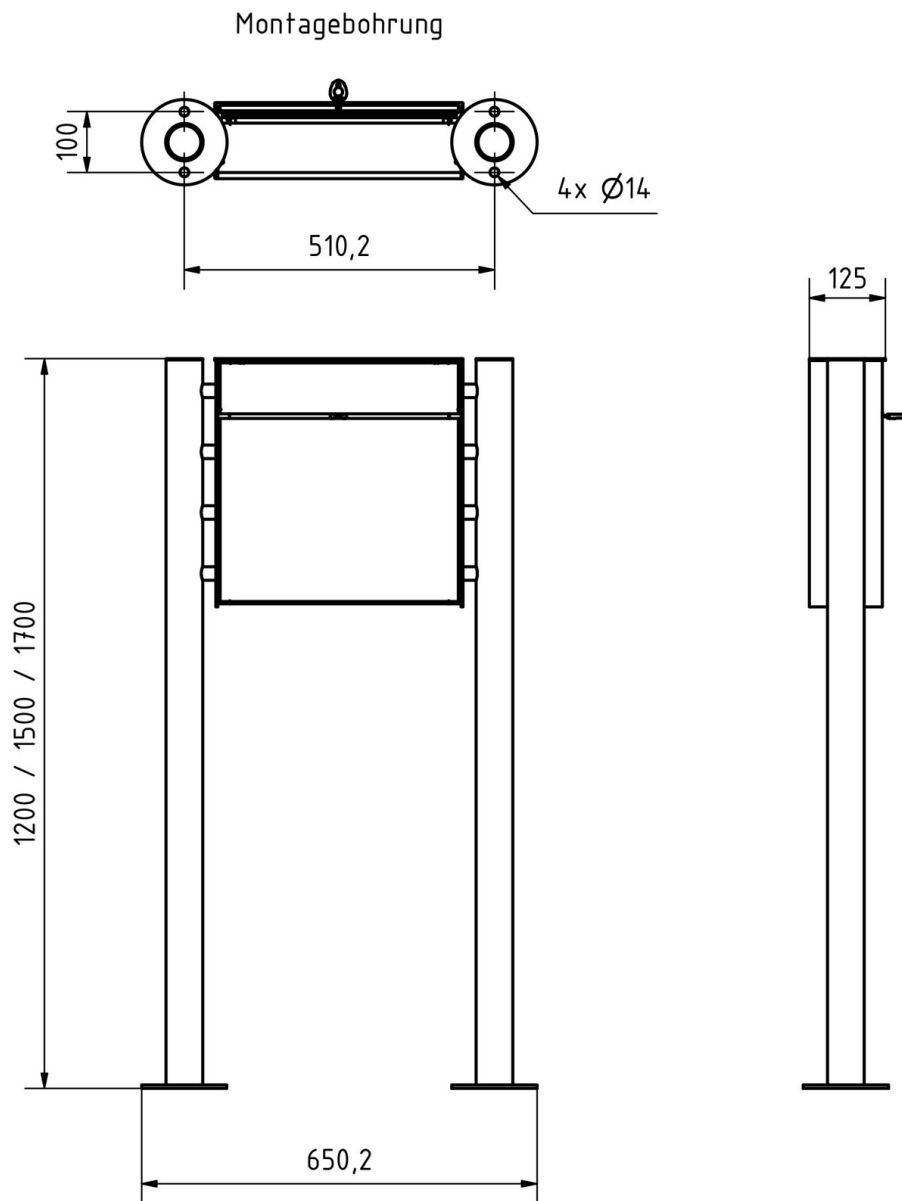
## Product properties

<b>Surface/colour</b>	RAL 9005 deep black, RAL 3004 crimson red, DB 703 iron mica, RAL 7016 anthracite grey, RAL of your choice (according to colour table), RAL 9007 grey aluminium, RAL 9016 traffic white
<b>Series</b>	GOETHE
<b>Material</b>	Aluminium AlMg3 W19, Stainless steel V2A 1.4301, Stainless steel 1.4016 (non-rusting magnetic stainless steel)
<b>Mounting type</b>	Free-standing
<b>House number</b>	House number as laser engraving
<b>Name labelling</b>	Laser-engraved
<b>Removal of mail</b>	On the front
<b>Number of boxes</b>	with 1 letterbox
<b>Boxes by volume</b>	Large > 16 litres

## Dimensions

<b>Height of single box in mm</b>	400,0
<b>Width of single box in mm</b>	400,0
<b>Capacity in litres</b>	16
<b>Height of letterbox slot in mm</b>	35,0
<b>Width of letter slot in mm</b>	360,0
<b>Height of letterbox in mm</b>	400,0
<b>Width of letterbox system in mm</b>	400,0
<b>Overall height in mm</b>	1200,0   1500,0   1700,0
<b>Total width in mm</b>	570,0
<b>Depth in mm</b>	100.0 + 25.0 Rain roof
<b>Weight in kg</b>	18
<b>Delivery condition</b>	Supplied in blocks, stand elements / letterbox divided

## Drawing



## More images



