

Design flush-mounted letterbox GRIMM - Colour of your choice | ? Colour of your choice | Flush-mounted

Product number 562-UP-1-SF



Product description

Design letterbox GRIMM® - A masterpiece of letterbox manufacturing

The GRIMM® designer letterbox is the perfect eye-catcher for any entrance area. With clear lines and a no-frills design, this letterbox is impressive across the board. Developed with over 21 years of experience in letterbox construction, the GRIMM® combines the best of our DESIGNER and GOETHE® collections. The flush-mounted look of the DESIGNER letterbox meets state-of-the-art locking technology and optimum weather protection, as found in the GOETHE® collection.

The GRIMM® letterbox is not only a visual highlight, but also at the forefront in terms of functionality and quality. Thanks to the innovative push-key lock, the letterbox can be operated easily and conveniently with one hand. Open the door with one push and close the door without using a key. The lock is optimally protected from the weather. The letterbox also features an intelligent removal system: the door opens from top to bottom, ensuring that the mail remains securely in the box and cannot fall towards you. Mail is also conveniently inserted from the front, with high-quality axle dampers ensuring that the flap closes gently. The GRIMM is particularly unique thanks to its double box system: the flush-mounted box can be installed during the shell construction phase, while the front panel is only fitted once the construction work has been completed - for maximum flexibility in the future and protection from dirt and dust during the construction phase. The plaster box is made of stainless steel and has pre-punched cable inlets on all sides to enable easy electrical installation.

Thanks to the DIN/EN 13724 standard, the GRIMM is ideal for large letters in C4 format, which can be inserted without creasing. The GRIMM® letterbox impresses with its durable quality, timeless design and sophisticated functionality.

- High-quality letterbox made entirely of stainless steel for flush mounting.
- Front panel made of 2 mm stainless steel V2A 1.4301, powder-coated.
- Quality production - Made in Germany by Briefkasten Manufaktur Lippe.
- Innovative push-key lock including 2 keys with key number, convenient locking without key, optimally protected from the weather.
- The removal door with opening limiter opens from top to bottom to prevent mail from falling towards you.
- Front mail slot with high-quality axle dampers for very quiet mail insertion.
- DIN/EN 13724-compliant letterbox, insertion size (3.5 cm x 32.5 cm) for C4 landscape - even large letters remain intact. Additional stainless steel removal protection integrated.
- Optimum weather protection thanks to offset cover.
- Optional name labelling approx. 15-20 mm high.
- Optional house number lettering approx. 70-80mm high.
- Double box system: Ideal for flush-mounted installation. The cover can be easily installed once the construction work is complete.
- Flush-mounted box made of stainless steel 1.4016 (stainless, magnetic stainless steel) with pre-punched cable inlets on all sides.

Important information:

To achieve optimum water protection for your mail, the letterbox or letterbox system should be located under a canopy if possible.

The mail is only protected from water if it is completely placed in the box and the flap is closed. Mail that is not fully inserted allows moisture and dirt to enter the letterbox. This system is protected against the ingress of water in accordance with DIN EN 13724. Water ingress is not a reason for complaint.

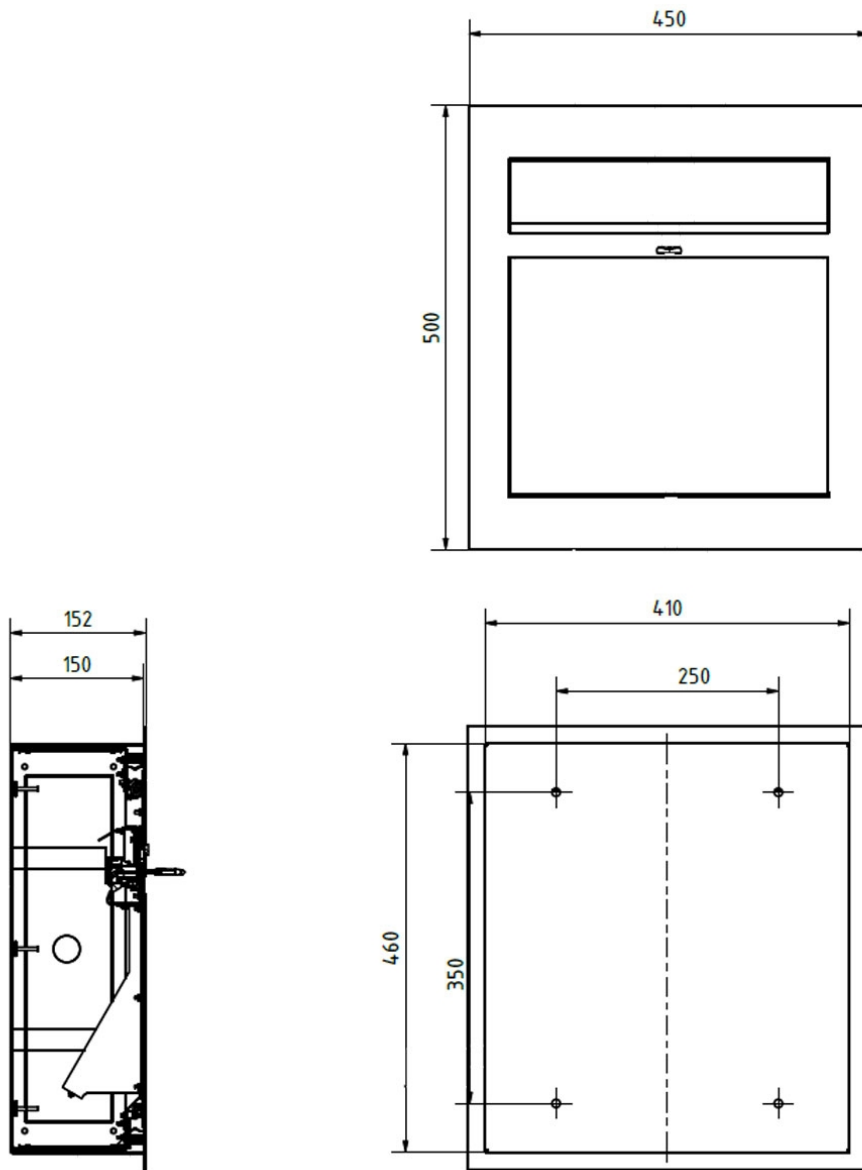
Product properties

Surface/colour	RAL 9005 deep black, RAL 3004 crimson red, DB 703 iron mica, RAL 7016 anthracite grey, RAL of your choice (according to colour table), RAL 9007 grey aluminium, RAL 9016 traffic white
Series	GRIMM
Material	Stainless steel V2A 1.4301, Stainless steel 1.4016 (non-rusting magnetic stainless steel)
House number	House number as laser engraving
Name labelling	Laser-engraved
Removal of mail	On the front
Number of boxes	with 1 letterbox
Boxes by volume	Large > 16 litres
Mounting type	Flush-mounted

Dimensions

Height of single box in mm	460,0
Width of single box in mm	410,0
Capacity in litres	26,0
Height of letterbox slot in mm	35,0
Width of letter slot in mm	325,0
Height of letterbox in mm	External dimension 500.0 installation dimension 460.0
Width of letterbox system in mm	External dimension 450.0 installation dimension 410.0
Depth in mm	150,0
Weight in kg	16
Delivery condition	Delivery is assembled

Drawing



More images

