

# Design wall light KELLER with motion detector 250x315 - polished stainless steel | with motion detector | Stainless steel, ground

Product number 636VA



## Product description

### Design wall light KELLER with motion detector 250x315 - polished stainless steel

High-quality wall light with motion detector for outdoor and indoor use made of polished stainless steel.

- The wall light is made of cast aluminium, stainless steel and pressed glass, opal.
- Incl. integrated motion detector.
- E 27 base, suitable for lamps of energy classes A++ to E max. 57 W.
- Protective conductor connection.
- Protection class IP 44 - splash-proof.
- With cast aluminium mounting plate for fixing.
- 2 fixing holes 6 mm, distance diagonal, vertical 150 mm, horizontal 52 mm Connection terminal 2 x 2.5 mm².
- CE mark of conformity.
- Manufactured by Gebrüder Albert GmbH & Co KG Leuchtenfabrik - Quality Made in Germany (Fröndenberg).

#### Installation:

The national and international electronic safety regulations must be observed for the installation and operation of this luminaire. Use the three grub screws to loosen the wall plate from the luminaire fitting. Feed the mains cable connection through the cable grommet and fix the wall plate to the mounting base. Push the enclosed silicone tubes over the connecting wires. Connect the protective conductor and electrical connection to the terminal. Insert the light source. Tighten the light fitting and glass to the wall plate using the grub screws. Please read the enclosed operating instructions for handling the integrated motion detector.

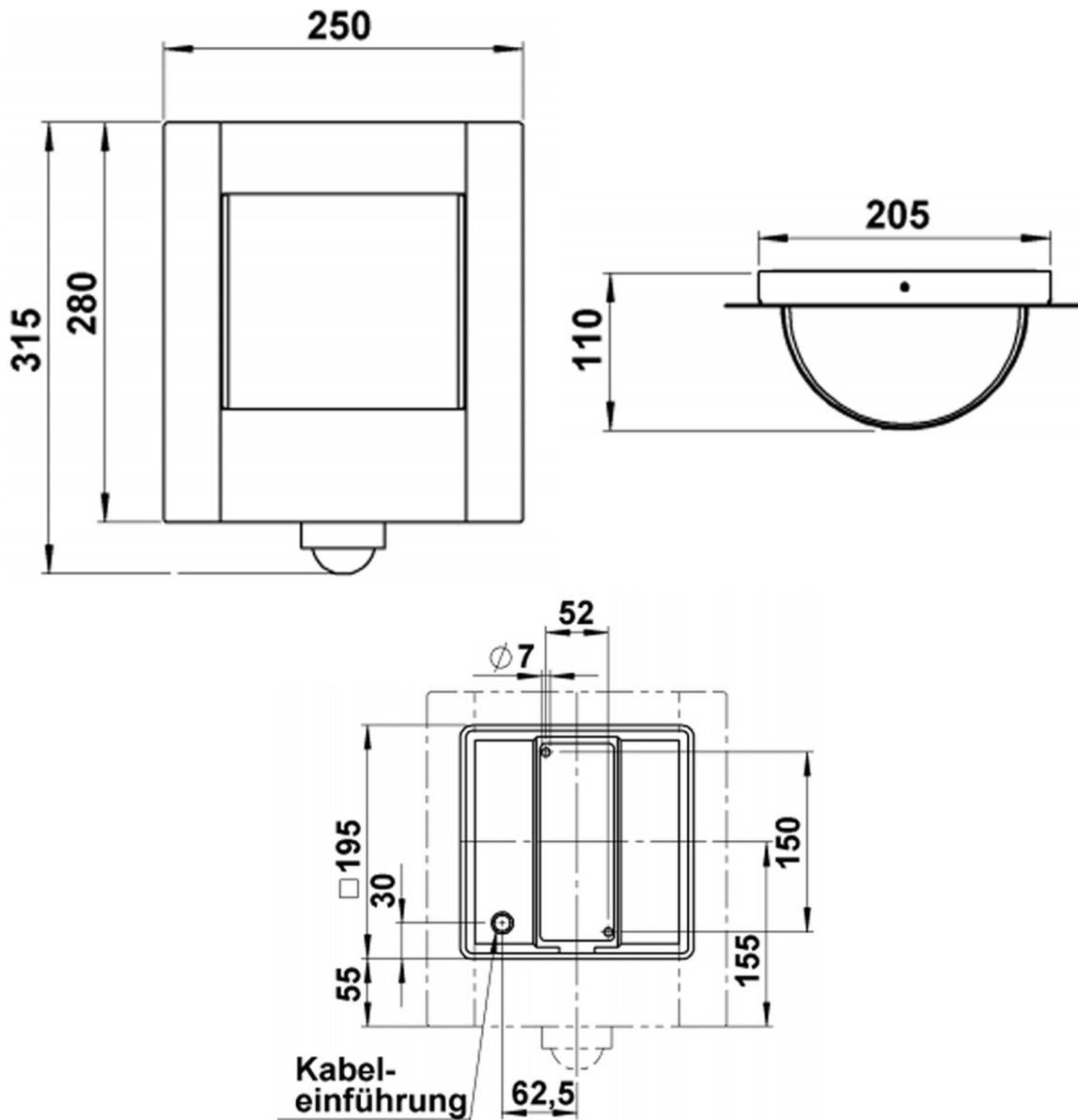
## Product properties

<b>Protection type</b>	IP44
<b>Illuminants</b>	ohne
<b>Functions</b>	Motion detector
<b>Material</b>	Aluminium AlMg3 W19, Stainless steel V2A 1.4301
<b>Surface/colour</b>	Brushed
<b>Protection class</b>	I

## Dimensions

Width in mm	250
Height in mm	315
Depth in mm	110,0
Delivery condition	Supplied fully assembled

## Drawing



## More images

