

# Stainless steel fence letterbox free-standing designer model BIG - GIRA System 106 - 3-gang prepared

Product number 325BR-V-GI106



## Product description

### Stainless steel fence mailbox free-standing designer model BIG - GIRA System 106 - 3-gang prepared

High-quality, free-standing letterbox with rear removal from the Briefkasten Manufaktur brand in an extra-large format. The Gira System 106 can be used seamlessly in a flush-mounted design. The preparation is intended for 3 GIRA 106 system modules. The modules can be flush-mounted using the simple mounting system (surface-mounted housing 5503910 required!).

This is a real eye-catcher among letterboxes. Clear lines and no-frills design characterise the designer letterbox with GIRA System 106. Our products have a high quality, reliable functionality and their own identity. Made by Briefkasten Manufaktur.

- Stainless steel free-standing letterbox made of 2 mm V2A stainless steel, polished.
- Front mail removal door 240 mm x 300 mm, opens from top to bottom. Incl. 2 keys with key number.
- Mail slot from the front, dimensions: W 32 cm x H 6.3 cm, C4 landscape. Very large letters fit in here without creasing.
- **Now with built-in damping elements that allow the flap to close slowly and quietly.**
- The uprights are made of 60.3 mm stainless steel V2A 1.4301, polished. Invisible cable routing through the uprights.
- **WITHOUT GIRA system components!**

## Important information

Camera or intercom preparation

**The intercom systems must be connected by an electrician. Please contact your trusted electrician for planning, fitting and installation.**

Water protection

To achieve optimum water protection for your mail, the letterbox or letterbox system should be located under a canopy if possible. If you install this system completely free-standing, we recommend using a rain canopy. Tight-fitting self-adhesive rain cover enclosed.

The mail is only protected from water if it is fully inserted in the box and the flap is closed. Mail that is not fully inserted allows moisture and dirt to penetrate the letterbox. It is therefore necessary to plan sufficiently dimensioned letterboxes for the upcoming requirements. In certain extreme weather conditions, water can still enter (up to 1ccm according to DIN EN 13724). This is not a reason for complaint.

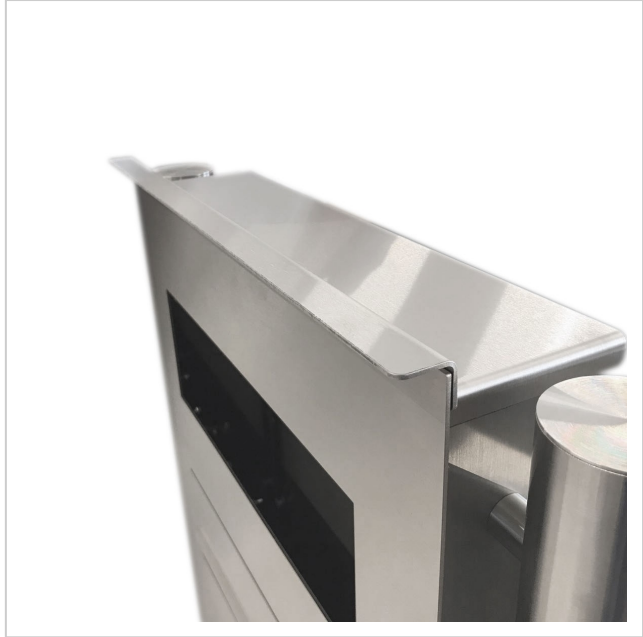
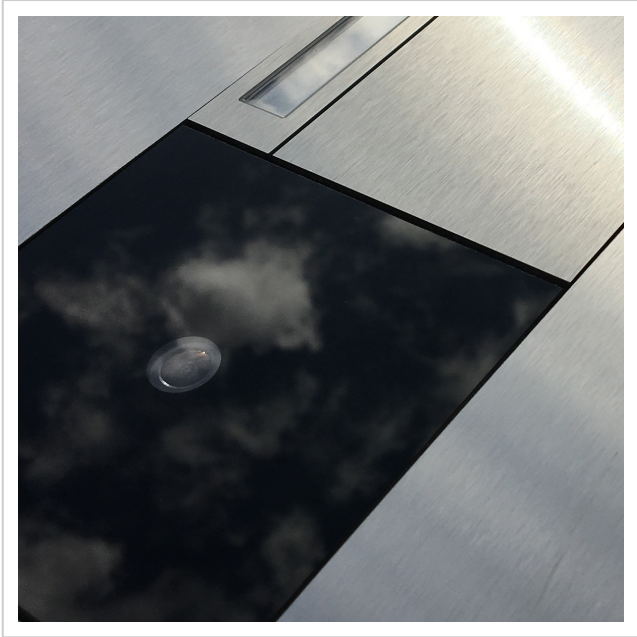
## Product properties

<b>Series</b>	DESIGNER
<b>Functions</b>	Newspaper compartment
<b>Functional box prepared for manufacturer</b>	GIRA
<b>Mounting type</b>	Free-standing
<b>Material</b>	Stainless steel V2A 1.4301
<b>Number of boxes</b>	with 1 letterbox
<b>Surface/colour</b>	Brushed
<b>Boxes by volume</b>	Large > 16 litres
<b>Removal of mail</b>	On the back

## Dimensions

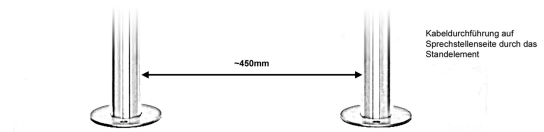
<b>Height of single box in mm</b>	710,0   750,0
<b>Width of single box in mm</b>	410,0   450,0
<b>Capacity in litres</b>	21
<b>Height of letterbox slot in mm</b>	63,0
<b>Width of letter slot in mm</b>	320,0
<b>Overall height in mm</b>	1200,0   1500,0
<b>Total width in mm</b>	570,0
<b>Depth in mm</b>	100,0
<b>Weight in kg</b>	35
<b>Delivery condition</b>	Supplied in blocks, stand elements / letterbox divided

## More images





Alle Angaben unter Vorbehalt von technischen Änderungen in mm. Maßtoleranzen möglich +/- 2mm.



Zur Verschraubung sind M12 Schraubenköpfe zu verwenden, diese werden nicht mitgeliefert.



#### Regendach "DESIGNER"

Für Aufputz-, Zaun- und Standbriefkästen der Kollektion Designer liegt ein Regendach bei. Dieses ist selbstklebend und nach erfolgreicher Montage oben auf dem Briefkasten aufzusetzen. Achten Sie dabei auf eine genaue Ausrichtung!



