

Stainless steel free-standing letterbox designer model BIG - Clean Edition - Lateral - RAL of your choice - INDIVIDUAL | Left

Product number 592D-B-R-STR-L



Product description

Stainless steel free-standing letterbox designer model BIG - Clean Edition - Lateral - RAL colour of your choice - INDIVIDUAL

High-quality manufactured free-standing letterbox from Briefkasten Manufaktur with powder-coated front panel in RAL colour. A real eye-catcher among letterboxes. Clear lines and no-frills design characterise this designer free-standing letterbox. With extra volume for very large volumes of mail.

Our products have a high quality, reliable functionality and their own identity. Made by Briefkasten Manufaktur.

- Designer stainless steel free-standing letterbox made of 2 mm stainless steel V2A 1.4301, front panel powder-coated in RAL colour; dimensions of individual box: height 750 mm; width: 450 mm; depth 100 mm.
- Front mail removal door 350 mm x 300 mm, opens from top to bottom. Incl. 2 keys with key number.
- Mail slot from the front, dimensions: W 35 cm x H 6.3 cm, C4 landscape. Very large letters fit in here without creasing. Attention, no removal protection!
- With built-in damping elements that allow the flap to close slowly and quietly.
- Optional exchangeable nameplate made of stainless steel with laser inscription or nameplate made of Plexi.
- 8-12V DC short-stroke bell push with LED ring lighting (blue, white, red or green). The bell button lighting cannot be supplied via the control unit. It must be connected to an additional 8-12 V DC power supply.
- An 8-12 V DC short-stroke light button with pictogram is available as an option.
- Preparation (built-in loudspeaker not included) for intercom system possible.
- Optionally with universal adapter for all commercially available built-in loudspeakers.
- Optional preparation (camera not included in scope of delivery) for a camera.
- Optionally with house number in polished look (67mm high), offset mounted or house number approx. 70mm high (max. 3 digits) with energy-saving LED lighting 12V DC approx. 50mA / 1W, white.
- The pedestals are made of 60.3 mm stainless steel V2A 1.4301, polished. Invisible cable routing through the uprights.

Important information

Camera or call station preparation

We recommend that the electrical installation is always carried out by an electrician.

We offer the preparation of cameras and intercoms from various manufacturers for our letterboxes. The preparation does not include any end devices, but only the provision of screw mounts, drill holes and perforations. So that you can mount your end device without any problems.

Water protection

To achieve optimum water protection for your mail, the letterbox or letterbox system should be located under a canopy if possible. If you install this system completely free-standing, we recommend using a rain canopy. Tight-fitting self-adhesive rain cover enclosed.

The mail is only protected from water if it is fully inserted in the box and the flap is closed. Mail that is not fully inserted allows moisture and dirt to penetrate the letterbox. It is therefore necessary to plan sufficiently dimensioned letterboxes for the upcoming requirements. Under certain extreme weather conditions, water can still enter (up to 1ccm according to DIN EN 13724). This is not a reason for complaint.

Product properties

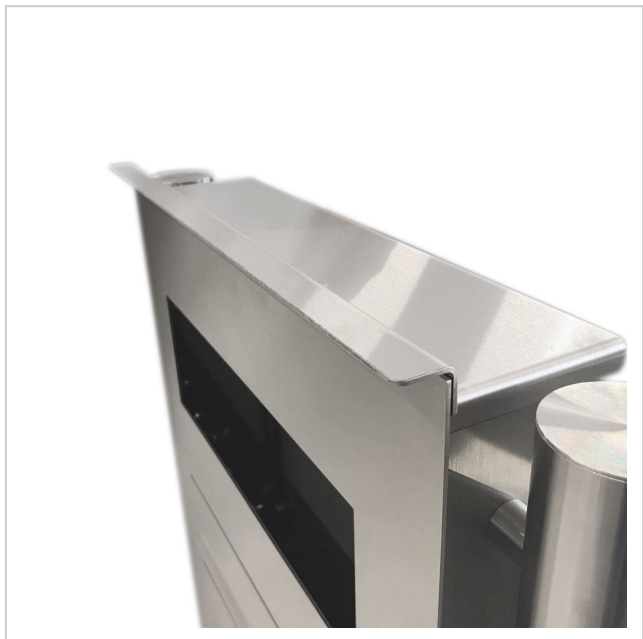
Surface/colour	RAL 9005 deep black, RAL 3004 crimson red, DB 703 iron mica, RAL 7016 anthracite grey, RAL of your choice (according to colour table), Brushed, RAL 9007 grey aluminium, RAL 9016 traffic white
Series	DESIGNER
Number of bell push buttons	1 button
Functions	Newspaper compartment
Functional box prepared for manufacturer	LOXONE, GIRA, 2N, Busch Jaeger, Siedle, DoorBird, STR Elektronik, ELCOM, TCS, Ritto, ALGO, Telegärtner, Auerswald, Legrand Bticino, HHG, HIKVISION, PCS, Sesam, ekey
Name labelling	Laser-cut engraving, Nameplate, Laser-engraved , Illuminated laser-cut engraving
Mounting type	Free-standing
Material	Stainless steel V2A 1.4301
House number	House number as laser cut, illuminated
Removal of mail	On the front
Number of boxes	with 1 letterbox
Boxes by volume	Large > 16 litres

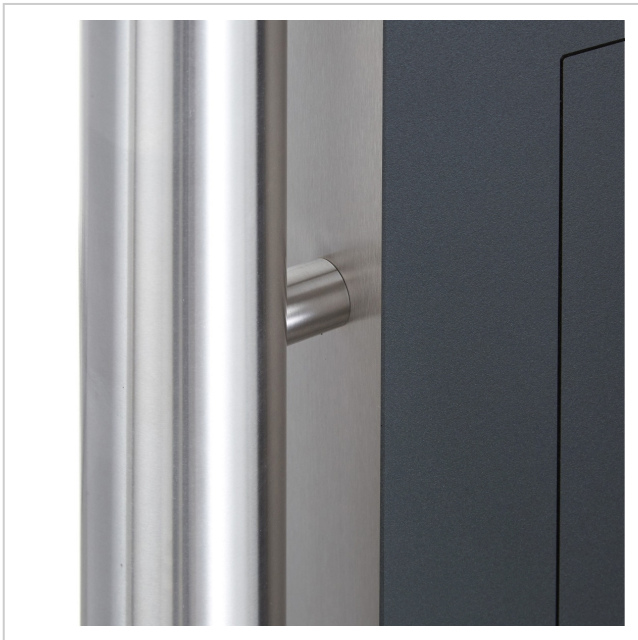
Dimensions

Height of single box in mm	510,0 550,0
Width of single box in mm	560,0 600,0
Capacity in litres	21
Height of letterbox slot in mm	63,0
Width of letter slot in mm	350,0
Overall height in mm	1200,0 1500,0
Total width in mm	720,0
Depth in mm	100,0
Weight in kg	35
Delivery condition	Supplied in blocks, stand elements / letterbox divided

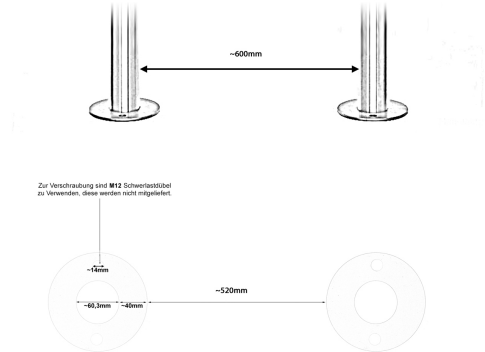
More images







Alle Angaben unter Vorbehalt von technischen Änderungen in mm. Maßtoleranzen möglich +/- 2mm.



Regendach "DESIGNER"

Für Aufputz-, Zaun-, und Standbriefkästen der Kollektion Designer liegt ein Regendach bei. Dieses ist selbstklebend und nach erfolgreicher Montage oben auf dem Briefkasten aufzusetzen. Achten Sie dabei auf eine genaue Ausrichtung!

