

Stainless steel fence letterbox Designer BIG - RAL 7016 anthracite grey - GIRA System 106 - Video intercom system - VIDEO complete set | RAL 7016 anthracite grey, fine structure, matt

Product number 515BR-R-KSVGI106-7016



Product description

Stainless steel fence letterbox Designer BIG - RAL of your choice - GIRA System 106 - Video intercom - VIDEO complete set

High-quality fence letterbox from Briefkasten Manufaktur in extra-large format. Seamlessly integrated Gira System 106 in flush-mounted design. 3 GIRA system modules are included, so the letterbox can be used directly. The matching GIRA home station and the control unit to complete this letterbox are included. The modules can be replaced at any time thanks to the simple mounting system.

This is a real eye-catcher among letterboxes. Clear lines and no-frills design characterise the designer letterbox with GIRA System 106. Our products have a high quality, reliable functionality and their own identity. Made by Briefkasten Manufaktur.

- Designer stainless steel fence letterbox made of 2 mm stainless steel V2A, powder-coated to RAL colour fine structure matt.
- Rear mail removal door 240 mm x 300 mm, opens from top to bottom. Incl. 2 keys with key number.
- Mail slot from the front, dimensions: W 32 cm x H 6.3 cm, C4 landscape. Very large letters fit in here without creasing. Attention no removal protection!
- **Now with built-in damping elements that allow the flap to close slowly and quietly.**
- Surface-mounted box dimensions: H 710 mm x W 410 x D 100 without fixing holes (must be provided by customer). ATTENTION the front panel protrudes 2 cm all round.
- Surface-mounted box made of V2A stainless steel, polished on all sides.
- Incl. GIRA home station & control unit enclosed, System 106 door station module, info module & camera module installed.

GIRA

Gira System 106 camera module - 5561 000, installed without wiring

- A high-quality camera with high light sensitivity is concealed behind the replaceable black glass pane. Thanks to a detection angle of 100°, the user is always aware of what is happening outside his front door.

Info module Gira System 106 - 5560 920, installed

- For house numbers that need to be clearly visible.

Door station module Gira System 106 - 5565 920, installed without wiring

- Compact voice module with integrated call button for communication between inside and outside.
- A high-quality microphone and a weatherproof loudspeaker ensure good communication.
- Power supply via 2-wire bus. Additional connection for ZV (e.g. necessary from 3rd camera module).
- All other System 106 modules (except voice module) are supplied with power via the door station module.

Surface-mounted home station Gira Video 7 1209xx, enclosed

- Video home station with a 17.78 cm (7") TFT colour display and convenient hands-free function for surface mounting or wall mounting with flush-mounted device box or cavity wall box. With the optional stand (see accessories) also suitable for placement on furniture. A 32 GB SD memory card is included for internal image storage. Full-surface glass front with touch functionality and tactile feedback.

Video REG control device Gira 128800, enclosed

- Control device for supplying the audio and video components of the Gira door communication bus.
- Supply of the reverse-polarity protected and short-circuit-proof 2-wire bus when using video components such as colour camera, TFT colour display.
- Up to 2 door stations with colour camera and 28 home stations with TFT colour display can be supplied via the video control device.
- A total of up to 15 colour cameras can be controlled by the video control device (5 video door stations and 10 DCS camera gateways), of which two door stations with colour camera can be supplied with power by the video control device. The other colour cameras must each be operated with their own power supply for door communication.
- Self-resetting electronic short-circuit and overload detection of the operating voltages and the bus connection.
- Buttons for system and door release programming.
- LED status indicators for operation, overload, system programming and door opener programming.
- AC 12 V output for supplying power to a standard electric strike.
- Relay output for switching an electric strike with its own power supply.
- Door opener switching time continuously adjustable from 1 to 10 s.

Important information

Camera or intercom preparation

The intercom systems must be connected by an electrician. Please contact your trusted electrician for planning, fitting and installation.

Water protection

To achieve optimum water protection for your mail, the letterbox or letterbox system should be located under a canopy if possible.

The mail is only protected from water if it is fully inserted in the box and the flap is closed. Mail that is not fully inserted allows moisture and dirt to penetrate the letterbox. It is therefore necessary to plan sufficiently dimensioned letterboxes for the upcoming requirements. Under certain extreme weather conditions, water can still enter (up to 1ccm according to DIN EN 13724). This is not a reason for complaint.

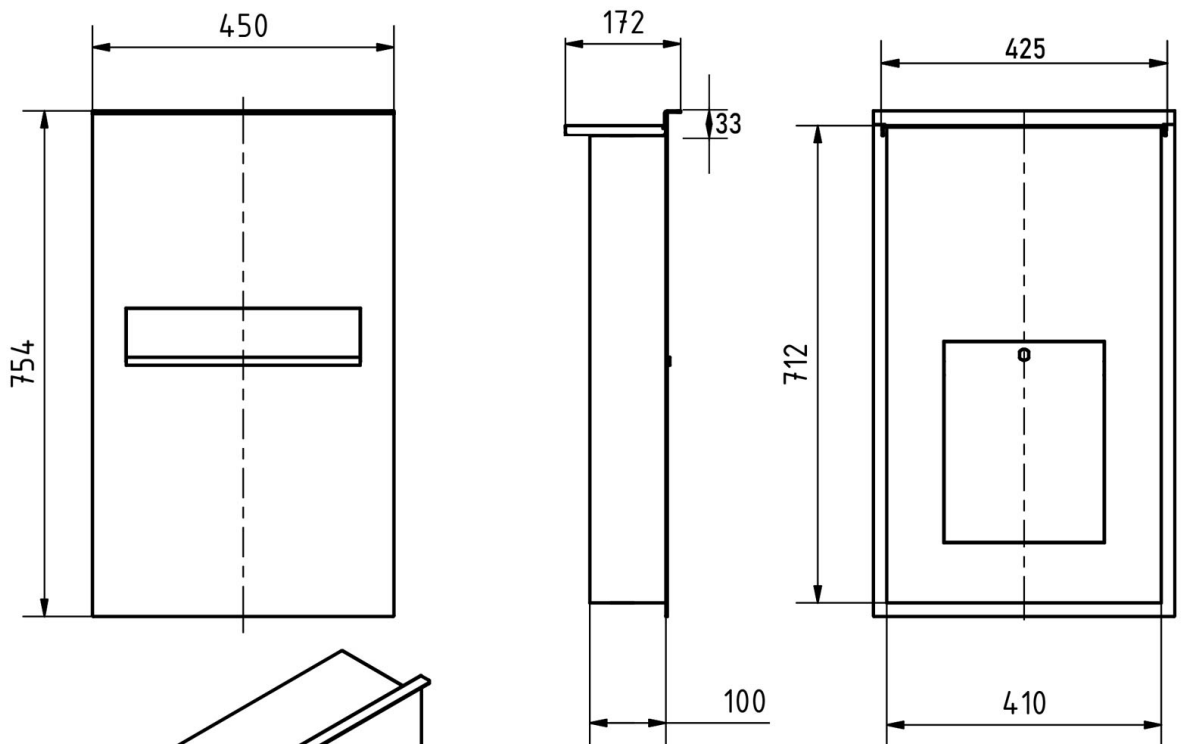
Product properties

Series	DESIGNER
Connection technology	2-wire
Number of bell push buttons	1 button
Functions	Newspaper compartment, Camera, Intercom
Functional box prepared for manufacturer	GIRA
Material	Stainless steel V2A 1.4301
Mounting type	Fence
Surface/colour	RAL 7016 anthracite grey
Number of letterboxes	with 1 letterbox
Boxes by volume	Large > 16 litres
Removal of mail	On the back

Dimensions

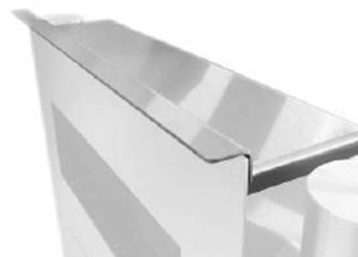
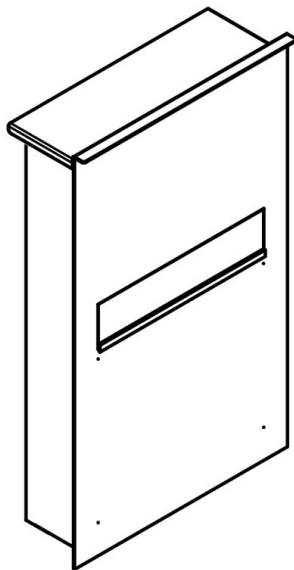
Height of single box in mm	710,0 750,0
Width of single box in mm	410,0 450,0
Capacity in litres	21,0 31,0
Height of letterbox slot in mm	63,0
Width of letter slot in mm	320,0
Depth in mm	100,0
Weight in kg	32
Delivery condition	Delivery is assembled

Drawing

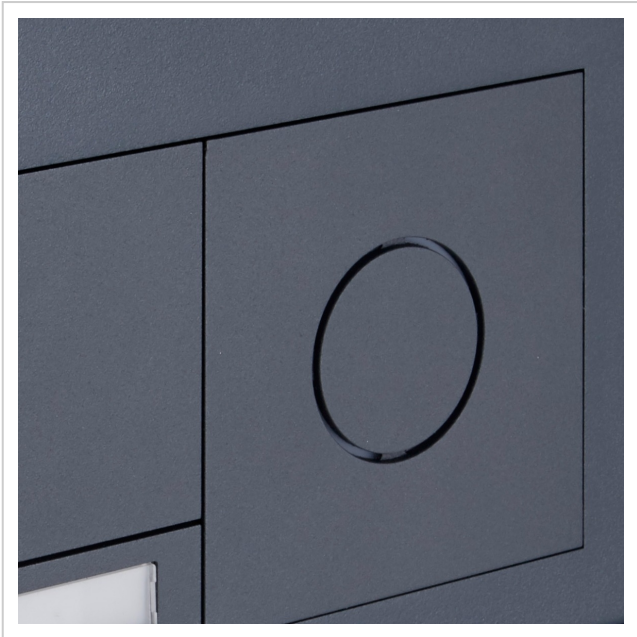


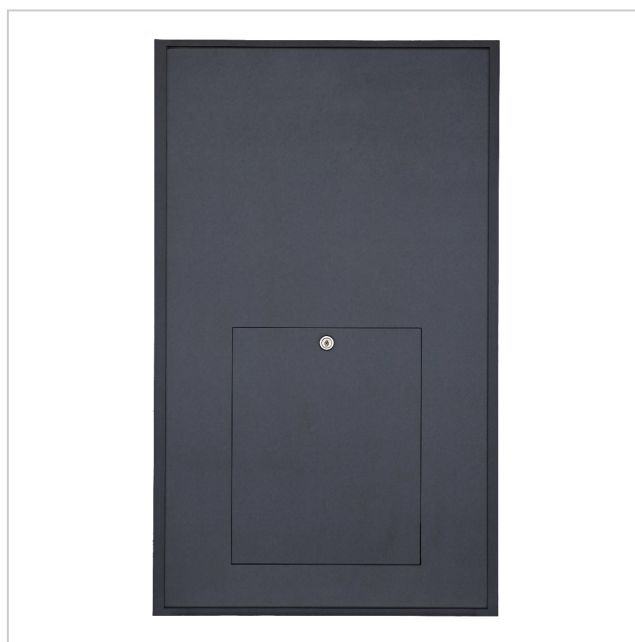
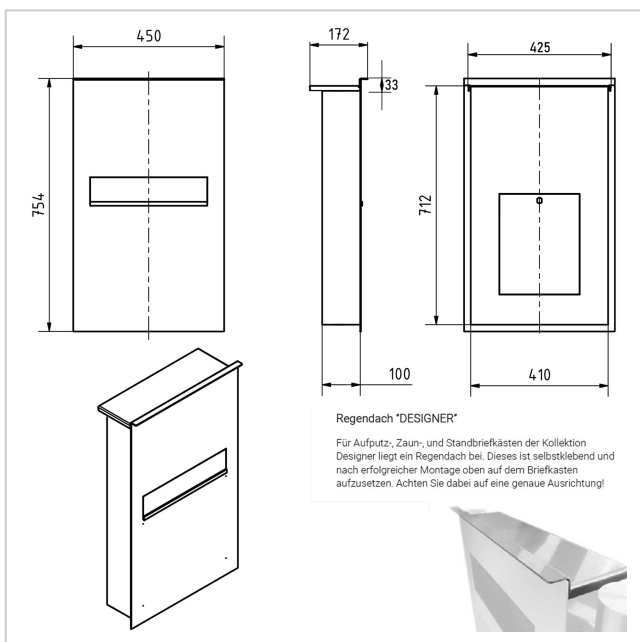
Regendach "DESIGNER"

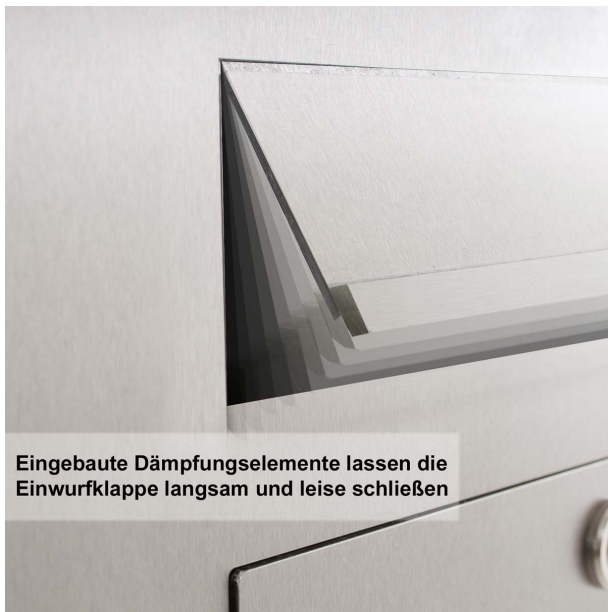
Für Aufputz-, Zaun-, und Standbriefkästen der Kollektion Designer liegt ein Regendach bei. Dieses ist selbstklebend und nach erfolgreicher Montage oben auf dem Briefkasten aufzusetzen. Achten Sie dabei auf eine genaue Ausrichtung!



More images







Eingebaute Dämpfungselemente lassen die
Einwurfklappe langsam und leise schließen