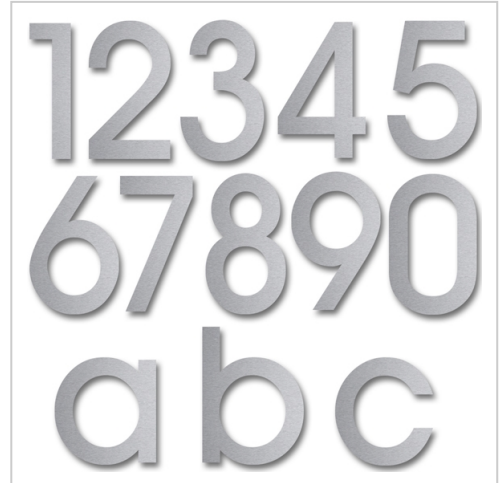


# Stainless steel house number Hölderlin | A (capital letter) | 150mm | Stainless steel, ground

**Product number** 528-01-VA-16



## Product description

### Stainless steel house number Hölderlin

Choosing the right font is crucial for a house number. Optimum legibility is the top priority. However, the house number is also an important design element. There are two 30 mm long threaded welding studs on the back. After drilling the holes and inserting the plugs, all you need to do is attach the numbers/letters.

Made in Germany, manufactured in Bad Salzuflen

- House number made of stainless steel V2A 1.4301.
- Fastening to the wall is carried out using welding studs, which are simply inserted into the dowel holes.
- Material thickness 2 mm.
- Supplied with dowels (S6).

## Product properties

**Mounting type** Plug-in bolt

**Material** Stainless steel V2A 1.4301

**Surface/colour** Brushed

## Dimensions

**Height in mm** max. 150

**Depth in mm** 2,0

**Weight in kg** 0,5

## More images

