

2-piece stainless steel wall conduct letterbox designer model - GIRA System 106 - 3-gang prepared | with 2 letterboxes (1x2)

Product number 515DW-2-V-GI106



Product description

2-piece stainless steel wall-mounted mailbox designer model - GIRA System 106 - 3-gang prepared

High-quality, through-the-wall letterbox from Briefkasten Manufaktur. Due to the variable shaft length between 270mm and 400mm, this letterbox can be used in almost all masonry. The post is removed from the rear. The front and rear stainless steel plates made of 2mm stainless steel V2A, polished, are fixed to the wall with screws (cover caps included).

The Gira System 106 can be used seamlessly in a flush-mounted design. The preparation is intended for 3 GIRA 106 system modules. The modules can be flush-mounted using the simple mounting system (surface-mounted housing 5503910 required!).

This is a real eye-catcher among letterboxes. Clear lines and no-frills design characterise the designer letterbox with GIRA System 106. Our products have a high quality, reliable functionality and their own identity. Made by Briefkasten Manufaktur.

- 2-piece designer stainless steel letterbox made of 2 mm stainless steel V2A, 1.4301 240 grain polished.
- Rear mail removal door 300x100mm, opens from left to right.
- Stainless steel cylinder lock with dust protection flap & 2 keys with key number per party.
- Replaceable anti-vandalism plexiglass nameplate incl. tool - The nameplate is indentation-proof and impact-resistant, the plastic is flame-retardant.
- Mail slot from the front, dimensions: W 32 cm x H 3.5 cm, C4 landscape. Very large letters fit in here without creasing. Attention no removal protection!
- Dimensions front panel W 500mm x H 550mm.
- Cover plate dimensions with removal door W 500mm x H 400mm.
- Dimensions of letter chute W 380 mm x H 210-280mm.
- Variable shaft length 270-400mm.
- WITHOUT GIRA system components!

Important information

Camera or intercom preparation

The intercom systems must be connected by an electrician. Please contact your trusted electrician for planning, fitting and installation.

Water protection

To achieve optimum water protection for your mail, the letterbox or letterbox system should be located under a canopy if possible.

The mail is only protected from water if it is fully inserted in the box and the flap is closed. Mail that is not fully inserted allows moisture and dirt to penetrate the letterbox. It is therefore necessary to plan sufficiently dimensioned letterboxes for the upcoming requirements. Under certain extreme weather conditions, water can still enter (up to 1ccm according to DIN EN 13724). This is not a reason for complaint.

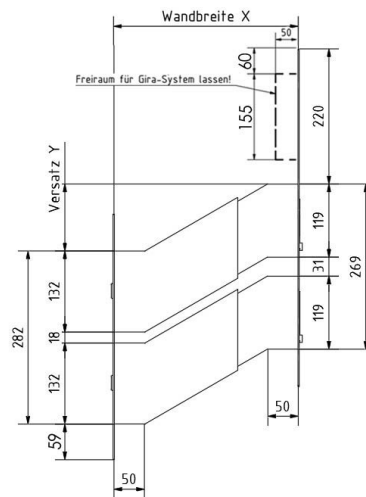
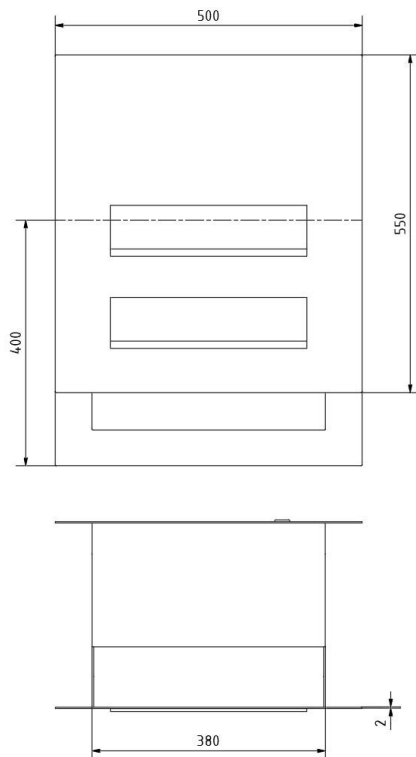
Product properties

Series	DESIGNER
Functions	Newspaper compartment
Functional box prepared for manufacturer	GIRA
Material	Aluminium AlMg3 W19, Stainless steel V2A 1.4301
Number of letterboxes	with 2 letterboxes
Surface/colour	Brushed
Boxes by volume	Large > 16 litres
Mounting type	Wall throw-through
Removal of mail	On the back

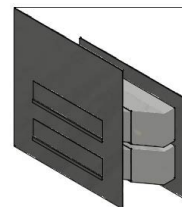
Dimensions

Capacity in litres	21,0 - 31,0
Height of letterbox slot in mm	35,0
Width of letter slot in mm	320,0
Depth in mm	270,0 - 400,0
Weight in kg	38
Delivery condition	Supplied partially disassembled. Front panel/slot separate

Drawing



Wandbreite X	Versatz Y
270	91,5
280	97,5
290	103
300	109
310	115
320	120,5
330	126,5
340	132
350	138
360	143,5
370	149,5
380	155
390	161
400	166,5



More images

