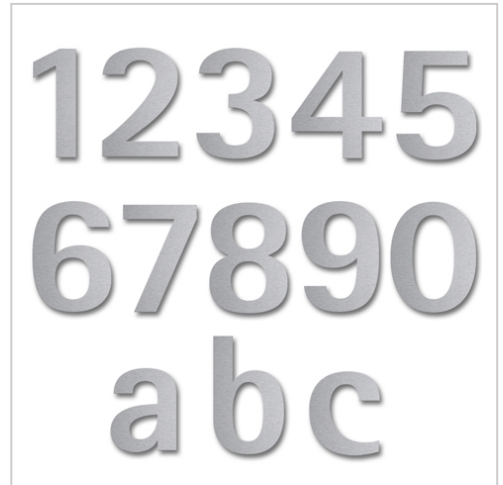


# Stainless steel house number Klopstock | A (capital letter) | 300mm | Stainless steel, ground

**Product number** 528-300-VA-16



## Product description

### Stainless steel house number Klopstock 300

Choosing the right font is crucial for a house number. Optimum legibility is the top priority. However, the house number is also an important design element. There are two 30 mm long threaded welding studs on the back. After drilling the holes and inserting the plugs, all you need to do is attach the numbers/letters.

Made in Germany, manufactured in Bad Salzuflen

- House number made of brushed stainless steel V2A 1.4301.
- Attachment to the wall is via welding studs, which are simply inserted into the dowel holes.
- Number height 30 cm.
- Material thickness 2 mm.
- Supplied with dowels (S6).

## Product properties

**Mounting type** Plug-in bolt

**Material** Stainless steel V2A 1.4301

**Surface/colour** Brushed

## Dimensions

**Height in mm** max. 301

**Depth in mm** 2,0

**Weight in kg** 0,5

## More images

