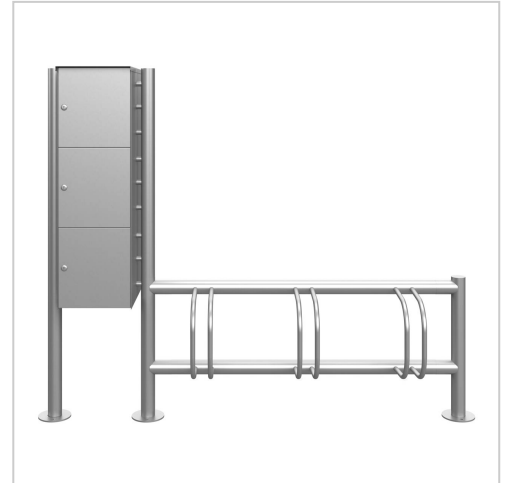


3-seater stainless steel bicycle stand ACHIM with lockers - e-bike charging station - polished V2A stainless steel | Left | Stainless steel, ground | 3-fold

Product number 670385XB-VA-3-L



Product description

Stainless steel bike stand ACHIM with lockers - Optional as e-bike charging station - Polished V2A stainless steel

The elegant ACHIM bicycle stand with curved brackets has an organic appearance thanks to its rounded shape, which fits into any modern environment. The bicycle stand is made entirely of polished V2A .4301 stainless steel and is suitable for 3 bicycles. The material and workmanship are characterised by the highest quality. Durable weather resistance and absolute robustness against high mechanical loads are a matter of course with this multiple bike stand. In addition, the ACHIM bicycle rack makes it possible to park bicycles in a theft-proof manner, as all components are welded together.

The stainless steel lockers, polished with side panelling and rain cover, can optionally be fitted with a Schuko socket. This allows the lockers to be used as an e-bike charging station. The lockers can be fitted with a lever lock, toggle lock (for padlocks) or with the RFID latch lock - Keylezz.

- **Triple bicycle rack made entirely of stainless steel V2A 1.4301, 240 grit polished**
- The bike rack is manufactured by Briefkasten Manufaktur. German quality production "Made in Germany".
- Suitable for one-sided wheel adjustment. Double-sided wheel adjustment is also possible on request.
- Tyre width 60 mm.
- Wheel centre distance 430 mm.
- Setting angle 90°.
- Stainless steel bracket made of Ø 15 mm round steel, 240 grit ground.
- **Lockers made of stainless steel V2A 1.4301, 240 grit polished**
- Lockers dimensions: 370x330x385mm (WHT), 46 litre volume.
- The doors can be opened from left to right.
- Incl. 2 keys with key number. Optionally with toggle lock (for padlocks) or with the RFID latch lock - Keylezz.
- Optional earthed socket outlet with shutter on the inside of each storage compartment. Front-facing cable routing always on the side of the storage compartment.
- Incl. close-fitting side panelling + rain cover made of stainless steel V2A 1.4301, 240 grain polished.
- The uprights and crossbars are made of 60.3 mm stainless steel V2A 1.4301, 240 grit polished, optionally for screw mounting or setting in concrete.

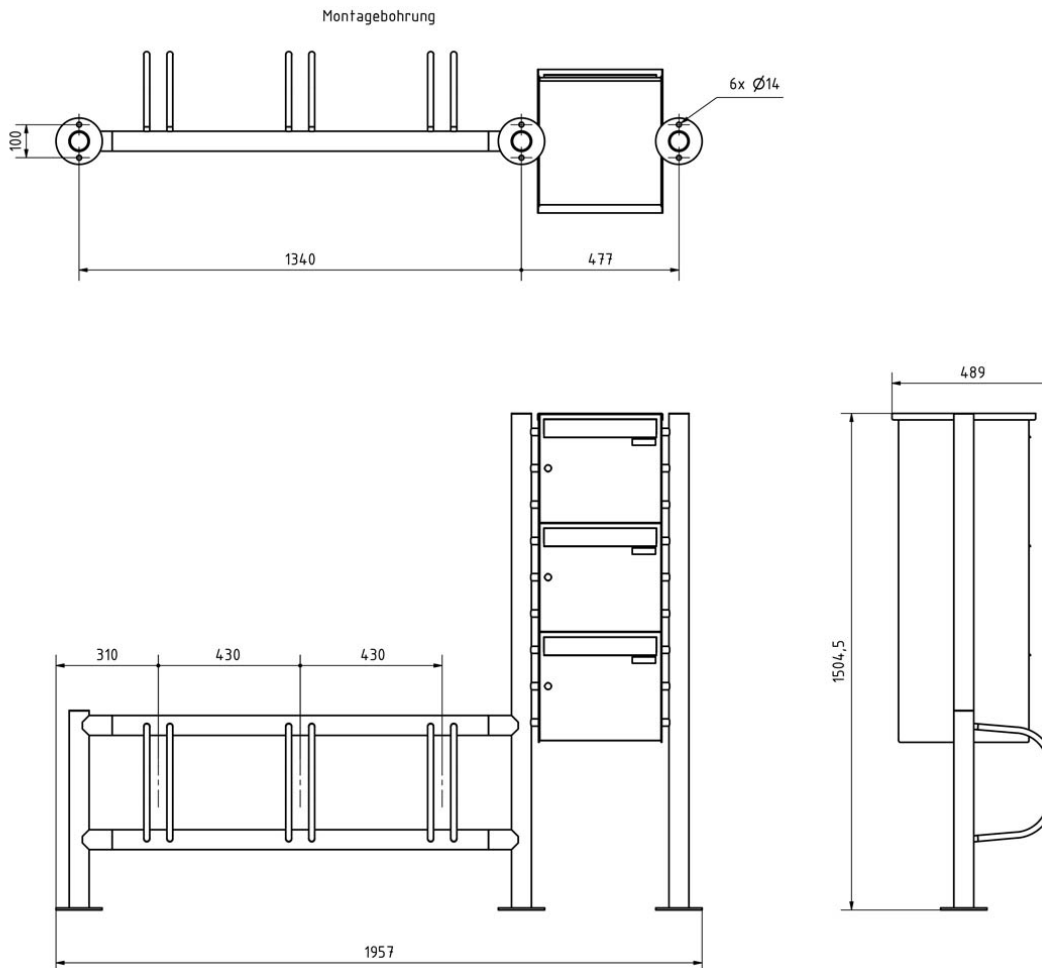
Product properties

Mounting type Free-standing
Material Stainless steel V2A 1.4301
Surface/colour Brushed

Dimensions

Height of single box in mm	330,0
Width of single box in mm	370,0
Capacity in litres	46
Overall height in mm	ABF 1500.0 FS 605.0
Total width in mm	ABF 840.0 + FS 1400.0 (without footplate)
Depth in mm	435,0
Weight in kg	85
Delivery condition	Supplied in blocks, stand elements/storage compartments divided

Drawing



More images

