

Stainless steel design fence letterbox DESIGNER Style BIG powder-coated - rear removal

Product number 523BR-VAR



Product description

Stainless steel design fence letter box DESIGNER Style BIG powder-coated - rear removal

High-quality stainless steel letterbox with powder coating in RAL or DB colour from Briefkasten Manufaktur in extra-large format. A real eye-catcher among the letterboxes. Clear lines and a no-frills design characterise this designer letterbox. The post is inserted at the front and residents can remove their mail from the back. Our products have a high quality, reliable functionality and their own identity. Made by Briefkasten Manufaktur.

- Designer stainless steel fence letterbox made of 2 mm V2A stainless steel, powder-coated, textured matt finish.
- No visible screws or rivets.
- Rear mail removal door 240 mm x 300 mm, opens from top to bottom. Incl. 2 keys with key number.
- Mail slot from the front, dimensions: W 35 cm x H 6.3 cm, C4 landscape. Very large letters fit in here without creasing. Attention no removal protection!
- **Now with built-in damping elements that allow the flap to close slowly and quietly.**
- Front panel dimensions: W 45 cm x H 55 cm x D 0.2 cm. ATTENTION the front panel protrudes 2 cm all round.
- Rear frame dimensions: H 510 mm x W 410 x D 100 without perforation. The holes for fastening must be made on site.
- Optional name lettering, lasered approx. 10 mm high.
- Optional house number labelling, lasered approx. 100 mm high.
- Water protection plate inside. Close-fitting rain screen enclosed.
- Body without fixing holes (must be provided on site!), optionally with fixing for bar fence.
- Incl. assembly aid.

Water protection

To achieve optimum water protection for your mail, the letterbox or letterbox system should be located under a canopy if possible.

The mail is only protected from water if it is fully inserted in the box and the flap is closed. Mail that is not fully inserted allows moisture and dirt to penetrate the letterbox. It is therefore necessary to plan sufficiently dimensioned letterboxes for the upcoming requirements. This system is protected against the ingress of water in accordance with DIN EN 13724. Water ingress is not a reason for complaint.

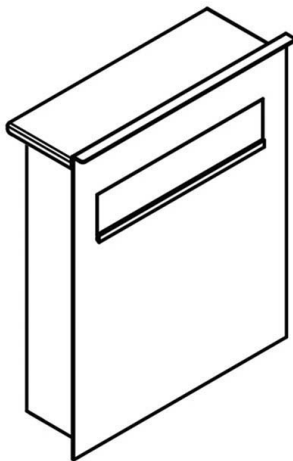
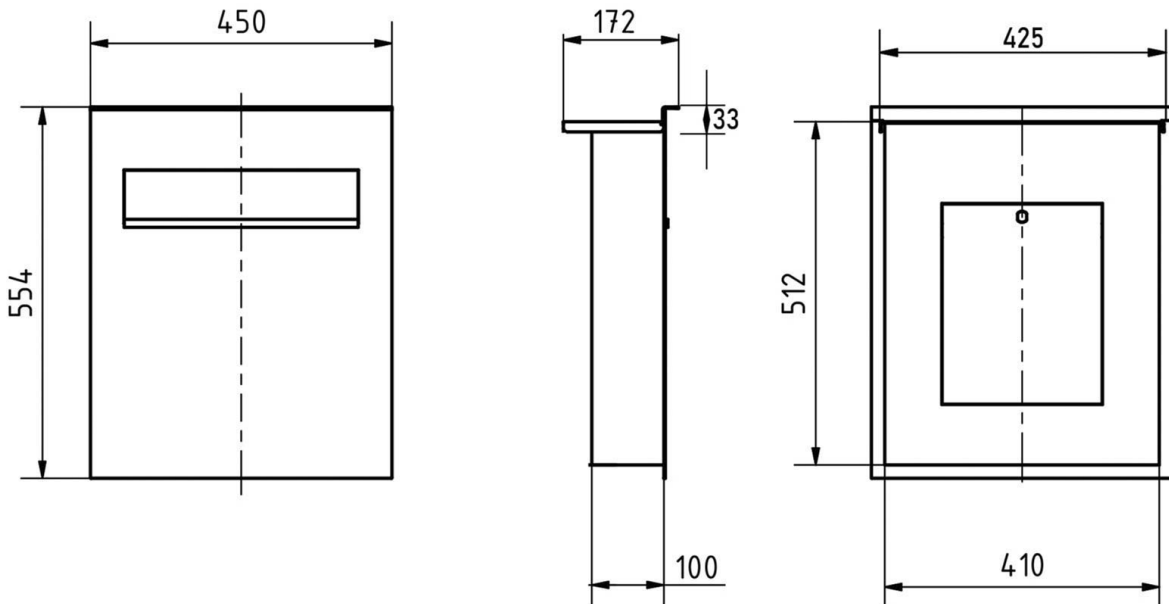
Product properties

Surface/colour	RAL 9005 deep black, RAL 3004 crimson red, DB 703 iron mica, RAL 7016 anthracite grey, RAL of your choice (according to colour table), RAL 9007 grey aluminium, RAL 9016 traffic white
Series	DESIGNER
Functions	Newspaper compartment
Boxes by volume	Normal > 10 litres
Material	Stainless steel V2A 1.4301
House number	House number as laser engraving
Mounting type	Fence
Name labelling	Laser-engraved
Number of boxes	with 1 letterbox
Removal of mail	On the back

Dimensions

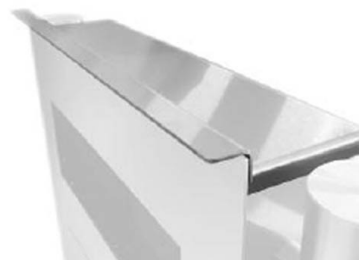
Height of single box in mm	510,0 550,0
Width of single box in mm	410,0 450,0
Capacity in litres	21,0 31,0
Height of letterbox slot in mm	65,0
Width of letter slot in mm	350,0
Depth in mm	100,0
Weight in kg	16
Delivery condition	Supplied fully assembled

Drawing



Regendach "DESIGNER" (entfällt bei Stabmattenhalterung)

Für Aufputz-, Zaun-, und Standbriefkästen der Kollektion Designer liegt ein Regendach bei. Dieses ist selbstklebend und nach erfolgreicher Montage oben auf dem Briefkasten aufzusetzen. Achten Sie dabei auf eine genaue Ausrichtung!



More images

