

4er 2x2 parcel compartment system BASIC Plus 863X STL with parcel compartment 440x370 - polished stainless steel | with 4 parcel boxes | Stainless steel, ground

Product number 863X-STL-4-VA



Product description

4er 2x2 parcel box system BASIC Plus 863X STL with parcel compartment 440x370 - polished stainless steel

The BASIC parcel box system from Briefkasten Manufaktur is the ideal solution for anyone who wants to be able to receive parcels securely and conveniently at any time of day or night. Specially developed for use in apartment blocks, companies and public institutions, the system impresses with its sophisticated technology, high-quality workmanship and timelessly modern design. The unobtrusive appearance blends harmoniously into a wide variety of architectural styles and functionally enhances any existing letterbox system.

A special feature of this parcel box system is the mechanical parcel lock with T-handle, which enables delivery without a delivery person. The deliverer places the parcel in the open compartment, closes the door with a simple click and the lock locks automatically. Only the authorised user with the right key can then open the compartment again. This simple but effective mechanism ensures maximum security - without any power connection or digital interfaces. Smart, secure and maintenance-free.

The letterbox systems in the BASIC Plus collection are characterised by the consistent use of V2A stainless steel. The result is a very long service life and sustainability. The design has been developed by our own engineers with a view to high flexibility and modularity, simple spare parts assembly and uncomplicated self-assembly. Spare parts are directly available for all BASIC Plus systems. With the BASIC parcel box system, you are opting for a durable, reliable and design-orientated solution for receiving parcels - 100% manufactured in Germany, in the letter box factory in Bad Salzungen.

- Parcel compartment system made entirely of stainless steel V2A 1.4301, polished.
- Parcel compartments 370x440x385 mm (WHT) incl. parcel lock with snap-in catch.
- Parcel compartment volume: 61 litres, max. Parcel dimensions: 340 x 410 x 350 mm (WHT).
- Including 2 keys with key number per parcel box and interchangeable name plate (type 2).
- Close-fitting side panelling with integrated rain edge projecting forwards, roof plate folded over side plates made of 2 mm stainless steel V2A 1.4301, polished.
- Rear wall made of 1 mm stainless steel 1.4301 V2A, polished.
- Base made of 40x40x2mm stainless steel tube 1.4301 V2A, polished. Invisible fastening for screw mounting.

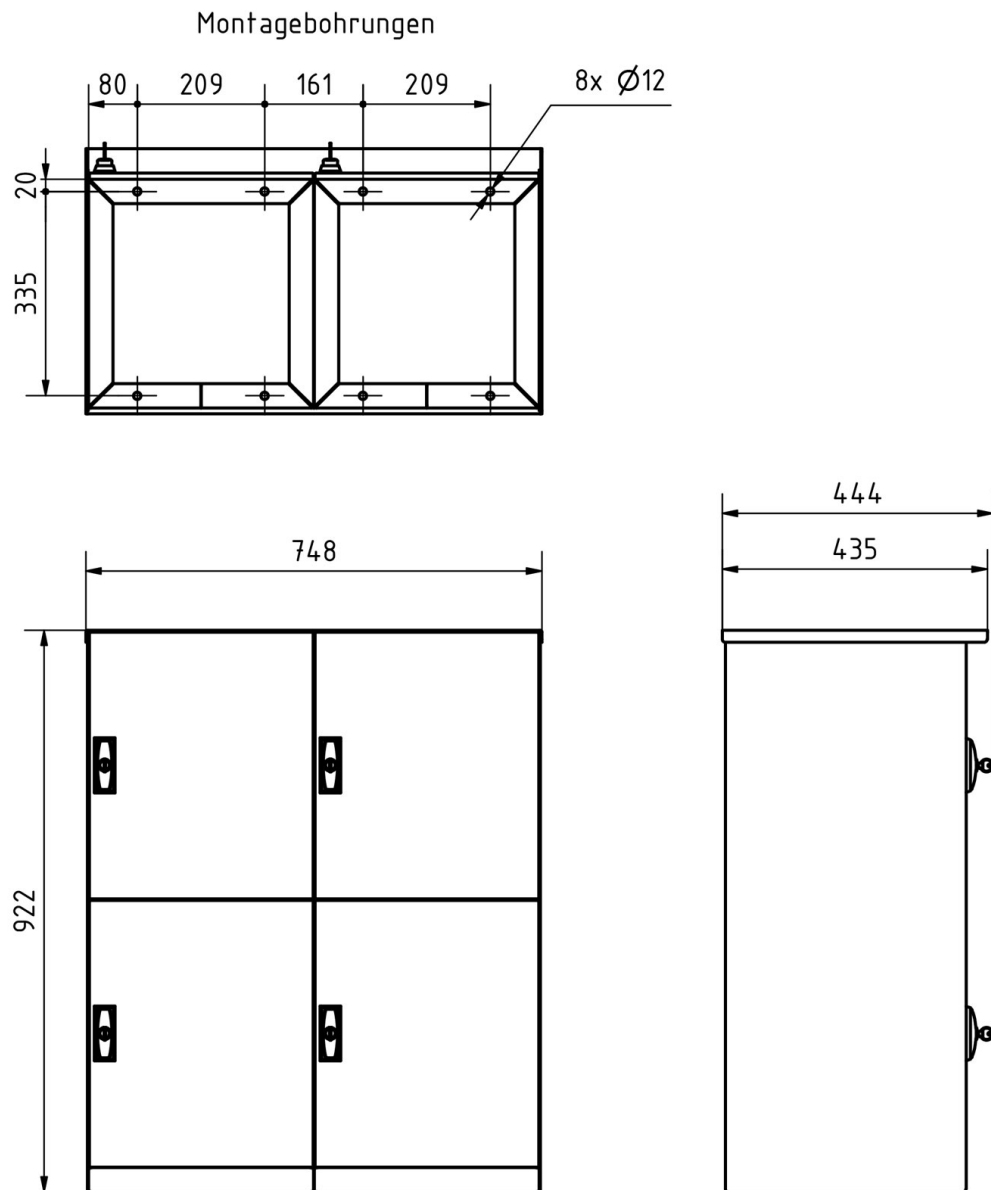
Product properties

Series	BASIC
Functions	Parcel compartment
Number of boxes	with 4 parcel boxes
Name labelling	Nameplate
Mounting type	Free-standing
Material	Stainless steel V2A 1.4301
Removal of mail	On the front
Boxes by volume	Jumbo > 30 litres
Surface/colour	Brushed

Dimensions

Height of single box in mm	440,0
Width of single box in mm	370,0
Capacity in litres	61,0
Overall height in mm	922,0
Total width in mm	754,0
Depth in mm	385.0 with rain roof 430.0
Weight in kg	50
Delivery condition	Supplied fully assembled

Drawing



More images



