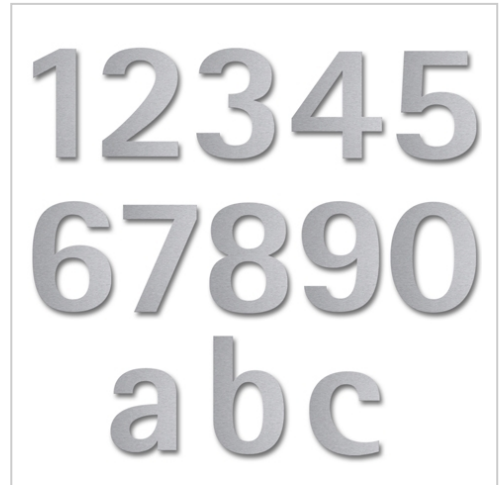


Stainless steel house number Klopstock | A (capital letter) | 450mm | Stainless steel, ground

Product number 528-450-VA-16



Product description

Stainless steel house number Klopstock 450mm

Choosing the right font is crucial for a house number. Optimum legibility is the top priority. However, the house number is also an important design element. There are two 30mm long welding studs with threads on the back. After drilling the holes and inserting the plugs, all you need to do is attach the numbers/letters.

Made in Germany, manufactured in Bad Salzuflen

- House number made of brushed stainless steel V2A 1.4301.
- Attachment to the wall is via welding studs, which are simply inserted into the dowel holes.
- Number height 45 cm.
- Material thickness 2 mm.
- Supplied with dowels (S6).

Product properties

Mounting type Plug-in bolt

Material Stainless steel V2A 1.4301

Surface/colour Brushed

Dimensions

Height in mm max. 451

Depth in mm 2,0

Weight in kg 0,5

More images

