

Design flush-mounted letterbox GRIMM - polished stainless steel | Stainless steel, ground | Flush-mounted

Product number 562-UP-1-VA



Product description

Design letterbox GRIMM® - A masterpiece of letterbox manufacturing

The GRIMM® designer letterbox is the perfect eye-catcher for any entrance area. With clear lines and a no-frills design, this letterbox is impressive across the board. Developed with over 21 years of experience in letterbox construction, the GRIMM® combines the best of our DESIGNER and GOETHE® collections. The flush-mounted look of the DESIGNER letterbox meets state-of-the-art locking technology and optimum weather protection, as found in the GOETHE® collection.

The GRIMM® letterbox is not only a visual highlight, but also at the forefront in terms of functionality and quality. Made by Briefkasten Manufaktur, it stands for maximum value and reliability. Thanks to the innovative push-key lock, the letterbox can be closed easily and conveniently - even without the use of a key. The lock is optimally protected against the weather.

The letterbox also offers an intelligent removal system: the door opens from top to bottom, ensuring that the mail remains securely in the box and cannot fall out. It can also be conveniently inserted from the front, with high-quality axle dampers ensuring that the flap closes gently. Thanks to the DIN/EN 13724 standard, the GRIMM is ideal for large letters in C4 format, which can be inserted without creasing. The GRIMM® letterbox impresses with its durable quality, timeless design and sophisticated functionality. The GRIMM® letterbox combines sophisticated design with modern technology and creates a stylish and functional entrance area. Opt for durability and top quality - with a letterbox that blends in perfectly with your architecture while offering optimum protection for your mail.

- High-quality letterbox made entirely of stainless steel for flush mounting.
- Front panel made of 2 mm stainless steel V2A 1.4301, polished.
- Quality production - Made in Germany by Briefkasten Manufaktur Lippe.
- Innovative push-key lock including 2 keys with key number, convenient locking without key, optimally protected from the weather.
- The removal door with opening limiter opens from top to bottom to prevent mail from falling towards you.
- Front mail slot with high-quality axle dampers for very quiet mail insertion.
- DIN/EN 13724-compliant letterbox, insertion size (3.5 cm x 32.5 cm) for C4 landscape - even large letters remain intact. Additional stainless steel removal protection integrated.
- Optimum weather protection thanks to offset cover.
- Optional name labelling approx. 15-20 mm high.
- Optional house number lettering approx. 70-80mm high.
- Double box system: Ideal for flush-mounted installation. The cover can be easily installed once the construction work is complete.
- Plaster box made of stainless steel 1.4016 (rustproof, magnetic stainless steel) with pre-punched cable inlets on all sides.

Important information:

To achieve optimum water protection for your mail, the letterbox or letterbox system should be located under a canopy if possible.

The mail is only protected from water if it is completely placed in the box and the flap is closed. Mail that is not fully inserted allows moisture and dirt to enter the letterbox. This system is protected against the ingress of water in accordance with DIN EN 13724. Water ingress is not a reason for complaint.

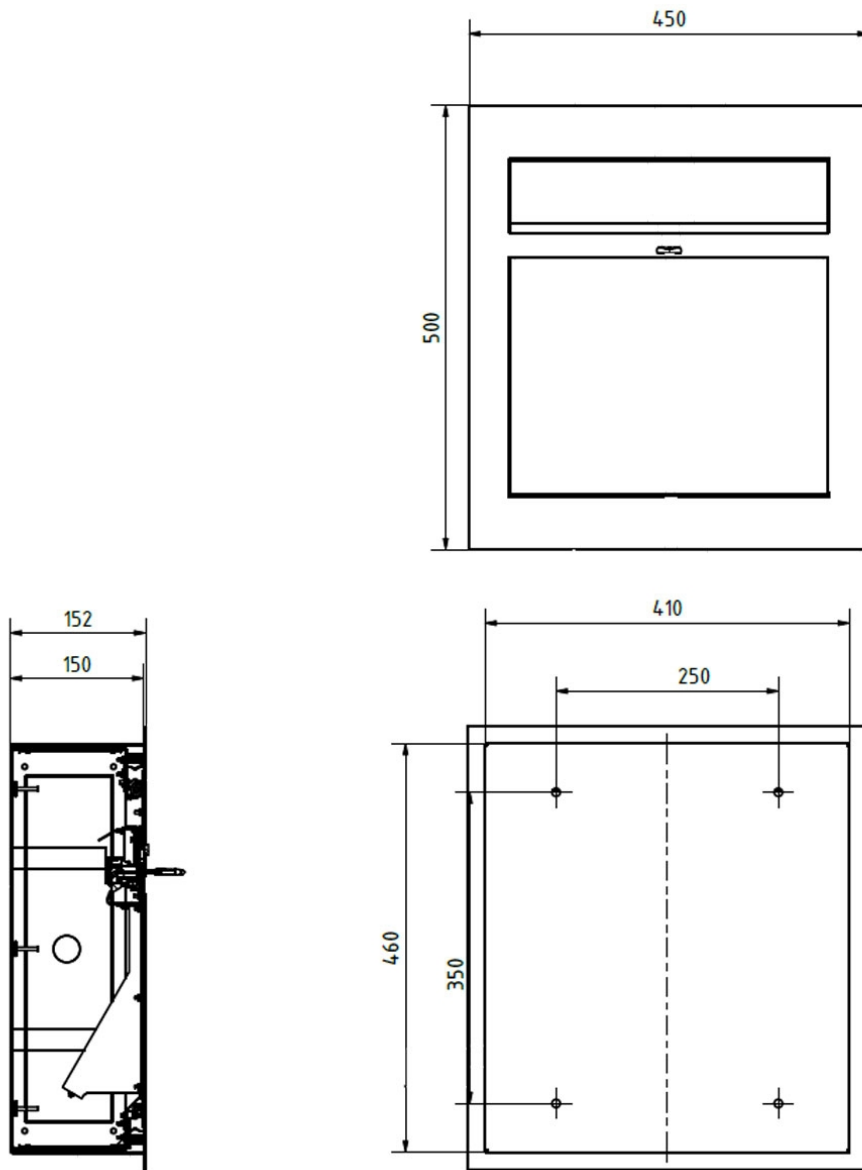
Product properties

| | |
|------------------------------|---|
| Series | GRIMM |
| Material | Stainless steel V2A 1.4301, Stainless steel 1.4016 (non-rusting magnetic stainless steel) |
| House number | House number as laser engraving |
| Name labelling | Laser-engraved |
| Removal of mail | On the front |
| Number of letterboxes | with 1 letterbox |
| Surface/colour | Brushed, RAL 9007 grey aluminium |
| Boxes by volume | Large > 16 litres |
| Mounting type | Flush-mounted |

Dimensions

| | |
|--|---|
| Height of single box in mm | 460,0 |
| Width of single box in mm | 410,0 |
| Capacity in litres | 26,0 |
| Height of letterbox slot in mm | 35,0 |
| Width of letter slot in mm | 325,0 |
| Height of letterbox in mm | External dimension 500.0 installation dimension 460.0 |
| Width of letterbox system in mm | External dimension 450.0 installation dimension 410.0 |
| Depth in mm | 150,0 |
| Weight in kg | 16 |
| Delivery condition | Delivery is assembled |

Drawing



More images

