

# Stainless steel free-standing letterbox Designer BIG ST-R - Backlit house number - RAL of your choice - INDIVIDUAL

Product number 325B-VAR-HL-B



## Product description

### Stainless steel free-standing letterbox Designer BIG ST-R - backlit house number - RAL of your choice - INDIVIDUAL

High-quality, free-standing letterbox from Briefkasten Manufaktur with extra large volume (21 litres) & extra large slot (8cm x 35cm). With the front panel powder-coated in a modern RAL colour and the harmonious stainless steel combination, this free-standing letterbox is an absolute eye-catcher among letterboxes. The front panel is equipped with a backlit LED house number, which is always clearly visible at night. The letterbox is made of 2 mm stainless steel V2A 1.4301, polished and can be replaced with a new letterbox module even after many years. Clear lines and no-frills design characterise the designer free-standing letterbox. No rivets or screws are visible. Our products have a high quality, reliable functionality and their own identity. Made by Briefkasten Manufaktur.

- Standing letterbox made of 2mm stainless steel V2A 1.4301, 240 grain polished, the front plate is powder-coated in RAL colour. Front panel dimensions: height 750 mm; width: 450 mm; depth 100 mm.
- Very high quality craftsmanship!
- Front mail removal door 350 mm x 300 mm, opens from top to bottom. Incl. 2 keys with key number.
- Mail slot from the front, dimensions: W 35 cm x H 6.3 cm, C4 landscape. Very large letters fit in here without creasing.
- **Now with built-in damping elements that allow the flap to close slowly and quietly.**
- House number approx. 70mm high (max. 3 digits) with energy-saving LED lighting 12V DC approx. 50mA / 1W, white.
- Choice of replaceable stainless steel nameplate with laser inscription or Plexi nameplate.
- 8-12V DC short-stroke bell push with LED ring lighting (blue, white, red or green). The bell button lighting cannot be supplied via the control unit. It must be connected to an additional 8-12 V DC power supply.
- An 8-12 V DC short-stroke light button with pictogram is available as an option.
- Preparation (built-in loudspeaker not included) for intercom system possible.
- Optionally with universal adapter for all commercially available built-in loudspeakers.
- Optional preparation (camera not included in scope of delivery) for a camera.
- Incl. EVN LED power supply unit / transformer IP65 12V/DC 0.1-4W for LED lighting (house number, bell button and nameplate if selected).
- The pedestals are made of 60.3 mm stainless steel V2A 1.4301, polished. Invisible cable routing through the pillars.

## Important information

Camera or call station preparation

**We recommend that the electrical installation is always carried out by an electrician.**

We offer the preparation of cameras and intercoms from various manufacturers for our letterboxes. The preparation does not include any end devices, but only the provision of screw mounts, drill holes and perforations. So that you can mount your end device without any problems.

## Water protection

To achieve optimum water protection for your mail, the letterbox or letterbox system should be located under a canopy if possible. If you install this system completely free-standing, we recommend using a rain canopy. Tight-fitting self-adhesive rain cover enclosed.

The mail is only protected from water if it is fully inserted in the box and the flap is closed. Mail that is not fully inserted allows moisture and dirt to penetrate the letterbox. It is therefore necessary to plan sufficiently dimensioned letterboxes for the upcoming requirements. Under certain extreme weather conditions, water can still enter (up to 1ccm according to DIN EN 13724). This is not a reason for complaint.

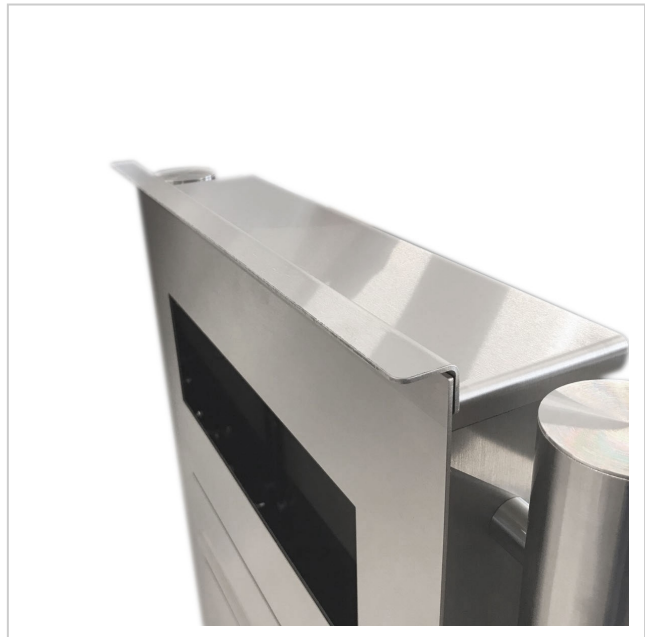
## Product properties

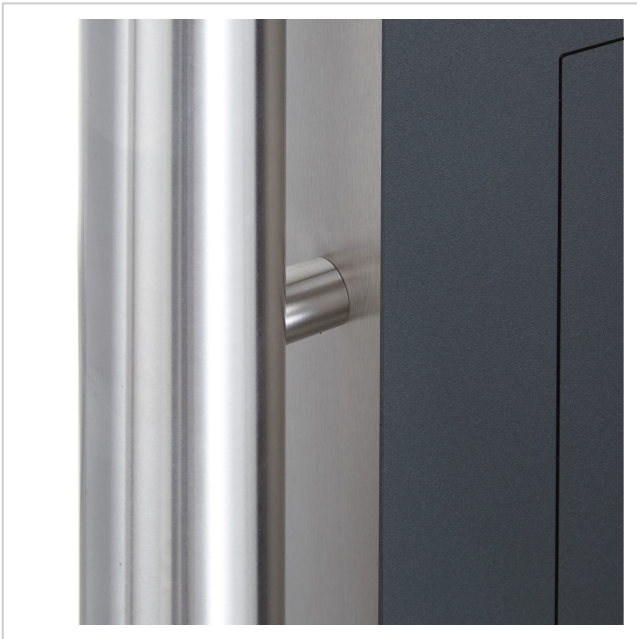
|   |   |
|---|---|
| <b>Surface/colour</b>                           | RAL 9005 deep black, RAL 3004 crimson red, DB 703 iron mica, RAL 7016 anthracite grey, RAL of your choice (according to colour table), Brushed, RAL 9007 grey aluminium, RAL 9016 traffic white |
| <b>Series</b>                                   | DESIGNER  |
| <b>Number of bell push buttons</b>              | 1 button  |
| <b>Functions</b>                                | Newspaper compartment   |
| <b>Functional box prepared for manufacturer</b> | LOXONE, GIRA, 2N, Busch Jaeger, Siedle, DoorBird, STR Elektronik, ELCOM, TCS, Ritto, ALGO, Telegärtner, Auerswald, Legrand Bticino, HHG, HIKVISION, PCS, Sesam, ekey                            |
| <b>Name labelling</b>                           | Laser-cut engraving, Nameplate, Laser-engraved, Illuminated laser-cut engraving   |
| <b>Mounting type</b>                            | Free-standing   |
| <b>Material</b>                                 | Stainless steel V2A 1.4301  |
| <b>House number</b>                             | House number as laser cut, illuminated  |
| <b>Removal of mail</b>                          | On the front  |
| <b>Number of boxes</b>                          | with 1 letterbox  |
| <b>Boxes by volume</b>                          | Large > 16 litres   |

## Dimensions

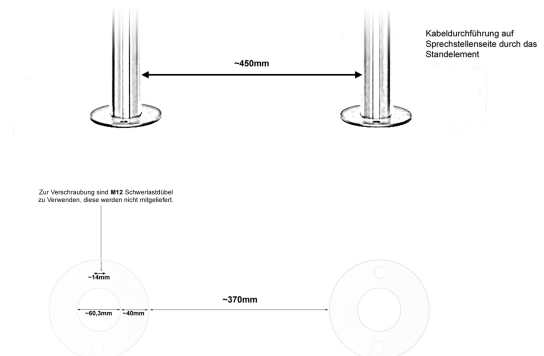
|                                       |  |
|---------------------------------------|--|
| <b>Height of single box in mm</b>     | 710,0   750,0  |
| <b>Width of single box in mm</b>      | 410,0   450,0  |
| <b>Capacity in litres</b>             | 21   |
| <b>Height of letterbox slot in mm</b> | 63,0   |
| <b>Width of letter slot in mm</b>     | 350,0  |
| <b>Overall height in mm</b>           | 1200,0   1500,0  |
| <b>Total width in mm</b>              | 570,0  |
| <b>Depth in mm</b>                    | 100,0  |
| <b>Weight in kg</b>                   | 35   |
| <b>Delivery condition</b>             | Supplied in blocks, stand elements / letterbox divided |

## More images





Alle Angaben unter Vorbehalt von technischen Änderungen in mm. Maßtoleranzen möglich +/- 2mm.



#### Regendach "DESIGNER"

Für Aufputz-, Zaun- und Standbriefkästen der Kollektion Designer liegt ein Regendach bei. Dieses ist selbstklebend und nach erfolgreicher Montage oben auf dem Briefkasten aufzusetzen. Achten Sie dabei auf eine genaue Ausrichtung!



