

BASIC 810 W letterbox for side wall mounting with newspaper compartment - RAL 9016 traffic white | RAL 9016 traffic white fine structure matt | with newspaper compartment | 100mm depth

Product number 810-1-W-ZF-9016



Product description

BASIC 810 W letterbox for side wall mounting with newspaper compartment - RAL 9016 traffic white

This letterbox combines the highest quality and modern design. The letter box is made of galvanised steel, powder-coated in RAL 9016 traffic white fine structure, matt. Extremely high-quality workmanship and the well thought-out concept make this free-standing letter box our top seller. A rain drainage edge for optimum water protection, a continuous rubber lip for quiet insertion and the very robust interchangeable nameplate characterise this letterbox.

Thanks to the design, self-assembly is straightforward.

The letterbox is manufactured by Briefkasten Manufaktur. 100% Made in Germany, Bad Salzufen.

- Letterbox made of galvanised steel, powder-coated in RAL 9016 traffic white fine structure matt.
- Newspaper compartment made of stainless steel V2A 1.4301, powder-coated in RAL 9016 traffic white fine structure matt. Open on both sides.
- The removal doors can be opened from left to right with rain drainage edge for optimum water protection.
- Insertion flap with sound-absorbing rubber seal for very quiet mail insertion.
- With interchangeable nameplate and 2 keys.
- The letterbox complies with DIN EN 13724. Insertion size (3.5 cm x 32.5 cm) for DIN C4 landscape, even large letters fit in here without creasing.
- Incl. rain cover made of stainless steel V2A 1.4301, powder-coated in RAL 9016 traffic white fine structure matt.
- The mounting pillars are made of 42.4 mm stainless steel V2A 1.4301, polished for screw mounting on the house wall.

Important information:

The post is only protected against moisture and dirt when it is fully inserted and the flap is closed. Under certain extreme weather conditions, water can still enter (up to 1cm according to DIN EN 13724). This is not a reason for complaint.

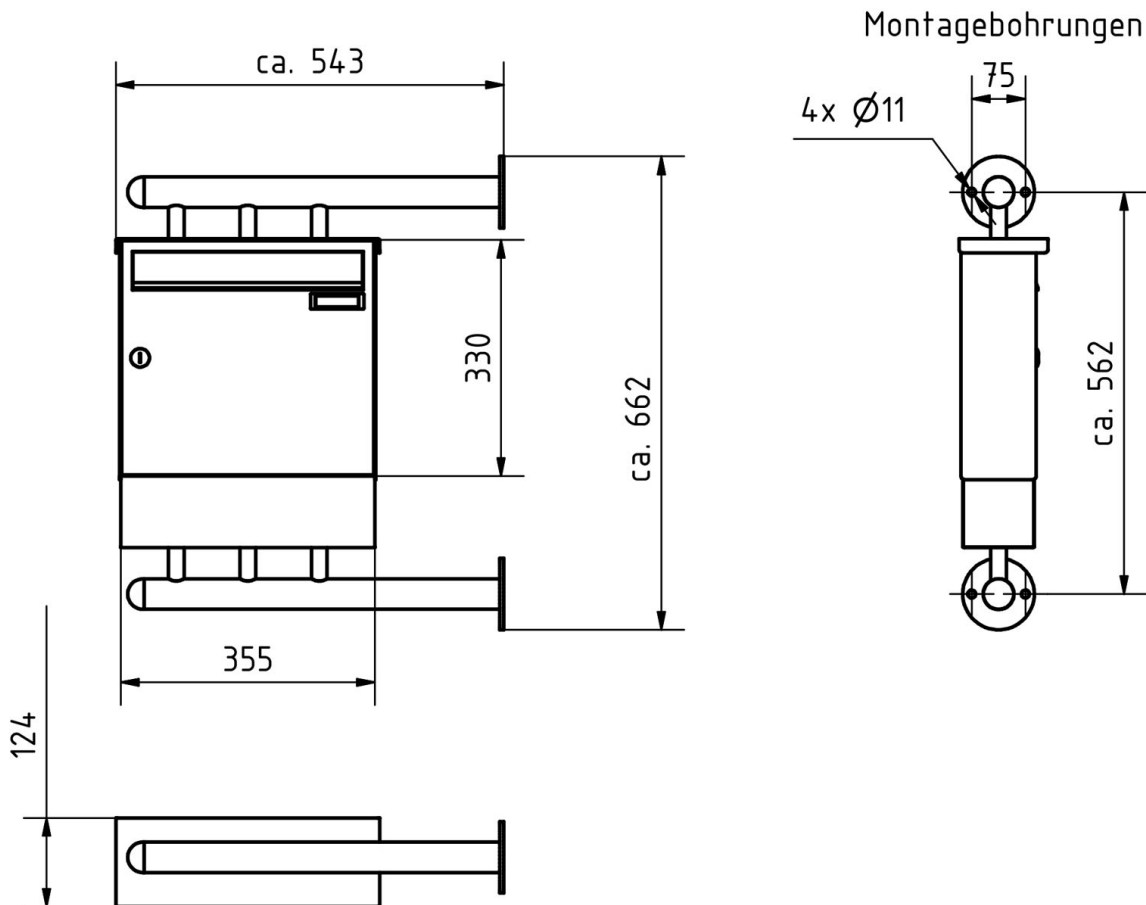
Product properties

Material	Steel, galvanised, Stainless steel V2A 1.4301
Series	BASIC
Functions	Newspaper compartment
Boxes by volume	Normal > 10 litres
Name labelling	Nameplate
House number	House number as laser engraving
Removal of mail	On the front
Number of letterboxes	with 1 letterbox
Mounting type	Surface-mounted
Surface/colour	RAL 9016 traffic white

Dimensions

Height of single box in mm	330,0
Width of single box in mm	355,0
Capacity in litres	12,0 17,0
Height of letterbox slot in mm	35,0
Width of letter slot in mm	325,0
Height of letterbox in mm	430,0
Width of letterbox system in mm	355,0
Depth in mm	100,0 150,0
Weight in kg	12

Drawing



More images

