

Design flush-mounted letterbox GRIMM - Colour of your choice - GIRA System 106 - Video intercom right - VIDEO complete set | Right | Gira System 106 complete set video | ? Colour of your choice | Flush-mounted

Product number 562-UP-SPR-1-SF-GI106KS



Product description

Design letterbox GRIMM® - A masterpiece of the letterbox manufactory

The GRIMM flush-mounted designer letterbox combines modern design with first-class workmanship - ideal for discerning building owners and architects who are looking for an elegant solution for integrating the Gira System 106. Manufactured from high-quality stainless steel and completely "Made in Germany" by the letterbox manufacturer Lippe, this model stands for durability, functionality and a stylish look. The powder-coated front panel made of 2 mm stainless steel V2A (1.4301) in the colour of your choice impresses with its timeless appearance and high corrosion resistance. The flush-mounted design enables seamless integration of up to three GIRA 106 system modules via a sophisticated mounting system. 3 GIRA system modules are included, so the letterbox can be used directly. The matching GIRA home station and the control unit to complete this letterbox are included. The modules can be replaced at any time thanks to the simple mounting system.

The GRIMM® letterbox is not only a visual highlight, but also at the forefront in terms of functionality and quality. Thanks to the innovative push-key lock, the letterbox can be operated easily and conveniently with one hand. Open the door with one push and close the door without using a key. The lock is optimally protected from the weather. The letterbox also features an intelligent removal system: the door opens from top to bottom, ensuring that the mail remains securely in the box and cannot fall towards you. Mail is also conveniently inserted from the front, with high-quality axle dampers ensuring that the flap closes gently. The GRIMM is particularly unique thanks to its double box system: the flush-mounted box can be installed during the shell construction phase, while the front panel is only fitted once the construction work has been completed - for maximum flexibility in the future and protection from dirt and dust during the construction phase. The plaster box is made of stainless steel and has pre-punched cable inlets on all sides to allow easy electrical installation.

Thanks to the DIN/EN 13724 standard, the GRIMM is ideal for large letters in C4 format, which can be inserted without creasing. The GRIMM® letterbox impresses with its durable quality, timeless design and sophisticated functionality.

- High-quality letterbox made entirely of stainless steel for flush mounting.
- Front panel made of 2 mm stainless steel V2A 1.4301, powder-coated.
- Quality production - Made in Germany by Briefkasten Manufaktur Lippe.
- Incl. GIRA home station & control unit enclosed, System 106 door station module, info module & camera module installed.
- Innovative push-key lock including 2 keys with key number, convenient locking without key, optimally protected from the weather.
- The removal door with opening limiter opens from top to bottom to prevent mail from falling towards you.
- Front mail slot with high-quality axle dampers for very quiet mail insertion.
- DIN/EN 13724-compliant letterbox, insertion size (3.5 cm x 32.5 cm) for C4 landscape - even large letters remain intact. Additional stainless steel removal protection integrated.
- Optimum weather protection thanks to offset cover.
- Double box system: Ideal for flush mounting. The cover can be easily installed once the construction work is complete.
- Flush-mounted box made of stainless steel 1.4016 (stainless, magnetic stainless steel) with pre-punched cable inlets on all sides.

GIRA not found or type unknown

Camera module Gira System 106 - 5561 000

- A high-quality camera with high light sensitivity is concealed behind the replaceable black glass pane. Thanks to a detection angle of 100°, the user is always in the picture of what is happening outside his front door.

Info module Gira System 106 - 5560 920

- For house numbers that need to be clearly visible.

Door station module Gira System 106 - 5565 920

- Compact voice module with integrated call button for communication between inside and outside.
- A high-quality microphone and a weatherproof loudspeaker ensure good communication.
- Power supply via 2-wire bus. Additional connection for ZV (e.g. necessary from 3rd camera module).
- All other System 106 modules (except voice module) are supplied with power via the door station module.

Surface-mounted home station Gira Video 7 1209xx

- Video home station with a 17.78 cm (7") TFT colour display and convenient hands-free function for surface mounting or wall mounting with flush-mounted device box or cavity wall box. Also suitable for placement on furniture with the optional stand (see accessories). A 32 GB SD memory card is included for internal image storage. Full-surface glass front with touch functionality and tactile feedback.

Video REG control device Gira 128800

- Control device for supplying the audio and video components of the Gira door communication bus.
- Supply of the reverse-polarity protected and short-circuit-proof 2-wire bus when using video components such as colour camera, TFT colour display.
- Up to 2 door stations with colour camera and 28 home stations with TFT colour display can be supplied via the video control device.
- A total of up to 15 colour cameras can be controlled by the video control device (5 video door stations and 10 DCS camera gateways), of which two door stations with colour camera can be supplied with power by the video control device. The other colour cameras must each be operated with their own power supply for door communication.
- Self-resetting electronic short-circuit and overload detection of the operating voltages and the bus connection.
- Buttons for system and door release programming.
- LED status indicators for operation, overload, system programming and door opener programming.
- AC 12 V output for supplying power to a standard electric strike.
- Relay output for switching an electric strike with its own power supply.
- Door opener switching time continuously adjustable from 1 to 10 s.

Important information:

To achieve optimum water protection for your mail, the letterbox or letterbox system should be located under a canopy if possible.

The mail is only protected from water if it is completely placed in the box and the flap is closed. Mail that is not fully inserted allows moisture and dirt to enter the letterbox. This system is protected against the ingress of water in accordance with DIN EN 13724. Water ingress is not a reason for complaint.

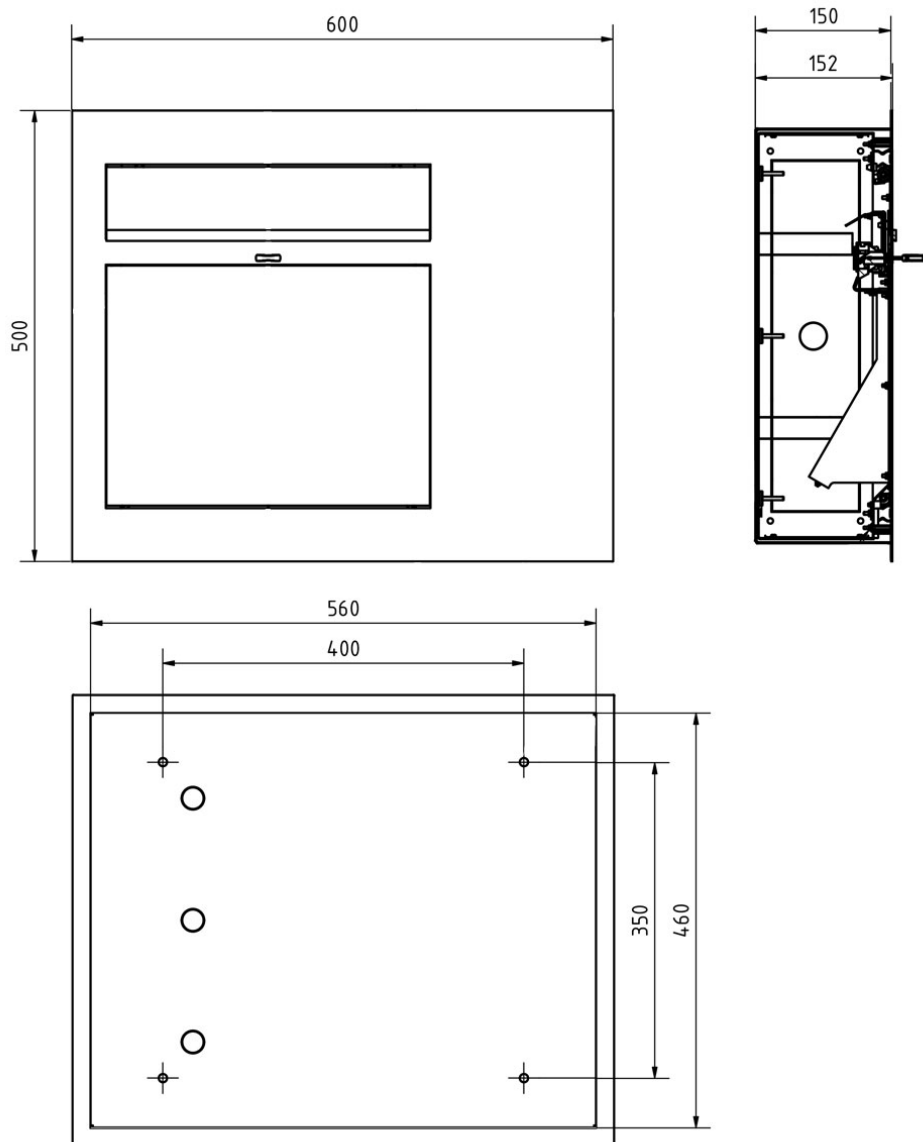
Product properties

Surface/colour	RAL 9005 deep black, RAL 3004 crimson red, DB 703 iron mica, RAL 7016 anthracite grey, RAL of your choice (according to colour table), RAL 9007 grey aluminium, RAL 9016 traffic white
Series	GRIMM
Connection technology	2-wire
Number of bell push buttons	1 button
Functions	Camera, Intercom
Functional box prepared for manufacturer	GIRA
Material	Stainless steel V2A 1.4301, Stainless steel 1.4016 (non-rusting magnetic stainless steel)
House number	House number as laser engraving
Name labelling	Laser-engraved
Removal of mail	On the front
Number of boxes	with 1 letterbox
Boxes by volume	Large > 16 litres
Mounting type	Flush-mounted

Dimensions

Height of single box in mm	460,0
Width of single box in mm	560,0
Capacity in litres	26,0
Height of letterbox slot in mm	35,0
Width of letter slot in mm	325,0
Height of letterbox in mm	External dimension 500.0 installation dimension 460.0
Width of letterbox system in mm	External dimension 600.0 installation dimension 560.0
Depth in mm	150,0
Weight in kg	19
Delivery condition	Delivery is assembled

Drawing



More images



