

# BASIC 810 W letterbox with newspaper compartment, for side wall mounting - RAL 7016 anthracite grey | RAL 7016 anthracite grey, fine structure, matt | with newspaper compartment | 100mm depth

**Product number** 810-1-W-ZF-7016



## Product description

### BASIC 810-W letterbox with newspaper compartment - RAL 7016 anthracite grey / stainless steel - wall-mounted, on the side

This letter box combines the highest quality and modern design. The letterbox is made of galvanised steel, powder-coated in anthracite grey RAL 7016 fine structure, matt. Extremely high-quality workmanship and the well thought-out concept make this free-standing letterbox our top seller. A rain drainage edge for optimum water protection, a continuous rubber lip for quiet insertion and the very robust interchangeable nameplate characterise this letterbox.

Thanks to the design, self-assembly is straightforward.

The letterbox is manufactured by Briefkasten Manufaktur. 100% Made in Germany, Bad Salzufen.

- Letterbox made of galvanised steel, powder-coated in RAL 7016 anthracite grey fine structure matt.
- Newspaper compartment made of stainless steel V2A 1.4301, powder-coated in RAL 7016 anthracite grey fine structure matt. Open on both sides.
- The removal doors can be opened from left to right with rain drainage edge for optimum water protection.
- Insertion flap with sound-absorbing rubber seal for very quiet mail insertion.
- With interchangeable nameplate and 2 keys.
- The letterbox complies with DIN EN 13724. Insertion size (5.5 cm x 34.0 cm) for DIN C4 landscape, even large letters fit in here without creasing.
- Incl. rain cover made of stainless steel V2A 1.4301, powder-coated in RAL 7016 anthracite grey fine structure matt.
- The mounting pillars are made of 42.4 mm stainless steel V2A 1.4301, polished for screw mounting on the house wall.

#### Important information:

The post is only protected against moisture and dirt when it is fully inserted and the flap is closed. Under certain extreme weather conditions, water can still enter (up to 1cm according to DIN EN 13724). This is not a reason for complaint.

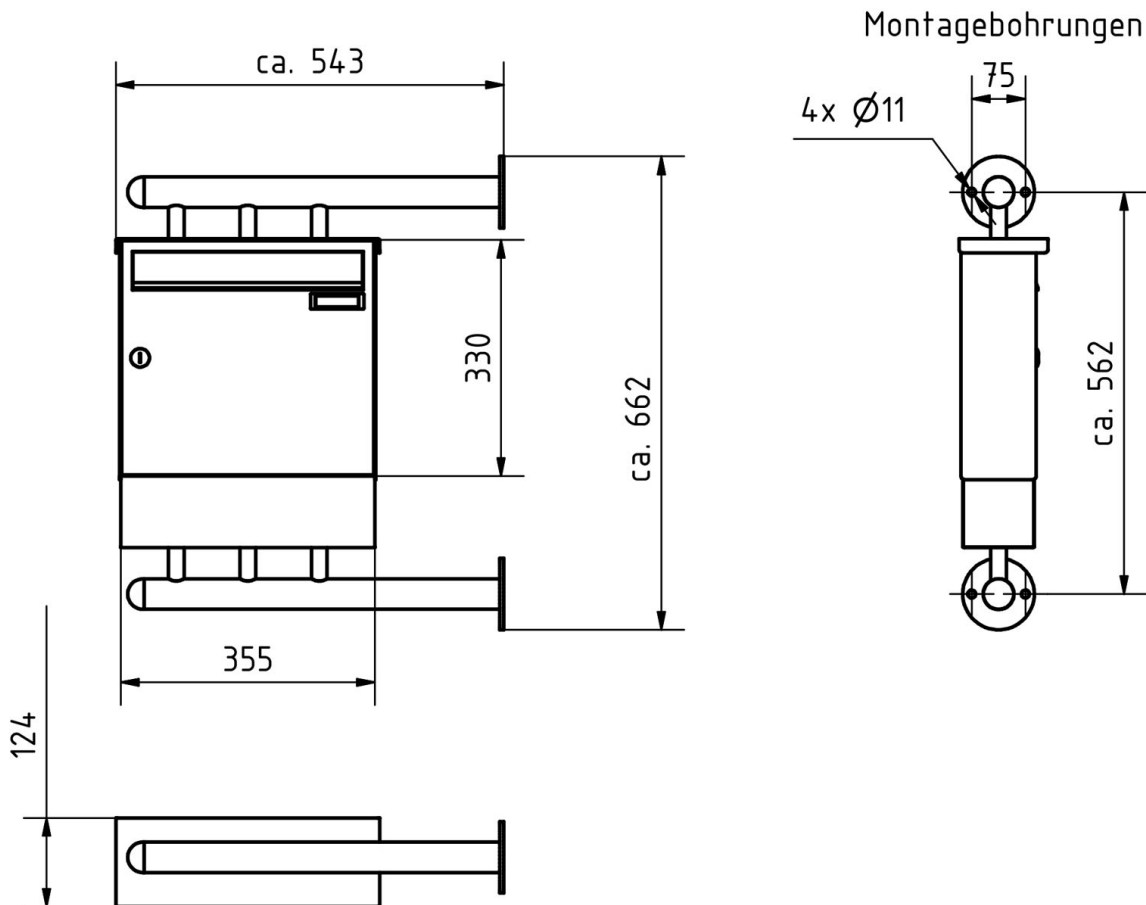
## Product properties

<b>Material</b>	Steel, galvanised, Stainless steel V2A 1.4301
<b>Series</b>	BASIC
<b>Functions</b>	Newspaper compartment
<b>Boxes by volume</b>	Normal > 10 litres
<b>Name labelling</b>	Nameplate
<b>House number</b>	House number as laser engraving
<b>Surface/colour</b>	RAL 7016 anthracite grey
<b>Removal of mail</b>	On the front
<b>Number of boxes</b>	with 1 letterbox
<b>Mounting type</b>	Surface-mounted

## Dimensions

<b>Height of single box in mm</b>	330,0
<b>Width of single box in mm</b>	355,0
<b>Capacity in litres</b>	12,0   17,0
<b>Height of letterbox slot in mm</b>	35,0
<b>Width of letter slot in mm</b>	325,0
<b>Height of letterbox in mm</b>	430,0
<b>Width of letterbox system in mm</b>	355,0
<b>Depth in mm</b>	100,0   150,0
<b>Weight in kg</b>	12

## Drawing



## More images



